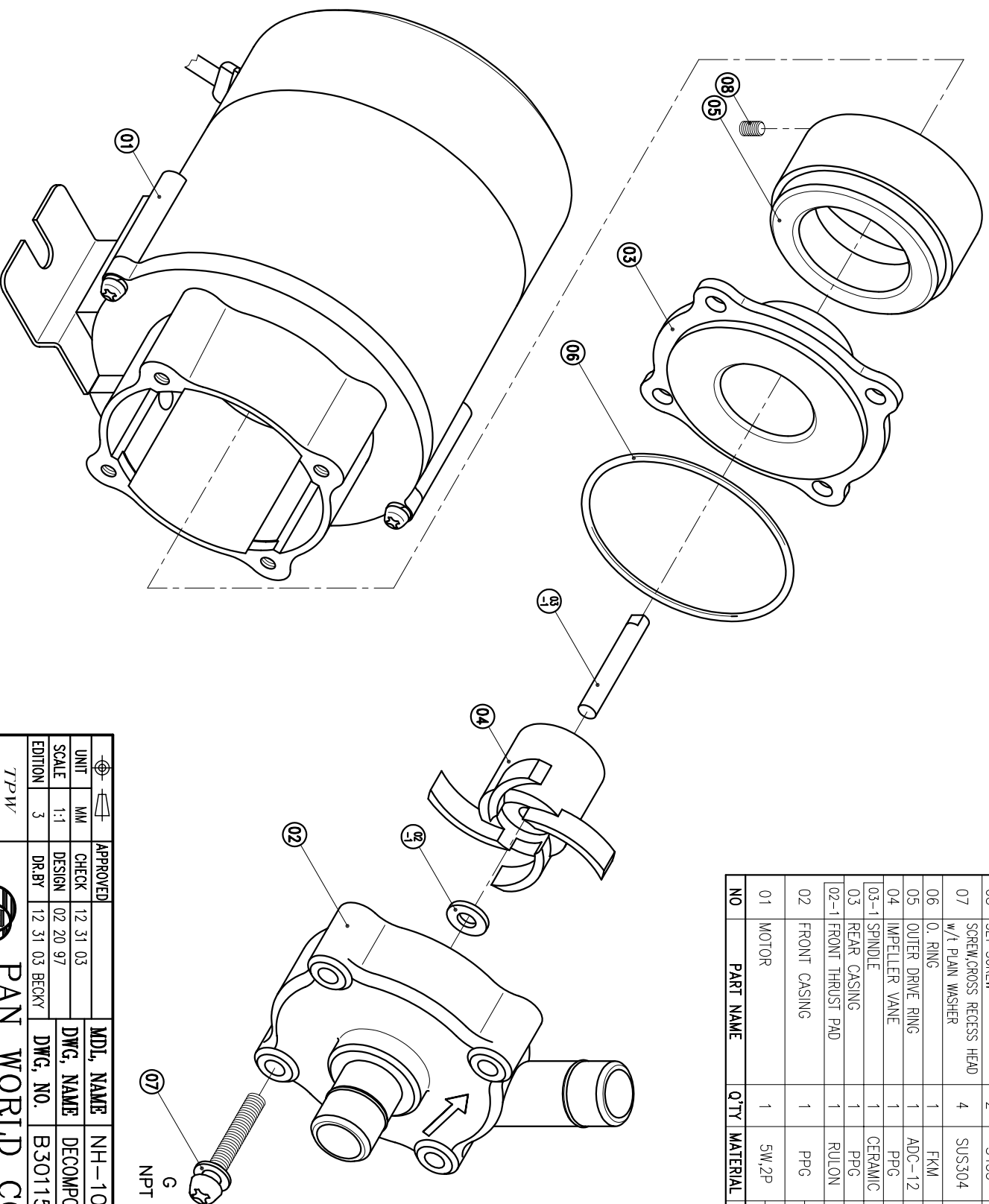


NO	PART NAME	Q'TY	MATERIAL	NOTE	PART NO.
08	SET SCREW	2	S435	M3X4	
07	SCREW,CROSS RECESS HEAD w/L PLAIN WASHER	4	SUS304	M4X25	
06	O. RING	1	FKM	S45	1001112311
05	OUTER DRIVE RING	1	ADC-12	φ41X26	
04	IMPELLER VANE	1	PPG	φ40X22.5	1001112304
03-1	SPINDLE	1	CERAMIC	φ4X27	1001212306
03	REAR CASING	1	PPG	φ54X20.5	1001212305
02-1	FRONT THRUST PAD	1	RULON	φ9X1.2	
02	FRONT CASING	1	PPG	HOSE 100~120V 1011112300	1001112310
01	MOTOR	1	SW.2P	100~120V 200~240V 1001212317	1011112300 1001212317



G : 1/2"X 1/2"
NPT : 1/2"X 1/2"

APPROVED	CHECK	MDL. NAME	NH-10PX
12 31 03	12 31 03	DWG. NAME	DECOMPOSITION DRAWING
02 20 97	02 20 97	DWG. NO.	B3011563
03	03	DR.BY	BECKY
			A3

TPW
HONG YUAN



PAN WORLD CO., LTD.
パンワールド株式会社