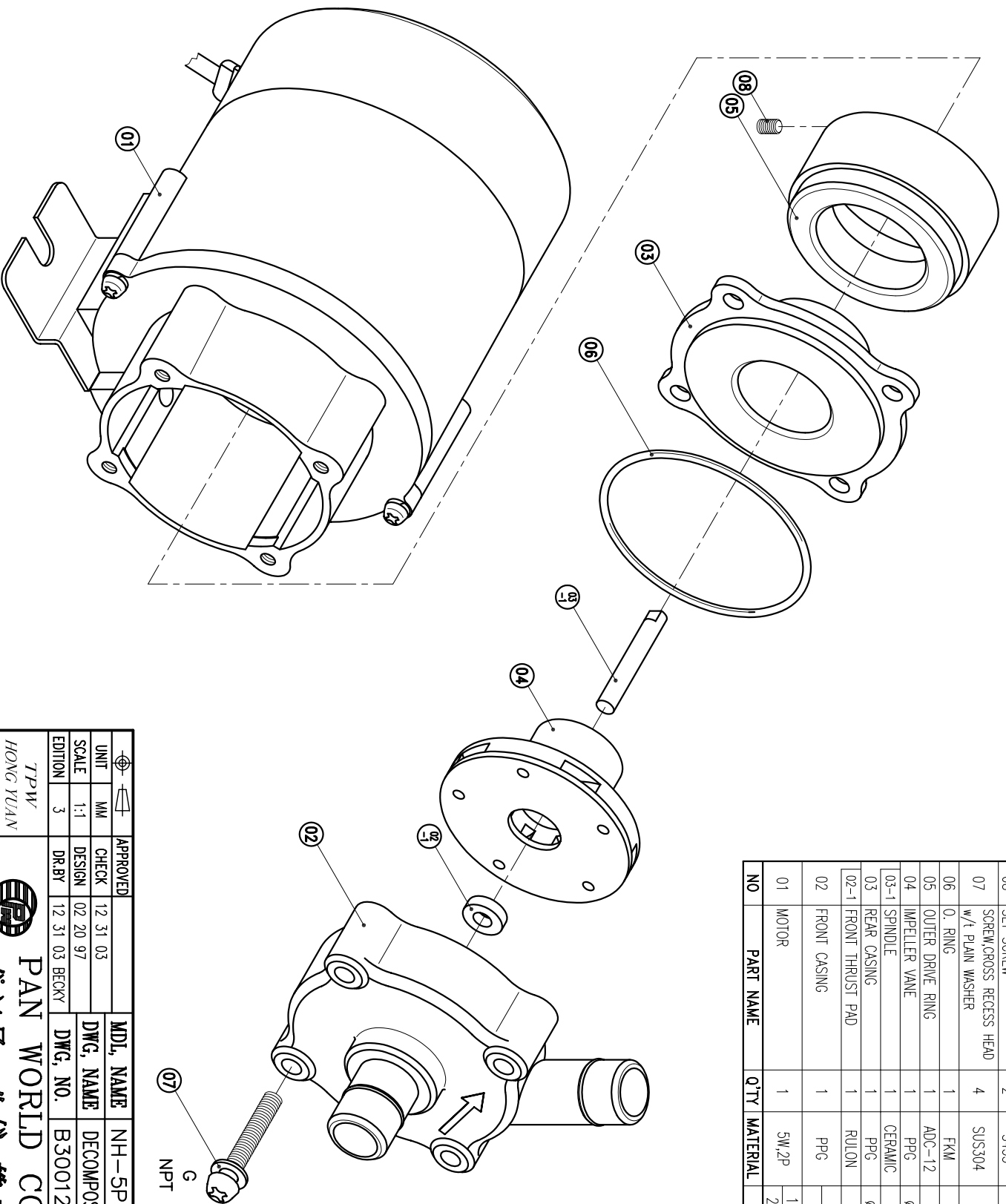


| | | | | | |
|------|---|---|---------|----------------------|--------------------------|
| 08 | SET SCREW | 2 | S435 | M3X4 | |
| 07 | SCREW,GROSS RECESS HEAD W/1 PLAIN WASHER | 4 | SUS304 | M4X25 | |
| 06 | O. RING | 1 | FKM | S45 | 1001112311 |
| 05 | OUTER DRIVE RING | 1 | ADC-12 | φ41X26 | 1001112305 |
| 04 | IMPELLER VANE | 1 | PPG | φ43X22.5 | 1001112305 |
| 03-1 | SPINDLE | 1 | CERAMIC | φ4X27 | 1001212306 |
| 03 | REAR CASING | 1 | PPG | φ54X20.5 | 1001212305 |
| 02-1 | FRONT THRUST PAD | 1 | RULON | φ9X2.5 | |
| 02 | FRONT CASING | 1 | PPG | HOSE THREAD | 1001112310 1011112300 |
| 01 | MOTOR | 1 | 5W,2P | 100~120V 200~240V | 1011212317 1001212317 |



G : 1/2"X 1/2"
NPT : 1/2"X 1/2"

| | | |
|----------|-----------|-----------------------|
| APPROVED | MDL NAME | NH-5PX-Z |
| CHECK | DWG. NAME | DECOMPOSITION DRAWING |
| DESIGN | DWG. NO. | B3001215 |
| DR.BY | | A3 |
| EDITION | | |
| 3 | | |

TPW
HONG YUAN



PAN WORLD CO.,LTD.
パンワールド株式会社