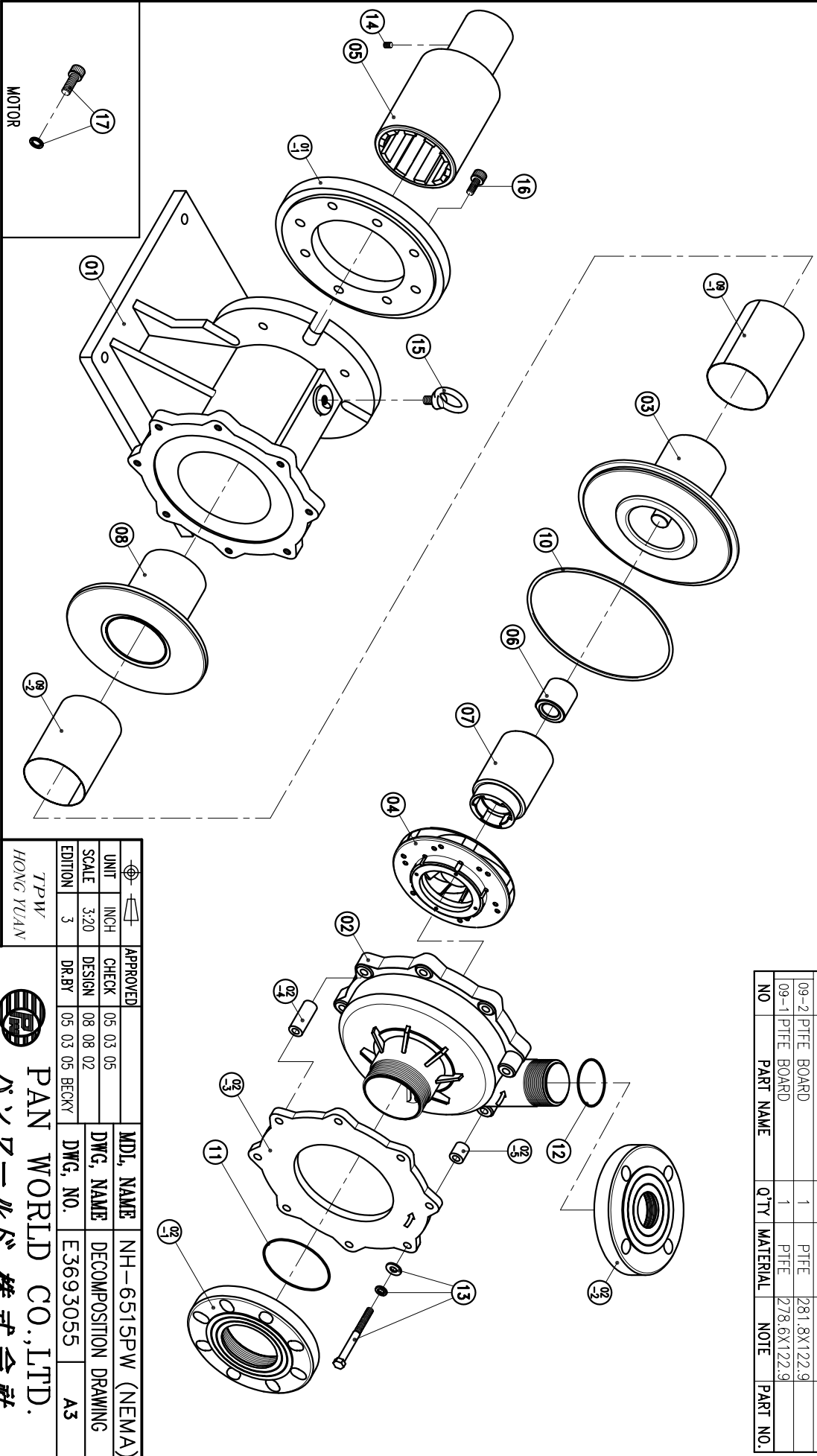


| | | | | | | | | | | | | | | | | |
|------|-------------------|---|--------|------------|--|----|-------------------------|---|---------|------------|------------|------|---------------------|---|--------|---------------|
| 02-5 | SLEEVE | 2 | SUS304 | φ20X21.5 | | 09 | PTFE BOARD | 2 | PTFE | LX122.9 | | 17 | HEXAGON SOCKET BOLT | 4 | SUS304 | 1/2"-13x 1/4" |
| 02-4 | SLEEVE | 6 | SUS304 | φ20X50 | | 08 | REAR CASING COVER ASS'Y | 1 | | φ210X137 | 1005210332 | 16 | HEXAGON SOCKET BOLT | 4 | SUS304 | M12X25 |
| 02-3 | RELIEF PLATE | 1 | FC-20 | φ261X12 | | 07 | INNER DRIVE RING | 1 | ETFE | φ79.6X124 | 1003210803 | 15 | EYEBOLT | 4 | SUS304 | M12X20 |
| 02-2 | FLANGE | 1 | PPG | 65A | | 06 | BEARING | 1 | CERAMIC | φ44X46.5 | 1003210801 | 14 | SET SCREW | 2 | S435 | M8X10 |
| 02-1 | FLANGE | 1 | PPG | 80A | | 05 | OUTER DRIVE RING | 1 | FCD-45 | φ122X245.1 | 100681800 | 13 | HEXAGON HEAD BOLT | 8 | SUS304 | M10X110 |
| 02 | FRONT CASING | 1 | PPG | φ261X148 | | 04 | IMPELLER ASS'Y | 1 | ETFE | | 1006817040 | 12 | w/t SPRING WASHER | 1 | | |
| 01-1 | TRANSITION FLANGE | 1 | FC-20 | φ254X21.6 | | 03 | REAR CASING | 1 | ETFE | φ240X141 | 1035210331 | 11 | w/t PLAIN WASHER | 1 | | |
| 01 | BRACKET | 1 | FC-20 | φ264X256.5 | | | | | | | | 10 | O. RING | 1 | FKM | G85 |
| | | | | | | | | | | | | 09-2 | PTFE BOARD | 1 | FKM | G220 |
| | | | | | | | | | | | | 09-1 | PTFE BOARD | 1 | PTFE | 281.8X122.9 |
| | | | | | | | | | | | | | | 1 | PTFE | 278.6X122.9 |

| NO | PART NAME | Q'TY | MATERIAL | NOTE | PART NO. |
|------|------------|------|----------|-------------|------------|
| 12 | O. RING | 1 | FKM | G55 | 1004711502 |
| 11 | O. RING | 1 | FKM | G85 | 1004711503 |
| 10 | O. RING | 1 | FKM | G220 | 1003012777 |
| 09-2 | PTFE BOARD | 1 | PTFE | 281.8X122.9 | |
| 09-1 | PTFE BOARD | 1 | PTFE | 278.6X122.9 | |



| APPROVED | CHECK | DESIGN | DR.BY | MDL. NAME | DWG. NAME | DWG. NO. | DECOMPOSITION | DRAWING |
|----------|----------|----------|-------|------------------|---------------|----------|---------------|---------|
| 05 03 05 | 08 08 02 | 05 03 05 | BECKY | NH-6515PW (NEMA) | DECOMPOSITION | E3693055 | | A3 |

TPW
HONG YUAN



PAN WORLD CO., LTD.
パンワールド株式会社