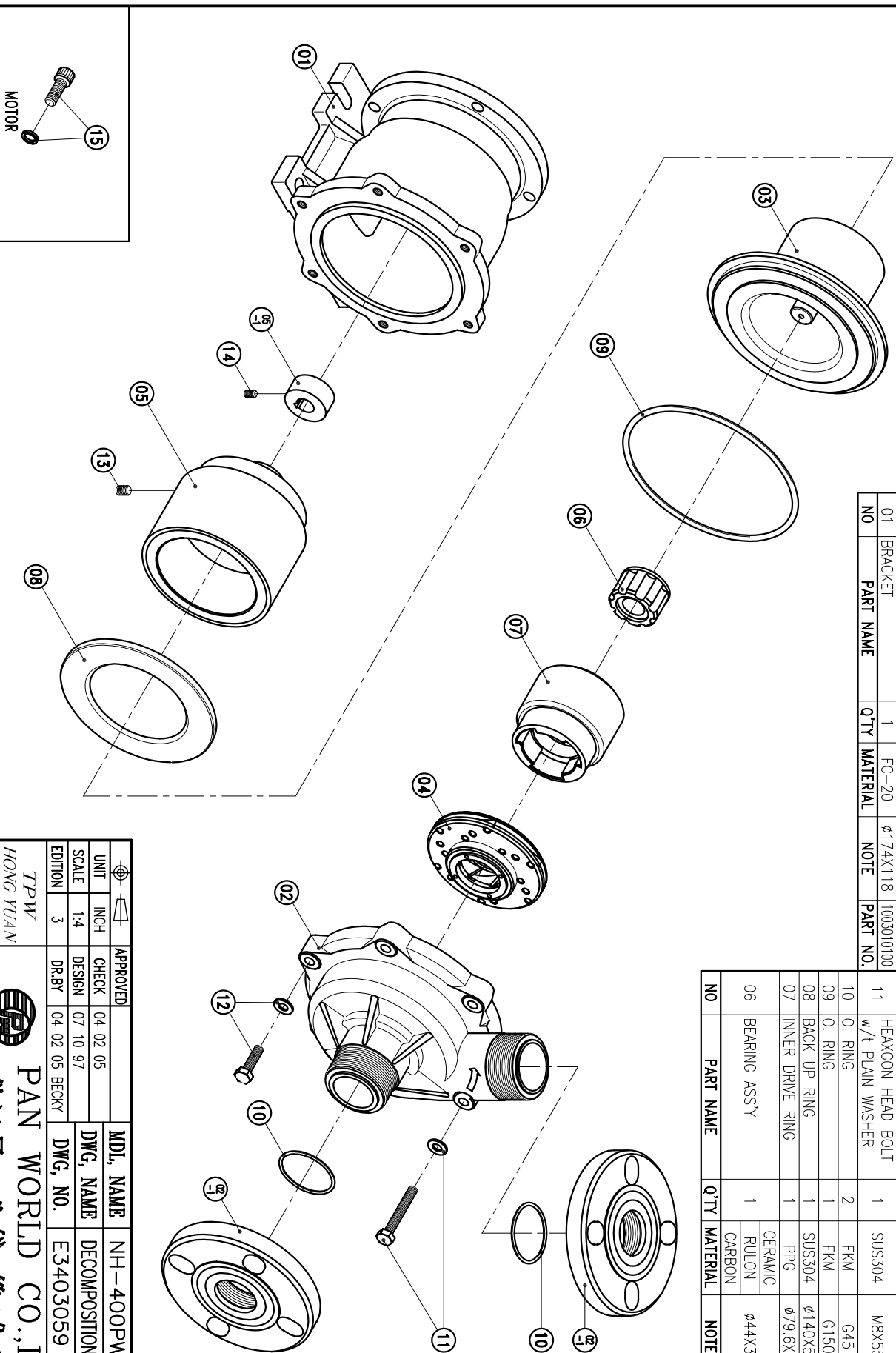


NO	PART NAME	Q'TY	MATERIAL	NOTE	PART NO.
05-1	RING	1	S45C	φ37.5X17.5	
05	OUTER DRIVE RING	1	ADC-12	φ117.5X117	1003011800
04	IMPELLER ASS'Y	1	PPG		1003011000
03	REAR CASING	1	PPG	φ164X92.5	1003010200
02-1	FLANGE	2	PPG	40A	1003011600
02	FRONT CASING	1	PPG	φ174X110	1003012300
01	BRACKET	1	FC-20	φ174X118	1003010100

15	HEAXGON SOCKET BOLT	4	SUS304	3/8" - 16X1"	
14	w/t SPRING WASHER	1	S435	M6X10	
13	SET SCREW	2	S435	M8X10	
12	HEAXGON HEAD BOLT	5	SUS304	M8X30	
11	w/t PLAIN WASHER	1	SUS304	M8X35	
10	O. RING	2	FKM	G45	1003012700
09	O. RING	1	FKM	G150	1013012300
08	BACK UP RING	1	SUS304	φ140X5.5	1003010300
07	INNER DRIVE RING	1	PPG	φ79.6X71	1003010812
06	BEARING ASS'Y	1	CERAMIC RULON CARBON	φ44X31	1003010811 1003010810



APPROVED	CHECK	DESIGN	DR.BY	MDL NAME	DWG. NAME	DECOMPOSITION	DRAWING
	04.02.05	07.10.97	04.02.05 BECKY	NH-400PW (NEMA)			
					DWG. NO.	E3403059	A3

TPW
HONG YUAN



PAN WORLD CO., LTD.
パンワールド株式会社