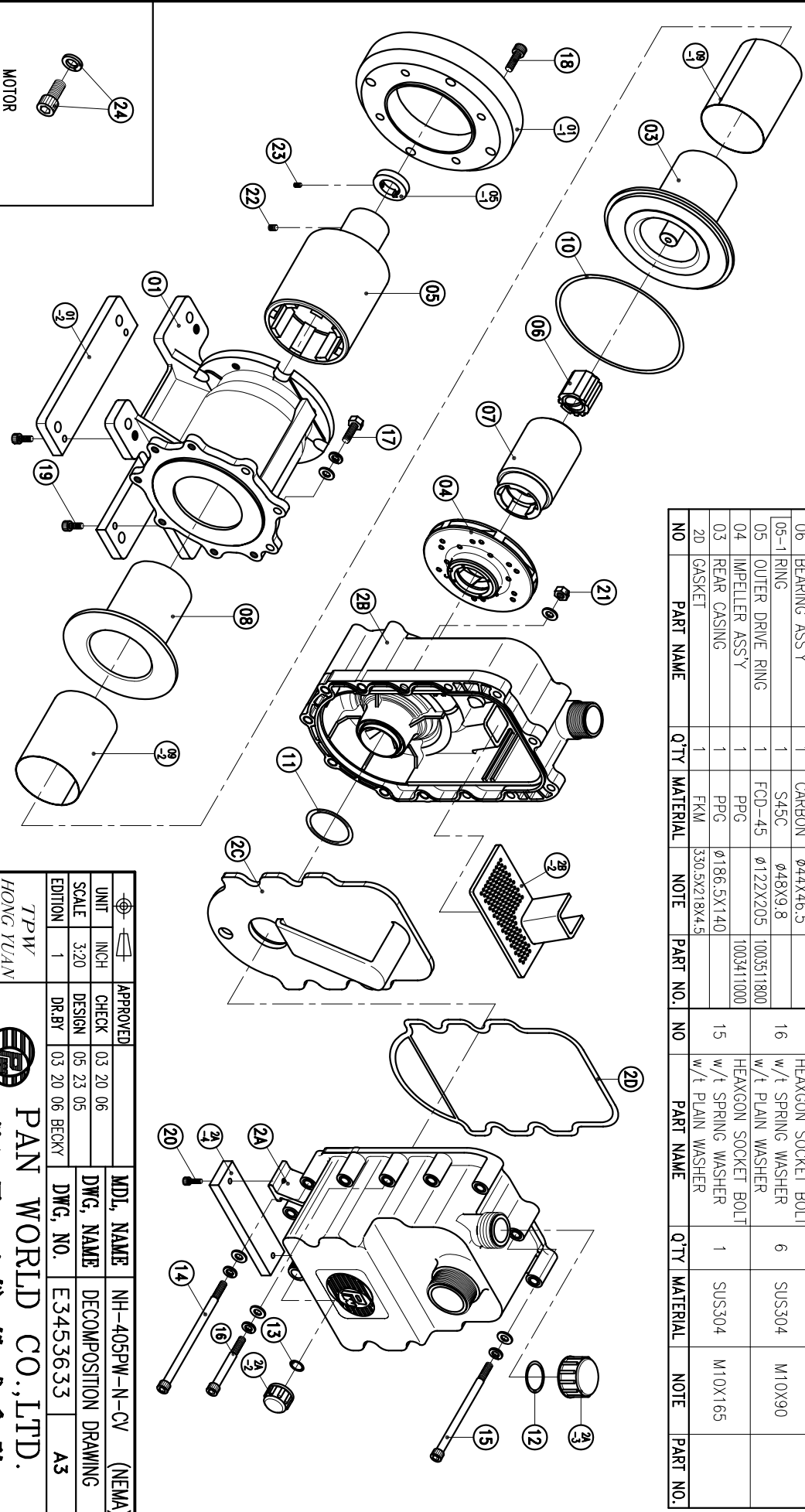


NO	PART NAME	Q'TY	MATERIAL	NOTE	PART NO.
2C	TELESCOPIC PIECE	1	PPG	323.5X211X88	
2B-1	FILTER	1	PPG	164X91X55	
2B	REAR CASING CHAMBER	1	PPG	404X226X123	
2A-3	FOOT	1	PVC	170X45X15	
2A-2	FILLER CAP	1	PPG	φ55X30	
2A-1	DRAIN CAP	1	PPG	φ36X24	
2A	FRONT CASING CHAMBER	1	PPG	385X226X175	
02	SELF-PRIMING CHAMBER	1	PVC	245X60X15	
01-1	TRANSITION FLANGE	1	FC-20	φ228.6X38.5	
01	BRACKET	1	FC-20	φ208X191	

NO	PART NAME	Q'TY	MATERIAL	NOTE	PART NO.	NO	PART NAME	Q'TY	MATERIAL	NOTE	PART NO.
14	HEXAGON SOCKET BOLT w/1 SPRING WASHER w/1 PLAIN WASHER	6	SUS304	M10X180		24	HEXAGON SOCKET BOLT w/1 SPRING WASHER	4	SUS304	1/2"-13X1"	
13	O. RING	1	FKM	P20		23	SET SCREW	2	S435	M6X10	
12	O. RING	1	FKM	G35		22	SET SCREW	2	S435	M8X10	
11	O. RING	1	FKM	G60		21	NUT	13	SUS304	M10	
10	O. RING	1	FKM	G175	1003012302	20	HEXAGON SOCKET BOLT	2	SUS304	M6X20	
09-2	PTFE BOARD	1	PTFE	281.8X122.9		19	HEXAGON SOCKET BOLT	4	SUS304	M8X20	
09-1	PTFE BOARD	1	PTFE	278.6X122.9		18	HEXAGON SOCKET BOLT	4	SUS304	M10X30	
09	PTFE BOARD	2	PTFE	LX122.9		17	HEXAGON HEAD BOLT w/1 SPRING WASHER	3	SUS304	M10X30	
08	REAR CASING COVER	1	SUS304	φ164X137	1004912308	16	HEXAGON SOCKET BOLT w/1 SPRING WASHER	6	SUS304	M10X90	
07	INNER DRIVE RING	1	PPG	φ79.6X124		15	HEXAGON SOCKET BOLT w/1 SPRING WASHER	1	SUS304	M10X165	
06	BEARING ASS'Y	1	CARBON	φ44X46.5							
05-1	RING	1	S45C	φ48X9.8							
05	OUTER DRIVE RING	1	FCD-45	φ122X205	1003511800						
04	IMPELLER ASS'Y	1	PPG		1003411000						
03	REAR CASING	1	PPG	φ186.5X140							
2D	GASKET	1	FKM	330.5X218X4.5							



APPROVED	CHECK	DESIGN	DR.BY	MDL. NAME	DWG. NAME	DWG. NO.
03 20 06	05 23 05	03 20 06	BECKY	NH-405PW-N-CV (NEMA)	DECOMPOSITION DRAWING	E3453633
UNIT INCH	SCALE 3:20	EDITION 1				A3

TPW  
HONG YUAN

**PAN WORLD CO., LTD.**  
パンワールド株式会社