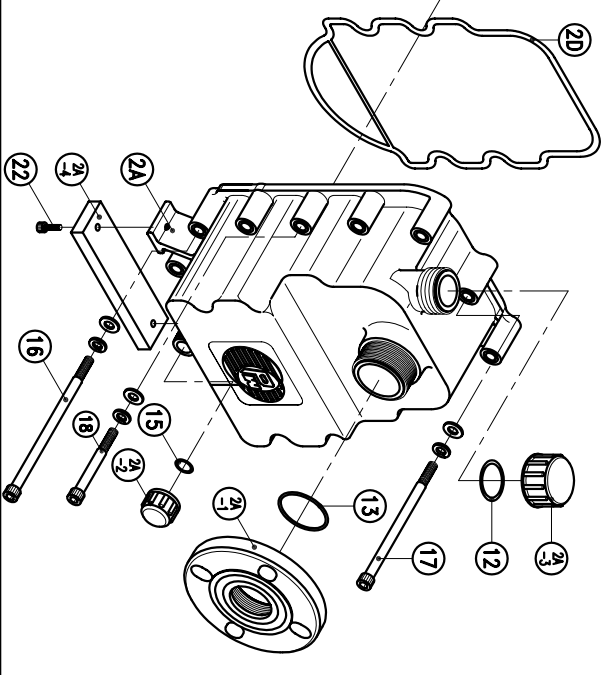
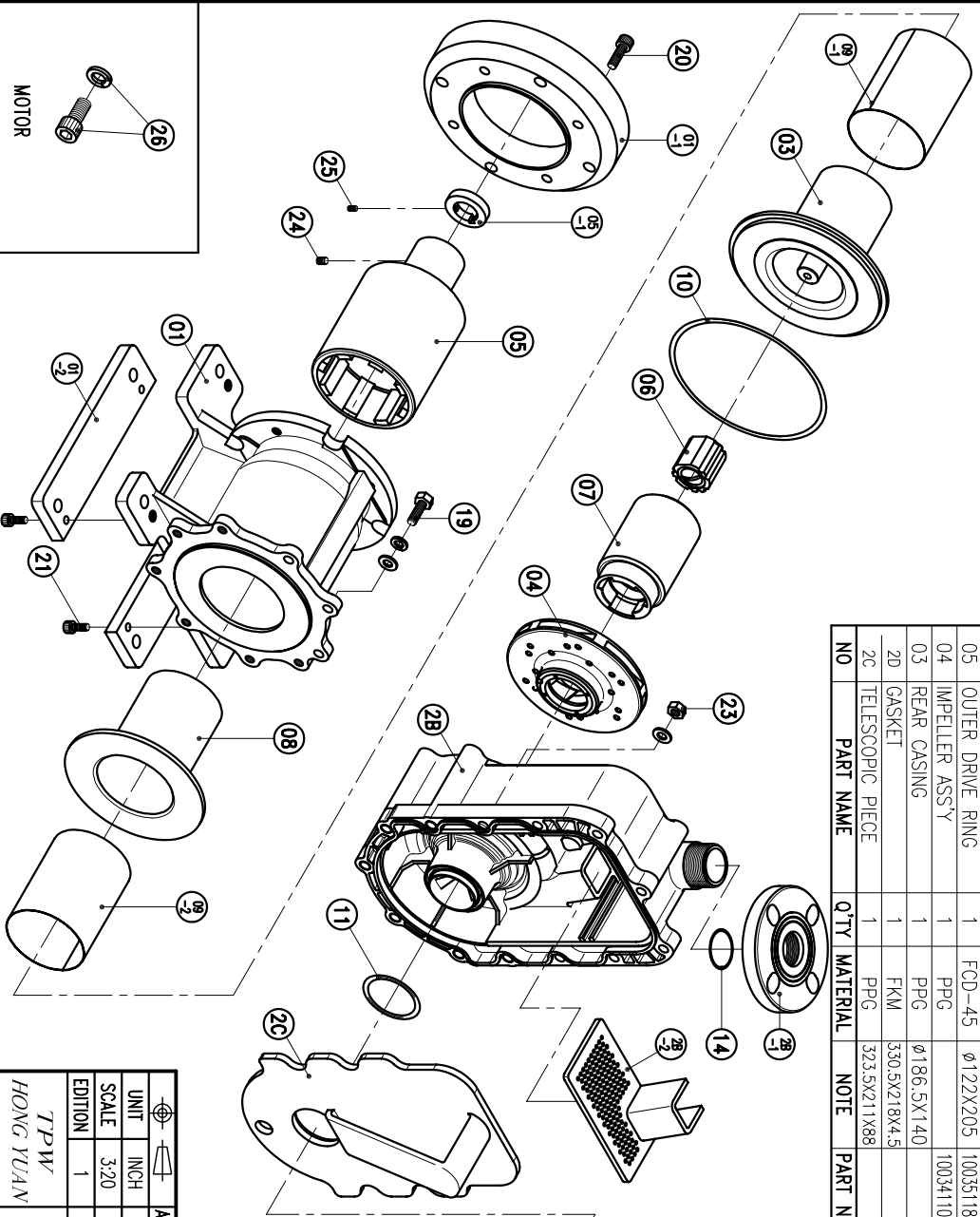


NO	PART NAME	Q'TY	MATERIAL	NOTE	PART NO.
2B-2	FILTER	1	PPG	164X91X55	
2B-1	FLANGE	1	PPG	40A	
2B	REAR CASING CHAMBER	1	PPG	404X226X123	
2A-4	FOOT	1	PVC	170X45X15	
2A-3	FILLER CAP	1	PPG	φ55X30	
2A-2	DRAIN CAP	1	PPG	φ36X24	
2A-1	FLANGE	1	PPG	50A	
2A	FRONT CASING CHAMBER	1	PPG	385X226X175	
02	SELF-PRIMING CHAMBER	1	PPG	245X60X15	
01-2	FOOT	1	PVC	φ228.6X38.5	
01-1	TRANSITION FLANGE	1	FC-20	φ208X191	
01	BRACKET	1	FC-20	φ208X191	

NO	PART NAME	Q'TY	MATERIAL	NOTE	PART NO.
15	O. RING	1	FKM	P20	
14	O. RING	1	FKM	S40	
13	O. RING	1	FKM	S50	
12	O. RING	1	FKM	G35	
11	O. RING	1	FKM	G60	
10	O. RING	1	FKM	G175	1003012302
09-2	PTFE BOARD	1	PTFE	281.8X122.9	
09-1	PTFE BOARD	1	PTFE	278.6X122.9	
09	PTFE BOARD	2	PTFE	LX122.9	
08	REAR CASING COVER	1	SUS304	φ164X137	1004912308
07	INNER DRIVE RING	1	PPG	φ79.6X124	
06	BEARING ASS'Y	1	CARBON	φ44X46.5	
05-1	RING	1	S45C	φ48X9.8	
05	OUTER DRIVE RING	1	FOD-45	φ122X205	1003511800
04	IMPELLER ASS'Y	1	PPG		1003411000
03	REAR CASING	1	PPG	φ186.5X140	
2D	GASKET	1	FKM	330.5X218X4.5	
2C	TELESCOPIC PIECE	1	PPG	323.5X211X88	

NO	PART NAME	Q'TY	MATERIAL	NOTE	PART NO.
26	HEXAGON SOCKET BOLT w/t SPRING WASHER	4	SUS304	1/2" - 13X1"	
25	SET SCREW	2	S435	M6X10	
24	SET SCREW	2	S435	M8X10	
23	NUT w/t PLAIN WASHER	13	SUS304	M10	
22	HEXAGON SOCKET BOLT	2	SUS304	M6X20	
21	HEXAGON SOCKET BOLT	4	SUS304	M8X20	
20	HEXAGON SOCKET BOLT	4	SUS304	M10X30	
19	HEXAGON HEAD BOLT w/t SPRING WASHER w/t PLAIN WASHER	3	SUS304	M10X30	
18	HEXAGON SOCKET BOLT w/t SPRING WASHER w/t PLAIN WASHER	6	SUS304	M10X90	
17	HEXAGON SOCKET BOLT w/t SPRING WASHER w/t PLAIN WASHER	1	SUS304	M10X165	
16	HEXAGON SOCKET BOLT w/t SPRING WASHER w/t PLAIN WASHER	6	SUS304	M10X180	



UNIT	INCH
SCALE	3:20
EDITION	1

TPW
HONG YUAN

APPROVED	03 08 06	CHECK	03 08 06	MDL NAME	NH-405PW-N-CV (NEMA)
DESIGN	05 23 05	DR.BY	03 08 06 BECKY	DWG. NAME	DECOMPOSITION DRAWING
				DWG. NO.	E3453531
					A3



PAN WORLD CO., LTD.
パナワールド株式会社