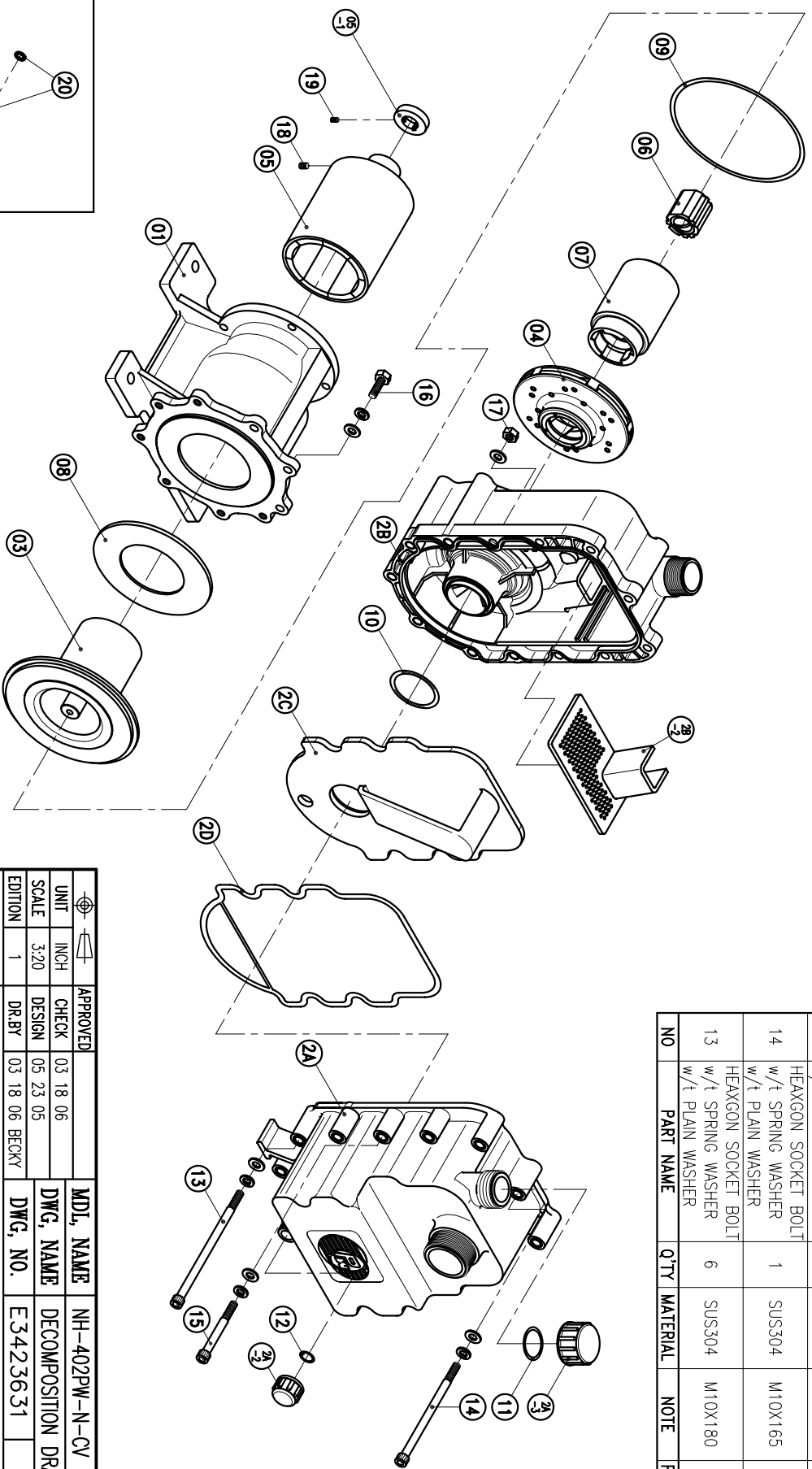


NO	PART NAME	Q'TY	MATERIAL	NOTE	PART NO.	NO	PART NAME	Q'TY	MATERIAL	NOTE	PART NO.
03	REAR CASING	1	PPG	φ186.5X141		12	O. RING	1	FKM	P20	
2D	GASKET	1	FKM	330.5X218X4.5		11	O. RING	1	FKM	G35	
2C	TELESCOPIC PIECE	1	PPG	323.5X211X88		10	O. RING	1	FKM	G60	
2B-1	FILTER	1	PPG	164X91X75		09	O. RING	1	FKM	G175	1003012302
2B	REAR CASING CHAMBER	1	PPG	404X226X123		08	BACK UP RING	1	SUS304	φ164X5.5	1003012100
2A-2	FILLER CAP	1	PPG	φ55X30		07	INNER DRIVE RING	1	PPG	φ79.6X124	
2A-1	DRAIN CAP	1	PPG	φ36X24		06	BEARING ASS'Y	1	CARBON	φ44X46.5	
2A	FRONT CASING CHAMBER	1	PPG	385X226X175		05-1	RING	1	S45C	φ44X10	
02	SELF-PRIMING CHAMBER	1	PPG	FC-20		05	OUTER DRIVE RING	1	FCD-45	φ118X183.5	1003211800
01	BRACKET	1	FC-20	φ208X196.5		04	IMPELLER ASS'Y	1	PPG		1003211000

NO	PART NAME	Q'TY	MATERIAL	NOTE	PART NO.
20	HEXAGON SOCKET BOLT w/t SPRING WASHER	4	SUS304	3/8" - 16X1"	
19	SET SCREW	2	S435	M6X10	
18	SET SCREW	2	S435	M8X10	
17	NUT w/t PLAIN WASHER	7	SUS304	M10	
16	HEXAGON HEAD BOLT w/t SPRING WASHER	3	SUS304	M10X30	
15	HEXAGON SOCKET BOLT w/t SPRING WASHER	6	SUS304	M10X90	
14	HEXAGON SOCKET BOLT w/t SPRING WASHER	1	SUS304	M10X165	
13	HEXAGON SOCKET BOLT w/t SPRING WASHER w/t PLAIN WASHER	6	SUS304	M10X180	



APPROVED	CHECK	DESIGN	DR.BY	MDL. NAME	DWG. NAME	DECOMPOSITION DRAWING	DWG. NO.	E3423631	A3
	03 18 06	05 23 05	03 18 06 BECKY	NH-402PW-N-CV (NEMA)					

TPW
HONG YUAN



PAN WORLD CO., LTD.
パンワールド株式会社