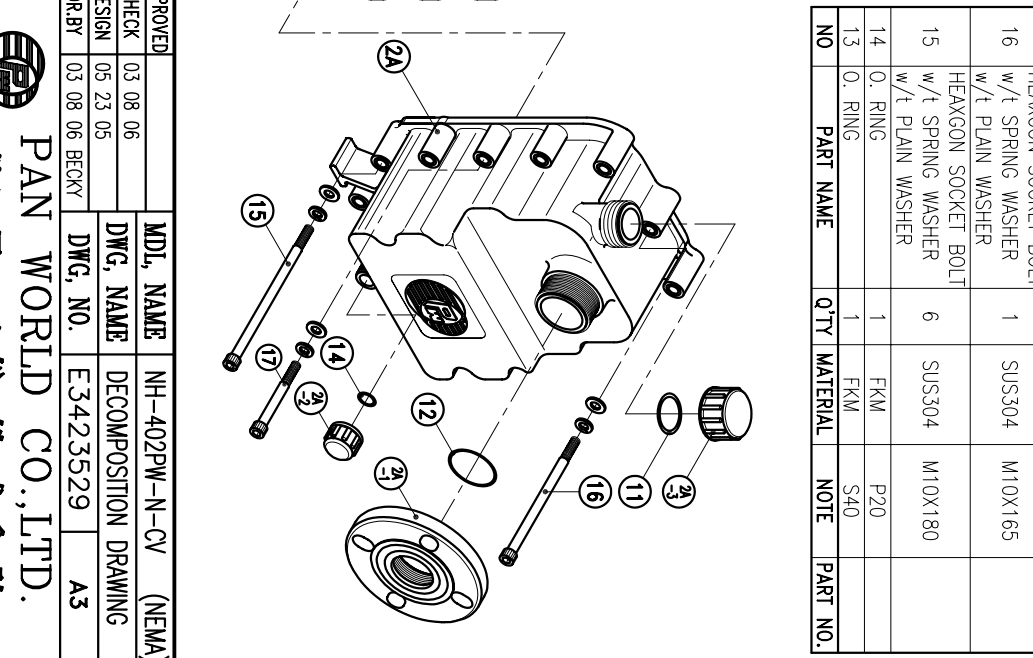
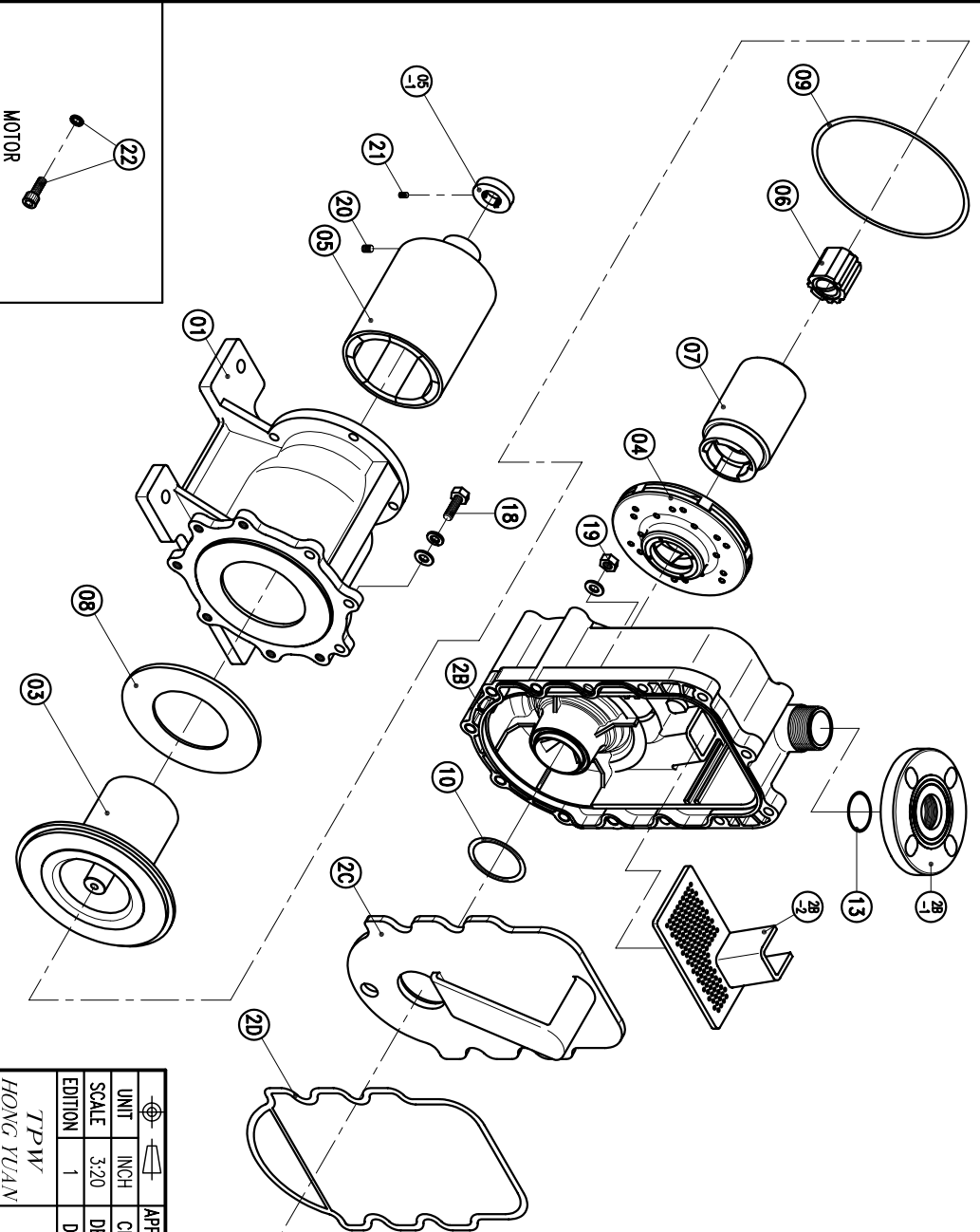


| NO | PART NAME | Q'TY | MATERIAL | NOTE | PART NO. | NO | PART NAME | Q'TY | MATERIAL | NOTE | PART NO. |
|------|----------------------|------|----------|---------------|----------|------|------------------|------|----------|------------|------------|
| 20 | GASKET | 1 | FKM | 330.5X218X4.5 | | 12 | O. RING | 1 | FKM | S50 | |
| 2C | TELESCOPIC PIECE | 1 | PPG | 323.5X211X88 | | 11 | O. RING | 1 | FKM | G35 | |
| 2B-2 | FILTER | 1 | PPG | 164X91X75 | | 10 | O. RING | 1 | FKM | G60 | |
| 2B-1 | FLANGE | 1 | PPG | 40A | | 09 | O. RING | 1 | FKM | G175 | 1003012302 |
| 2B | REAR CASING CHAMBER | 1 | PPG | 404X226X123 | | 08 | BACK UP RING | 1 | SUS304 | φ164X5.5 | 1003012100 |
| 2A-3 | FILLER CAP | 1 | PPG | φ55X30 | | 07 | INNER DRIVE RING | 1 | PPG | φ79.6X124 | |
| 2A-2 | DRAIN CAP | 1 | PPG | φ36X24 | | 06 | BEARING ASS'Y | 1 | CARBON | φ44X46.5 | |
| 2A-1 | FLANGE | 1 | PPG | 50A | | 05-1 | RING | 1 | S45C | φ44X10 | |
| 2A | FRONT CASING CHAMBER | 1 | PPG | 389X226X175 | | 05 | OUTER DRIVE RING | 1 | FCD-45 | φ118X183.5 | 1003211800 |
| 02 | SELF-PRIMING CHAMBER | 1 | PPG | | | 04 | IMPELLER ASS'Y | 1 | PPG | | 1003211000 |
| 01 | BRACKET | 1 | FC-20 | φ208X196.5 | | 03 | REAR CASING | 1 | PPG | φ186.5X141 | |

| | | | | | |
|----|---------------------|---|--------|------------|--|
| 22 | HEXAGON SOCKET BOLT | 4 | SUS304 | 3/8"-16X1" | |
| 21 | w/t SPRING WASHER | 2 | S435 | M6X10 | |
| 20 | SET SCREW | 2 | S435 | M8X10 | |
| 19 | NUT | 7 | SUS304 | M10 | |
| 18 | w/t PLAIN WASHER | 3 | SUS304 | M10X30 | |
| 17 | HEXAGON HEAD BOLT | 6 | SUS304 | M10X90 | |
| 16 | w/t SPRING WASHER | 1 | SUS304 | M10X165 | |
| 15 | HEXAGON SOCKET BOLT | 6 | SUS304 | M10X180 | |
| 14 | w/t SPRING WASHER | 1 | FKM | P20 | |
| 13 | O. RING | 1 | FKM | S40 | |



| APPROVED | CHECK | DESIGN | DR.BY | MDL. NAME | DWG. NAME | DECOMPOSITION | DRAWING |
|----------|----------|----------|-------|----------------------|-----------|---------------|---------|
| 03 08 06 | 05 23 05 | 03 08 06 | BECKY | NH-402PW-N-CV (NEMA) | E3423529 | A3 | |

TPW
 HONG YUAN

PAN WORLD CO., LTD.
パンワールド株式会社