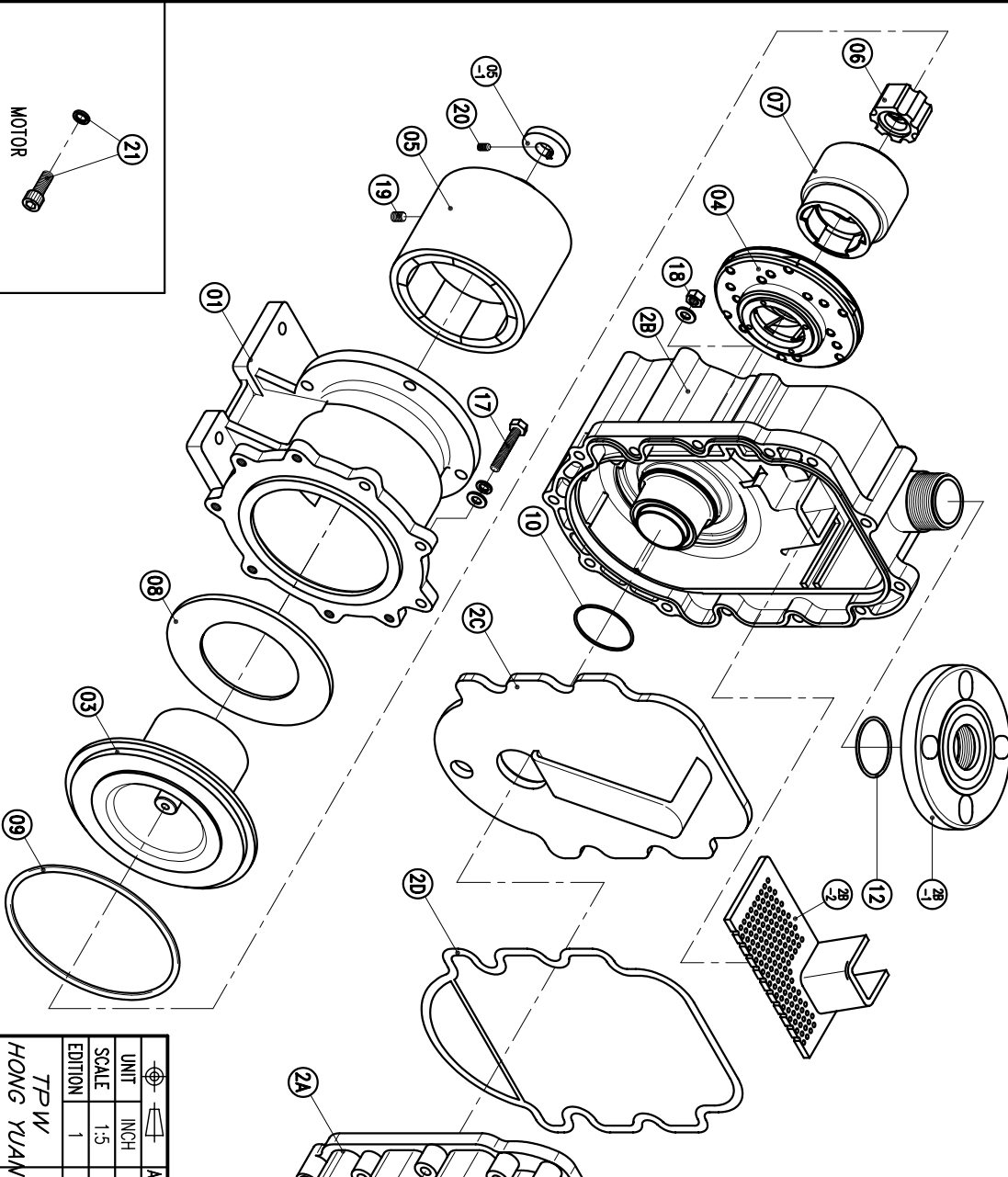


NO	PART NAME	Q'TY	MATERIAL	NOTE	PART NO.	NO	PART NAME	Q'TY	MATERIAL	NOTE	PART NO.
2B-2	FILTER	1	PPG	164X77X60		08	BACK UP RING	1	SUS304	φ150X5.5	1003113300
2B-1	FLANGE	1	PPG	40A		07	INNER DRIVE RING	1	PPG	φ79.6X71	
2B	REAR CASING CHAMBER	1	PPG	368X226X99		06	BEARING ASS'Y	1	CARBON	φ44X31	
2A-3	FILLER CAP	1	PPG	φ55X30		05-1	RING	1	S45C	φ40X7.5	
2A-2	DRAIN CAP	1	PPG	φ36X24		05	OUTER DRIVE RING	1	FCD-45	φ123X127.5	100311800
2A-1	FLANGE	1	PPG	40A		04	IMPELLER ASS'Y	1	PPG		1003111000
2A	FRONT CASING CHAMBER	1	PPG	342X226X152		03	REAR CASING	1	PPG	φ174X92.5	1003110200
02	SELF-PRIMING CHAMBER	1	PPG	φ195X145		2C	GASKET	1	FKM	293X218X4.5	
01	BRACKET	1	FC-20			2D	TELESCOPIC PIECE	1	PPG	286X211X68	

21	HEXAGON SOCKET BOLT	4	SUS304	3/8" - 16X1"	
20	w/t SPRING WASHER	4	SUS304		
19	SET SCREW	2	S435	M6X10	
18	NUT	2	S435	M8X10	
17	w/t PLAIN WASHER	7	SUS304	M8	
16	HEXAGON HEAD BOLT	3	SUS304	M8X30	
15	w/t SPRING WASHER	3	SUS304		
14	w/t PLAIN WASHER	3	SUS304		
13	HEXAGON SOCKET BOLT	6	SUS304	M8X70	
12	w/t SPRING WASHER	6	SUS304		
11	w/t PLAIN WASHER	1	SUS304	M8X130	
10	HEXAGON SOCKET BOLT	1	SUS304	M8X145	
09	w/t SPRING WASHER	6	SUS304		
08	w/t PLAIN WASHER	1	SUS304	M8X145	
07	HEXAGON SOCKET BOLT	1	FKM	P20	
06	O. RING	2	FKM	S40	
05	O. RING	1	FKM	G35	
04	O. RING	1	FKM	G50	
03	O. RING	1	FKM	G160	1003012301



APPROVED	CHECK	SCALE	EDITION	MDL. NAME	DWG. NAME	DWG. NO.
		1:5	1	NH-401PW-N-CV (NEMA)	DECOMPOSITION DRAWING	E3413528
						A3

TPW
HONG YUAN

PAN WORLD CO., LTD.
パンワールド株式会社