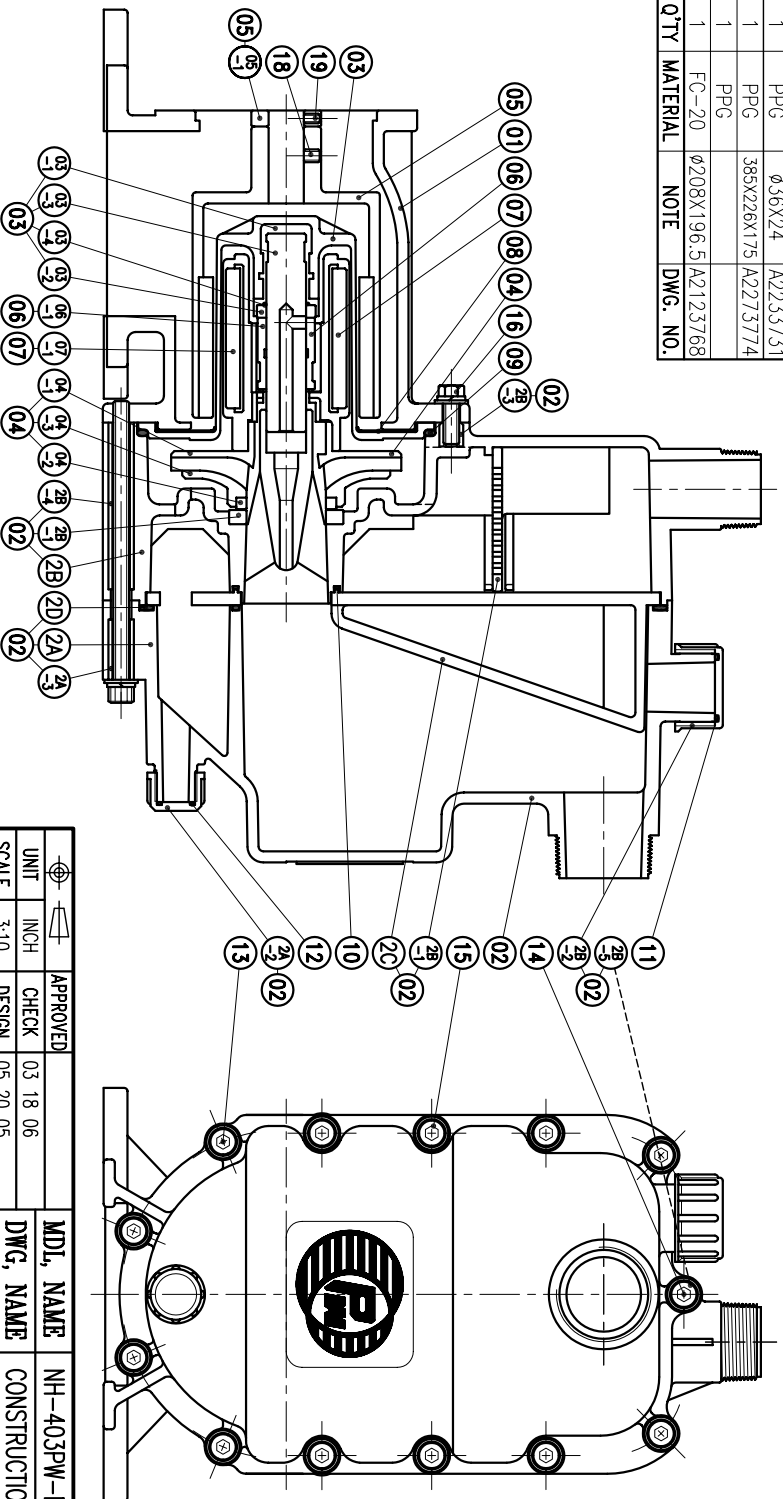


NO	PART NAME	QTY	MATERIAL	NOTE	DWG. NO.	NO	PART NAME	QTY	MATERIAL	NOTE	DWG. NO.
04-2	MOUTH RING	1	RULON	φ63X8	P2429006						
04-1	IMPELLER NOUМЕНON	1	PPG	φ160X44	P2419024	13	HEXAGON SOCKET BOLT	6	SUS304	M10X180	
04	IMPELLER ASS'Y	1	PPG		A2403784		w/1 S.W.(M10)				20
03-4	O. RING	1	FKM	φ24.4Xφ3.1	G25	12	O. RING	1	FKM	φ19.8Xφ2.4	P20
03-3	SPINDLE	1	CERAMIC	φ25X125	A2333752	11	O. RING	1	FKM	φ34.4Xφ3.1	G35
03-2	REAR THRUST PAD	1	CERAMIC	φ37X8	P2329184	10	O. RING	1	FKM	φ59.4Xφ3.1	G60
03-1	SPINDLE HOLDER	1	ETFE	φ41X131		09	O. RING	1	FKM	φ17.4.3Xφ5.7	G175
03	REAR CASING	1	PPG	φ186.5X141	A2303782	08	BACK UP RING	1	SUS304	φ164X5.5	P2119175
2D	GASKET	1	FKM	330.5X218X4.5	A9423724	07-1	INNER MAGNET	1	Sr.FERRITE	φ76X9.3	P2449490
2C	TELESCOPIC PIECE	1	PPG	323.5X211X88	A2213723	07	INNER DRIVE RING	1	PPG	φ79.6X124	A2433787
2B-5	SLEEVE	1	SUS304	φ16X90	A9123742	06-1	BEARING	1	CARBON	φ56X45	P2469773
2B-4	SLEEVE	6	SUS304	φ16X105	A9123743	06	BEARING ASS'Y	1	ETFE	φ44X46.5	A2463761
2B-3	SCREW	3	SUS304	M10X15	A2273790	05-1	RING	1	S45C	φ44X10	P2579340
2B-2	FILTER	1	PPG	164X91X65	A2273790	05	OUTER DRIVE RING	1	FCD-45	φ118X183.5	P2509335
2B-1	THRUST PAD	1	CERAMIC	φ72X9	P2229315	04-3	IMPELLER COVER	1	PPG	φ160X25	P2459026
2B	REAR CASING CHAMBER	1	PPG	404X226X123	A2213722						14
2A-3	SLEEVE	13	SUS304	φ16X38	A9123742						15
2A-2	FILLER CAP	1	PPG	φ55X30	A2279236						14
2A-1	DRAIN CAP	1	PPG	φ36X24	A2233731						13
2A	FRONT CASING CHAMBER	1	PPG	385X226X175	A2273774						12
02	SELF-PRIMING CHAMBER	1	PPG								11
01	BRACKET	1	FC-20	φ208X196.5	A2123768						10



APPROVED	CHECK	DESIGN	DRBY	MDL. NAME	DWG. NAME	DWG. NO.
	03 18 06	05 20 05	03 18 06 BECKY	NH-403PW-N-CV (NEMA)	CONSTRUCTION DRAWING	E2433627
UNIT	INCH	SCALE	3:10	EDITION	1	

TPW  
HONG YUAN

**PAN WORLD CO., LTD.**  
パンワールド株式会社