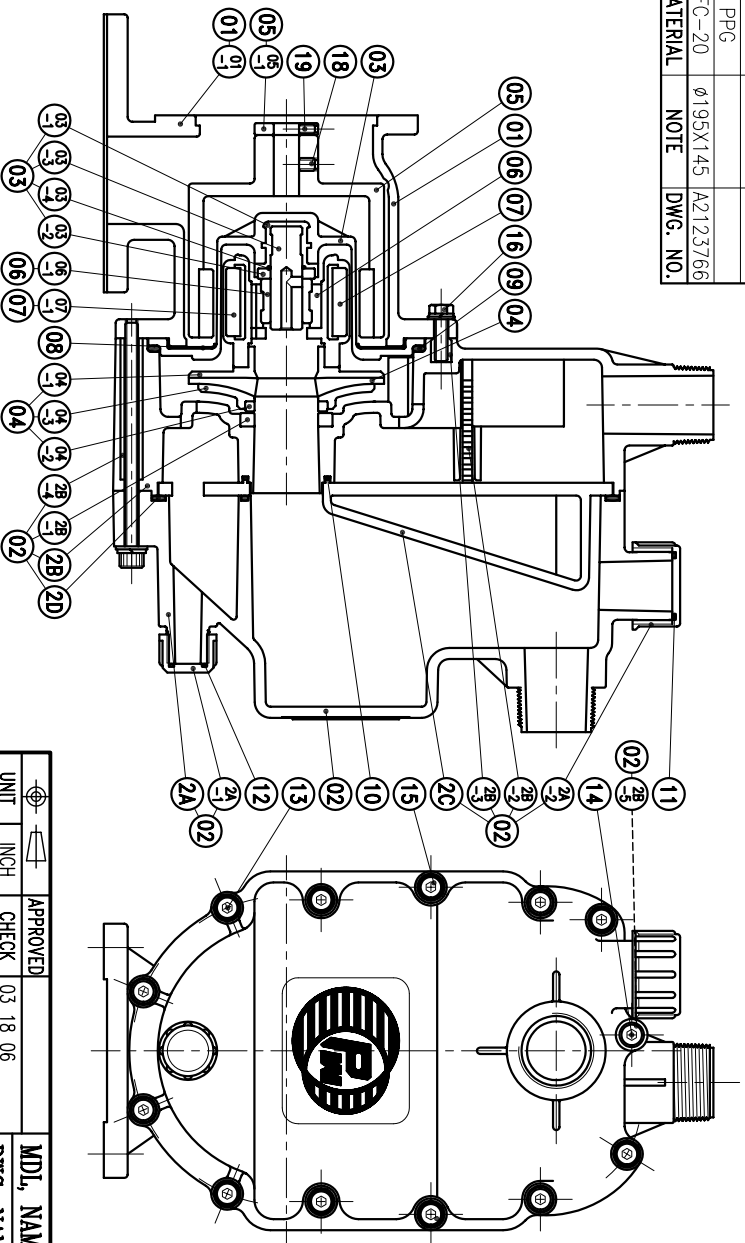


04-2	MOUTH RING	1	RULON	φ52X7	P2429098	HEXAGON SOCKET BOLT	13	w/1 S.W.(M8)	6	SUS304	M8X145	20	HEXAGON SOCKET BOLT	4	SUS304	3/8" - 16X1"	
04-1	IMPELLER NOUWENON	1	PPG	φ124X33	P2419051	w/1 P.W.(φ17Xφ8.4X11.6)	19	SET SCREW	2	S435	M6X10	19	SET SCREW	2	S435	M6X10	
04	IMPELLER ASS'Y	1	PPG		A2403783		18	SET SCREW	2	S435	M8X10	18	SET SCREW	2	S435	M8X10	
03-4	O. RING	1	FKM	φ19.8Xφ2.4	P20		17	NUT	1	SUS304	M8	17	NUT	1	SUS304	M8	
03-3	SPINDLE	1	CERAMIC	φ20X65	A2333759		16	HEXAGON HEAD BOLT	3	SUS304	M8X30	16	HEXAGON HEAD BOLT	3	SUS304	M8X30	
03-2	REAR THRUST PAD	1	CERAMIC	φ36X6.5	P2329095		15	HEXAGON SOCKET BOLT	6	SUS304	M8X70	15	HEXAGON SOCKET BOLT	6	SUS304	M8X70	
03-1	SPINDLE HOLDER	1	ETFE	φ40X68			14	HEXAGON SOCKET BOLT	1	SUS304	M8X130	14	HEXAGON SOCKET BOLT	1	SUS304	M8X130	
03	REAR CASING	1	PPG	φ174X92.5	A2303781		13	HEXAGON SOCKET BOLT	1	SUS304	M8X130	13	HEXAGON SOCKET BOLT	1	SUS304	M8X130	
2D	GASKET	1	FKM	293X218X4.5	A9423725		12	HEXAGON SOCKET BOLT	1	SUS304	M8X130	12	HEXAGON SOCKET BOLT	1	SUS304	M8X130	
2C	TELESCOPIC PIECE	1	PPG	286X211X68	A2213726		11	HEXAGON SOCKET BOLT	1	SUS304	M8X130	11	HEXAGON SOCKET BOLT	1	SUS304	M8X130	
2B-5	SLEEVE	1	SUS304	φ14X75	A9123755		10	HEXAGON SOCKET BOLT	1	SUS304	M8X130	10	HEXAGON SOCKET BOLT	1	SUS304	M8X130	
2B-4	SLEEVE	6	SUS304	φ14X89	A9123754		9	HEXAGON SOCKET BOLT	1	SUS304	M8X130	9	HEXAGON SOCKET BOLT	1	SUS304	M8X130	
2B-3	SCREW	3	SUS304	M8X15	A9123754		8	HEXAGON SOCKET BOLT	1	SUS304	M8X130	8	HEXAGON SOCKET BOLT	1	SUS304	M8X130	
2B-2	FILTER	1	PPG	164X77X60	A2213729		7	HEXAGON SOCKET BOLT	1	SUS304	M8X130	7	HEXAGON SOCKET BOLT	1	SUS304	M8X130	
2B-1	THRUST PAD	1	CERAMIC	φ58X8.5	P2229092		6	HEXAGON SOCKET BOLT	1	SUS304	M8X130	6	HEXAGON SOCKET BOLT	1	SUS304	M8X130	
2B	REAR CASING CHAMBER	1	PPG	368X226X99	A2213719		5	HEXAGON SOCKET BOLT	1	SUS304	M8X130	5	HEXAGON SOCKET BOLT	1	SUS304	M8X130	
2A-2	FILLER CAP	1	PPG	φ55X30	A2219236		4	HEXAGON SOCKET BOLT	1	SUS304	M8X130	4	HEXAGON SOCKET BOLT	1	SUS304	M8X130	
2A-1	DRAIN CAP	1	PPG	φ36X24	A2233731		3	HEXAGON SOCKET BOLT	1	SUS304	M8X130	3	HEXAGON SOCKET BOLT	1	SUS304	M8X130	
2A	FRONT CASING CHAMBER	1	PPG	342X226X152	A2213789		2	HEXAGON SOCKET BOLT	1	SUS304	M8X130	2	HEXAGON SOCKET BOLT	1	SUS304	M8X130	
02	SELF-PRIMING CHAMBER	1	PPG				1	HEXAGON SOCKET BOLT	1	SUS304	M8X130	1	HEXAGON SOCKET BOLT	1	SUS304	M8X130	
01	BRACKET	1	FC-20	φ195X145	A2123766												
NO	PART NAME	Q'TY	MATERIAL	NOTE	DWG. NO.	NO	PART NAME	Q'TY	MATERIAL	NOTE	DWG. NO.	NO	PART NAME	Q'TY	MATERIAL	NOTE	DWG. NO.



APPROVED		MDL. NAME	NH-401PW-N-CV (NEMA)
CHECK	03 18 06	DWG. NAME	CONSTRUCTION DRAWING
DESIGN	05 21 05	DWG. NO.	E2413625
DR.BY	03 18 06 BECKY		A3

TPW
HONG YUAN



PAN WORLD CO., LTD.
パンワールド株式会社