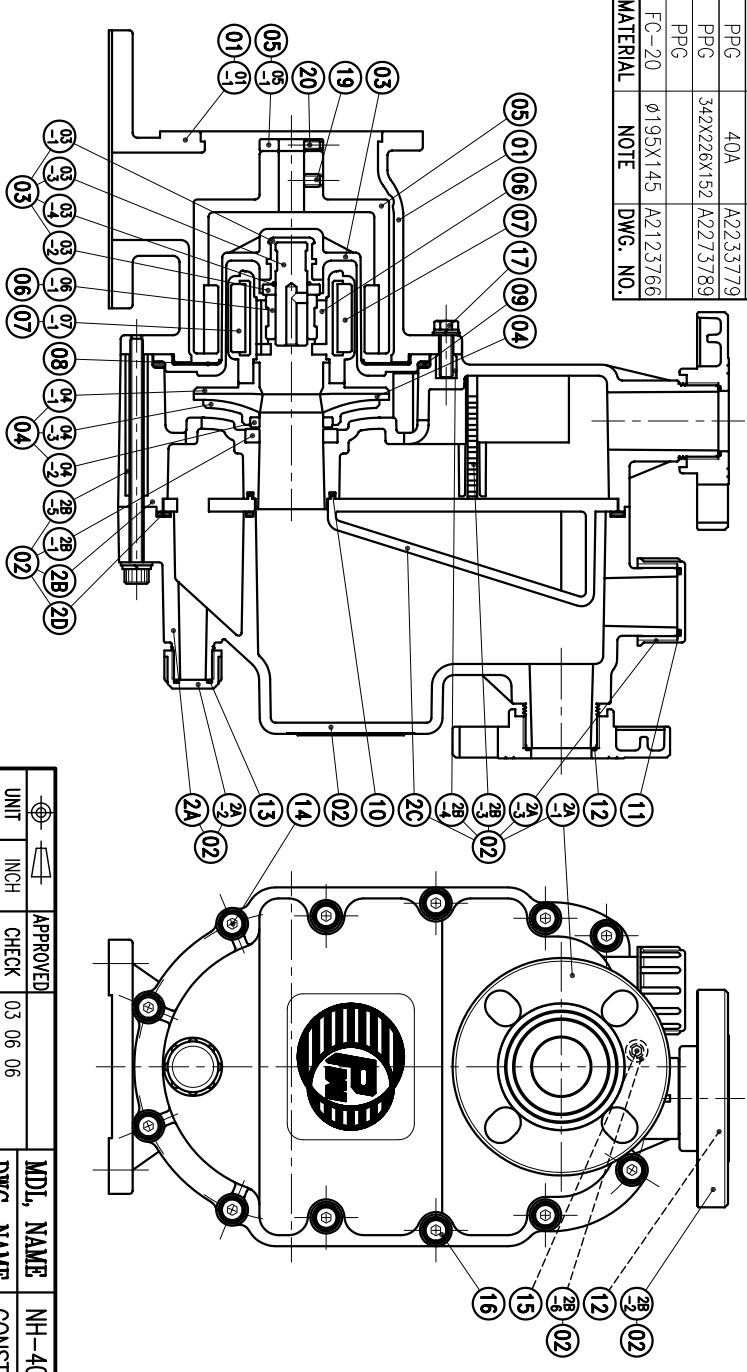


NO	PART NAME	Q'TY	MATERIAL	NOTE	DWG. NO.	NO	PART NAME	Q'TY	MATERIAL	NOTE	DWG. NO.					
04-2	MOUTH RING	1	RULON	φ52X7	P2429088											
04-1	IMPELLER NOUМЕНON	1	PPG	φ124X33	P2419051											
04	IMPELLER ASS'Y	1	PPG		A2403783	14	HEXAGON SOCKET BOLT w/1 S.W.(M8)	6	SUS304	M8X145						
03-4	O. RING	1	FKM	φ19.8Xφ2.4	P20	13	O. RING	1	FKM	φ19.8Xφ2.4	21	HEXAGON SOCKET BOLT w/1 S.W.(3/8")(MOTOR)	4	SUS304	3/8"-16X1"	
03-3	SPINDLE	1	CERAMIC	φ20Xφ5	A2333759	12	O. RING	2	FKM	φ39.5Xφ2	20	SET SCREW	2	S435	M6X10	
03-2	REAR THRUST PAD	1	CERAMIC	φ36X6.5	P2329095	11	O. RING	1	FKM	φ34.4Xφ3.1	19	SET SCREW	2	S435	M8X10	
03-1	SPINDLE HOLDER	1	ETFE	φ40X68		10	O. RING	1	FKM	φ49.4Xφ3.1	G50					
03	REAR CASING	1	PPG	φ174X92.5	A2303781	09	O. RING	1	FKM	φ159.3Xφ5.7	G160					
2D	GASKET	1	FKM	293X218X4.5	A9423725	08	BACK UP RING	1	SUS304	φ150X5.5	P2119054	17	HEXAGON HEAD BOLT w/1 S.W.(M8)	3	SUS304	M8X30
2C	TELESCOPIC PIECE	1	PPG	286X211X68	A2213726	07-1	INNER MAGNET	1	Sr-FERRITE	φ76X47	P2449053					
2B-6	SLEEVE	1	SUS304	φ14X75	A9123755	07	INNER DRIVE RING	1	PPG	φ79.6X71	A2433786					
2B-5	SLEEVE	6	SUS304	φ14X89	A9123754	06-1	BEARING	1	CARBON	φ32X28	P2469771	16	HEXAGON SOCKET BOLT w/1 S.W.(M8)	6	SUS304	M8X70
2B-4	SCREW	3	SUS304	M8X15	A9123754	06	BEARING ASS'Y	1	ETFE	φ44X31	A2463788					
2B-3	FILTER	1	PPG	164X77X60	A2213729	05-1	RING	1	S45C	φ40X7.5	P2519333					
2B-2	FLANGE	1	PPG	40A	A2233779	05	OUTER DRIVE RING	1	FCD-45	φ123X127.5	P2509334	15	HEXAGON SOCKET BOLT w/1 S.W.(M8)	1	SUS304	M8X130
2B-1	THRUST PAD	1	CERAMIC	φ58X8.5	P2229092	04-3	IMPELLER COVER	1	PPG	φ124X18	P2459052					
2B	REAR CASING CHAMBER	1	PPG	368X226X99	A2213719											
2A-3	FILLER CAP	1	PPG	φ55X30	A2279236											
2A-2	DRAIN CAP	1	PPG	φ36X24	A2233731											
2A-1	FLANGE	1	PPG	40A	A2233779											
2A	FRONT CASING CHAMBER	1	PPG	342X226X152	A2273789											
02	SELF-PRIMING CHAMBER	1	PPG													
01	BRACKET	1	FC-20	φ195X145	A2123766											



APPROVED		MDL. NAME	NH-401PW-N-CV (NEMA)
CHECK	03.06.06	DWG. NAME	CONSTRUCTION DRAWING
DESIGN	05.21.05	DWG. NO.	E2413523
DR.BY	03.06.06 BECKY		A3

TPW
HONG YUAN

PAN WORLD CO., LTD.
パンワールド株式会社