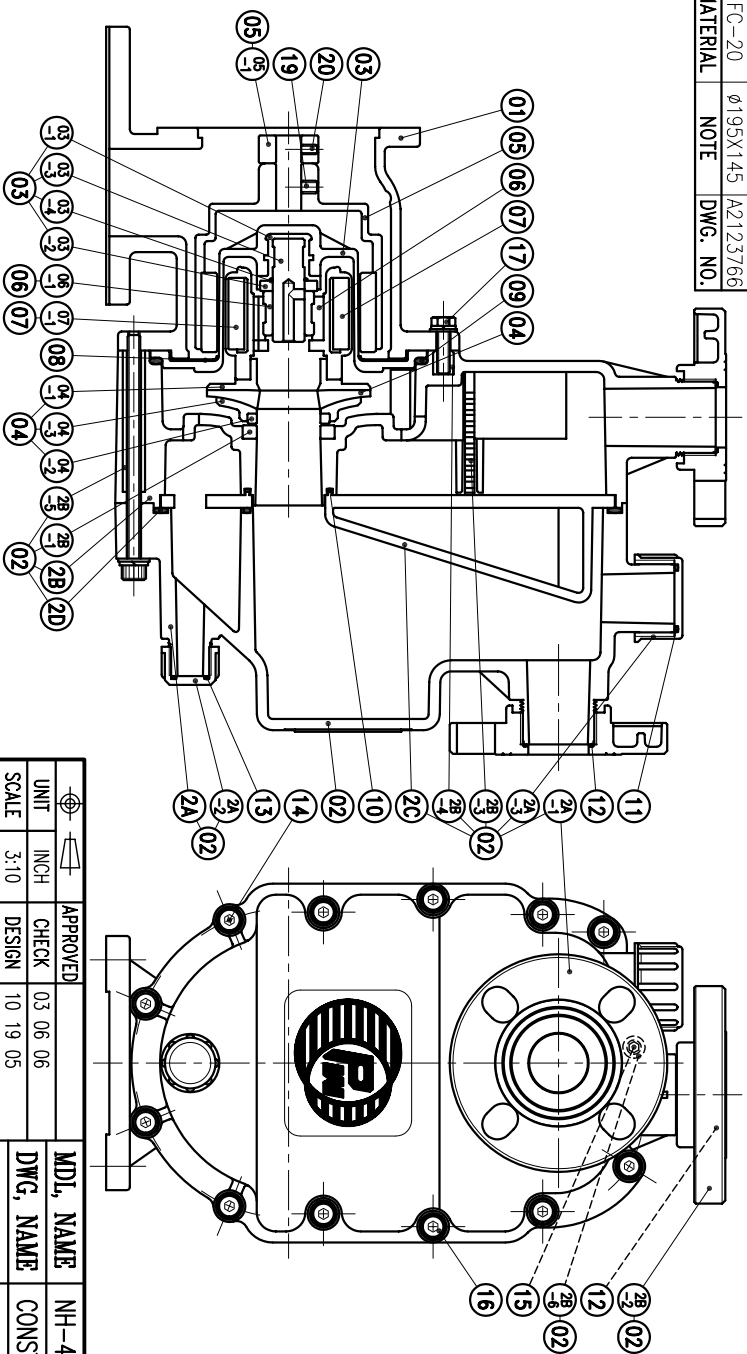


NO	PART NAME	Q'TY	MATERIAL	NOTE	DWG. NO.
04	IMPELLER ASS'Y	1	PPG	A2403783	
03-4	O. RING	1	FKM	φ19.8xφ2.4	P20
03-3	SPINDLE	1	CERAMIC	φ20xφ6.5	A2333759
03-2	REAR THRUST PAD	1	CERAMIC	φ36xφ6.5	P2329095
03-1	SPINDLE HOLDER	1	ETFE	φ40xφ8	
03	REAR CASING	1	PPG	φ174x92.5	A2303781
20	GASKET	1	FKM	293x218x4.5	A9423725
2C	TELESCOPIC PIECE	1	PPG	286x211xφ8	A2273726
2B-6	SEELVE	1	SUS304	φ14x7.5	A9123755
2B-5	SEELVE	6	SUS304	φ14x8.9	
2B-4	SCREW	3	SUS304	M8x1.5	A9123754
2B-3	FILTER	1	PPG	164x77x60	A2273729
2B-2	FLANGE	1	PPG	40A	A2233779
2B-1	THRUST PAD	1	CERAMIC	φ58x8.5	P2229092
2B	REAR CASING CHAMBER	1	PPG	368x226x89	A2273719
2A-3	FILLER CAP	1	PPG	φ55x30	A2219236
2A-2	DRAIN CAP	1	PPG	φ36x24	A2233731
2A-1	FLANGE	1	PPG	40A	A2233779
2A	FRONT CASING CHAMBER	1	PPG	342x226x152	A2273789
02	SELF-PRIMING CHAMBER	1	PPG		
01	BRACKET	1	FC-20	φ195x145	A2123766
14	HEXAGON SOCKET BOLT	6	SUS304	M8x1.45	
13	O. RING	1	FKM	φ19.8xφ2.4	P20
12	O. RING	2	FKM	φ39.5xφ2	S40
11	O. RING	1	FKM	φ34.4xφ3.1	G35
10	O. RING	1	FKM	φ49.4xφ3.1	G50
09	O. RING	1	FKM	φ159.3xφ5.7	G160
08	BACK UP RING	1	SUS304	φ150x5.5	P2119054
07-1	INNER MAGNET	1	FERRITE	φ76x44.5	P2449101
07	INNER DRIVE RING	1	PPG	φ79.6x71	A2433786
06-1	BEARING	1	CARBON	φ32x28	P2469771
06	BEARING ASS'Y	1	ETFE	φ44x31	A2463788
05-1	RING	1	S45C	φ57.5x17.5	P2579332
05	OUTER DRIVE RING	1	ADC-12	φ117.5x119	P2509330
04-3	IMPELLER COVER	1	PPG	φ124x18	P2459052
04-2	MOUTH RING	1	RULON	φ52x7	P2429098
04-1	IMPELLER NOUNMENON	1	PPG	φ124x33	P2419051
21	HEXAGON SOCKET BOLT	4	SUS304	3/8" - 16x1"	
20	SET SCREW	2	S435	M6x10	P9116430
19	SET SCREW	2	S435	M8x10	P9119160
18	NUT	7	SUS304	M8	
17	HEXAGON HEAD BOLT	3	SUS304	M8x30	
16	HEXAGON SOCKET BOLT	6	SUS304	M8x70	
15	HEXAGON SOCKET BOLT	1	SUS304	M8x130	



APPROVED	CHECK	DESIGN	DR.BY	MDL. NAME	DWG. NAME	DWG. NO.
03 06 06	03 06 06	10 19 05	03 06 06 BECKY	NH-400PW-N-CV (NEMA)	CONSTRUCTION DRAWING	E2403522
UNIT INCH			SCALE 3:10			
EDITION 1			DR.BY 03 06 06 BECKY			

TPW
HONG YUAN

PAN WORLD CO., LTD.
パンワールド株式会社