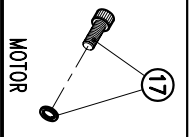
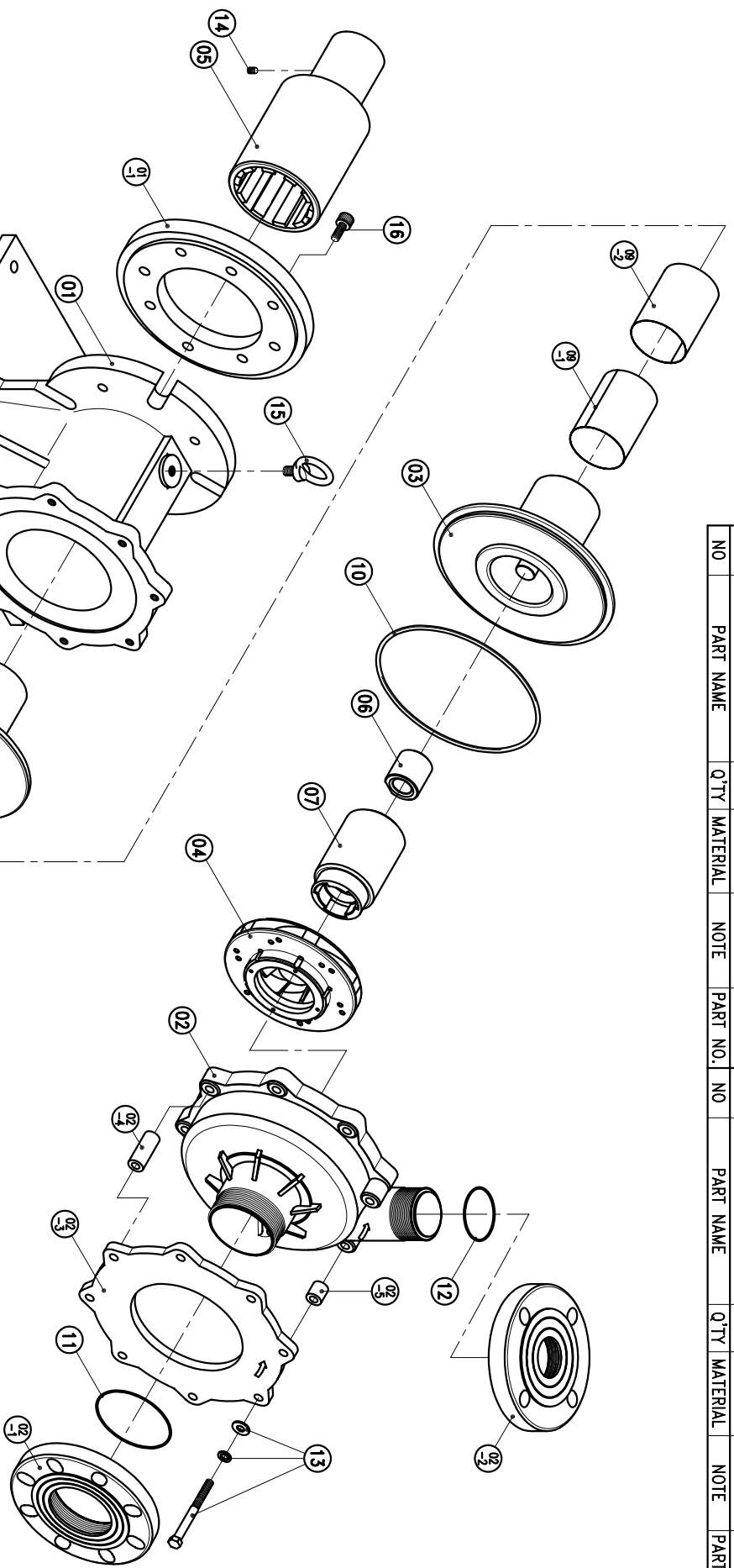


NO	PART NAME	Q'TY	MATERIAL	NOTE	PART NO.	NO	PART NAME	Q'TY	MATERIAL	NOTE	PART NO.					
02-5	SLEEVE	2	SUS304	φ20X21.5		09-2	PTFE BOARD	1	PTFE	281.8X122.9	17	HEXAGON SOCKET BOLT	4	SUS304	1/2"-13x 1/4"	
02-4	SLEEVE	6	SUS304	φ20X50		09-1	PTFE BOARD	1	PTFE	278.6X122.9		16	HEXAGON SOCKET BOLT	4	SUS304	M12X25
02-3	RELIEF PLATE	1	FC-20	φ261X12		09	PTFE BOARD	2	PTFE	LX122.9		15	EYEBOLT	4	SUS304	M12X20
02-2	FLANGE	1	ETFE	65A	1004511698	08	REAR CASING COVER ASS'Y	1	ETFE	φ210X137	1004912308	14	SET SCREW	2	S435	M8X10
02-1	FLANGE	1	ETFE	80A	1004511697	07	INNER DRIVE RING	1	ETFE	φ79.6X124		13	HEXAGON HEAD BOLT	8	SUS304	M10X110
02	FRONT CASING	1	ETFE	φ261X148	1004511691	06	BEARING	1	SIC		1004711300					
01-1	TRANSITION FLANGE	1	FC-20	φ254X21.6		05	OUTER DRIVE RING	1	FCD-45	φ122X245.1	1006911800	12	O. RING	1	FKM	G55
01	BRACKET	1	FC-20	φ264X226.5	100303104	04	IMPELLER ASS'Y	1	ETFE		1036810704	11	O. RING	1	FKM	G85
						03	REAR CASING	1	ETFE	φ240X141	1035211331	10	O. RING	1	FKM	G220

NO	PART NAME	Q'TY	MATERIAL	NOTE	PART NO.	NO	PART NAME	Q'TY	MATERIAL	NOTE	PART NO.
05	OUTER DRIVE RING	1	FCD-45	φ122X245.1	1006911800	12	O. RING	1	FKM	G55	1004711502
04	IMPELLER ASS'Y	1	ETFE		1036810704	11	O. RING	1	FKM	G85	1004711503
03	REAR CASING	1	ETFE	φ240X141	1035211331	10	O. RING	1	FKM	G220	1004711501



APPROVED	CHECK	DESIGN	DR.BY	MDL NAME	DWG. NAME	DWG. NO.
	05 03 05	03 13 02	05 03 05	NH-6515PW-F (NEMA)	DECOMPOSITION DRAWING	E3693048
UNIT	INCH	SCALE	3:20	EDITION	2	A3

TPW
HONG YUAN

PAN WORLD CO., LTD.
パンワールド株式会社