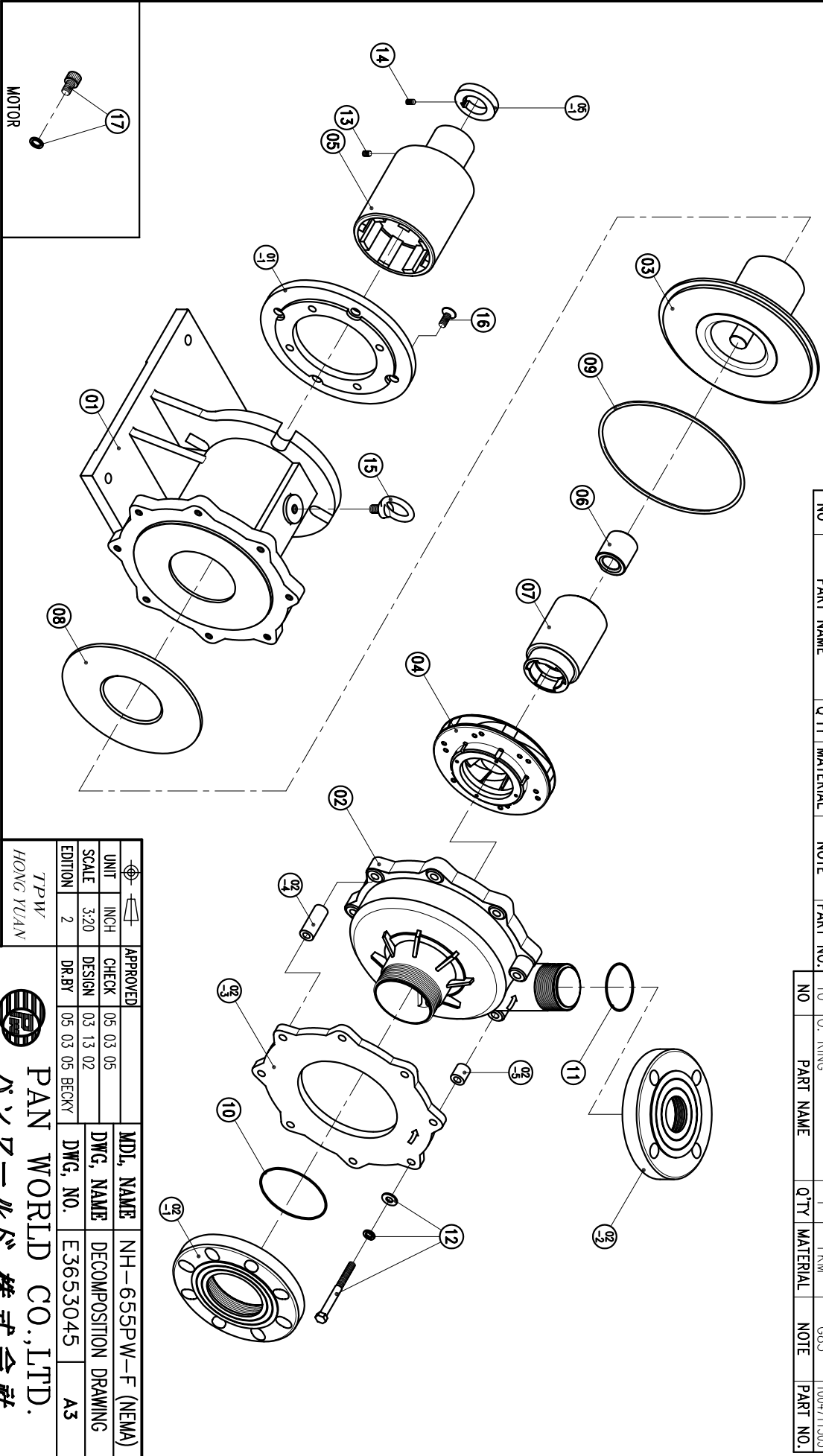


02-5	SLEEVE	2	SUS304	φ20X21.5		09	O. RING	1	FKM	G220	1003012777	17	HEXAGON SOCKET BOLT	4	SUS304	1/2"-13X3/4"	
02-4	SLEEVE	6	SUS304	φ20X50		08	BACK UP RING	1	SPCC	φ209X5.5	1003012100	16	w/φ SPRING WASHER	4	S435	M10X25	
02-3	RELIEF PLATE	1	FC-20	φ261X12		07	INNER DRIVE RING	1	ETFE	φ79.6X124	1004711300	15	EYEBOLT	4	SUS304	M12X20	
02-2	FLANGE	1	ETFE	65A			BEARING ASS'Y	1	CERAMIC RULON CARBON	φ44X46.5	1004710803 1004710802	14	SET SCREW	1	S435	M6X10	
02-1	FLANGE	1	ETFE	80A	1004511697						1004712002	13	SET SCREW	2	S435	M8X10	
02	FRONT CASING	1	ETFE	φ261X148	1004511691												
01-1	TRANSITION FLANGE	1	FC-20	φ228.6X18		05-1	RING	1	S435	φ48X9.8	1006611799	12	HEXAGON HEAD BOLT	8	SUS304	M10X110	
01	BRACKET	1	FC-20	φ261X208	1003013102	05	OUTER DRIVE RING	1	FCD-45	φ122X205	1003411001	11	O. RING	1	FKM	G55	1004711502
						04	IMPELLER ASS'Y	1	ETFE			10	w/φ SPRING WASHER	8	SUS304	M10X110	
						03	REAR CASING	1	ETFE	φ240X141							

NO	PART NAME	Q'TY	MATERIAL	NOTE	PART NO.
03	REAR CASING	1	ETFE	φ240X141	1033411001
04	IMPELLER ASS'Y	1	ETFE		
05	OUTER DRIVE RING	1	FCD-45	φ122X205	1006611799
05-1	RING	1	S435	φ48X9.8	1006611799
06	BEARING ASS'Y	1	CERAMIC RULON CARBON	φ44X46.5	1004710803 1004710802
07	INNER DRIVE RING	1	ETFE	φ79.6X124	1004711300
08	BACK UP RING	1	SPCC	φ209X5.5	1003012100
09	O. RING	1	FKM	G220	1003012777



APPROVED	CHECK	DESIGN	DR.BY	MDL. NAME	DWG. NAME	DWG. NO.
05 03 05	05 03 05	03 13 02	05 03 05 BECKY	NH-655PW-F (NEMA)	DECOMPOSITION DRAWING	E3653045
UNIT	INCH	SCALE	EDITION			
		3:20	2			

TPW
HONG YUAN

PAN WORLD CO., LTD.
パンワールド株式会社