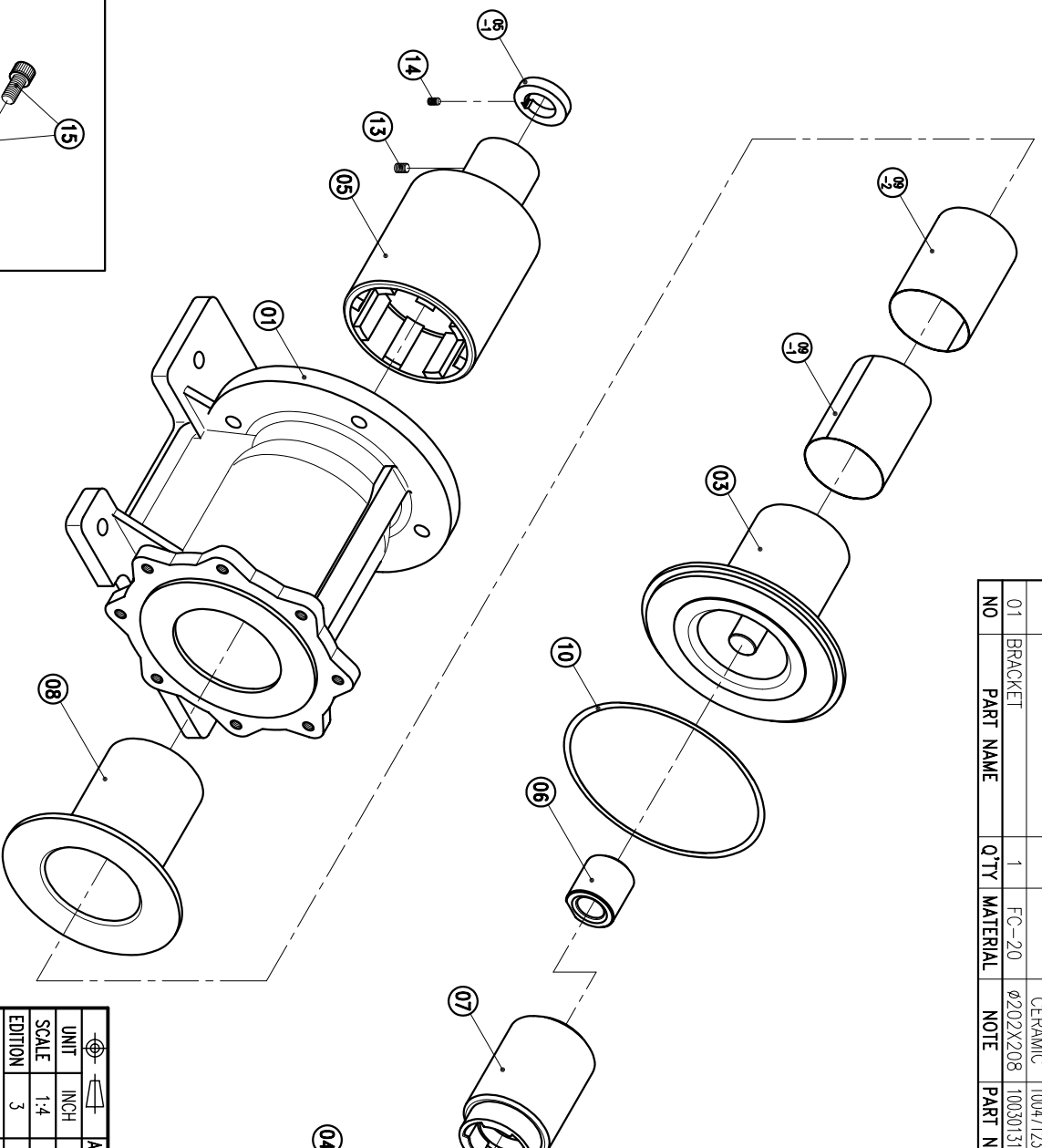


NO	PART NAME	QTY	MATERIAL	NOTE	PART NO.
05-1	RING	1	S45C	φ48X9.8	
05	OUTER DRIVE RING	1	FCD-45	φ122X205	100351800
04	IMPELLER ASS'Y	1	ETFE		1004911314
					SIC 1004710201
03	REAR CASING	1	ETFE		CERAMIC 1004710200
02	FRONT CASING	1	ETFE		SIC 1004712390
					CERAMIC 1004712300
01	BRACKET	1	FC-20	φ202X208	1003013101

NO	PART NAME	QTY	MATERIAL	NOTE	PART NO.
15	HEAXGON SOCKET BOLT	4	SUS304	1/2" - 13X1"	
14	w/t SPRING WASHER	1	S435	M6X10	
13	SET SCREW	2	S435	M8X10	
12	HEAXGON HEAD BOLT	5	SUS304	M10X35	
	w/t PLAIN WASHER				
11	HEAXGON HEAD BOLT	3	SUS304	M10X65	
	w/t PLAIN WASHER				
10	O. RING	1	FKM	G175	1004711500
09-2	PTFE BOARD	1	PTFE	281.8X122.9	
09-1	PTFE BOARD	1	PTFE	278.6X122.9	
09	PTFE BOARD	2	PTFE	LX122.9	
08	REAR CASING COVER ASS'Y	1	ETFE	φ164X137	1004912308
07	INNER DRIVE RING	1	ETFE	φ79.6X124	
					SIC 1004711300
					CERAMIC 1004710803
06	BEARING ASS'Y	1	FLUON	φ44X46.5	1004710802
			CARBON		1004711200



G : 1 1/2" X 2"
NPT : 1 1/2" X 2"

APPROVED	CHECK	SCALE	EDITION	MDL. NAME	DWG. NAME	DWG. NO.	DR.BY
	05 03 05	1:4	3	NH-405PW-F(NEMA)	DECOMPOSITION DRAWING	E3453051	05 03 05 BECKY

TPW
HONG YUAN



PAN WORLD CO., LTD.
パンワールド株式会社

A3