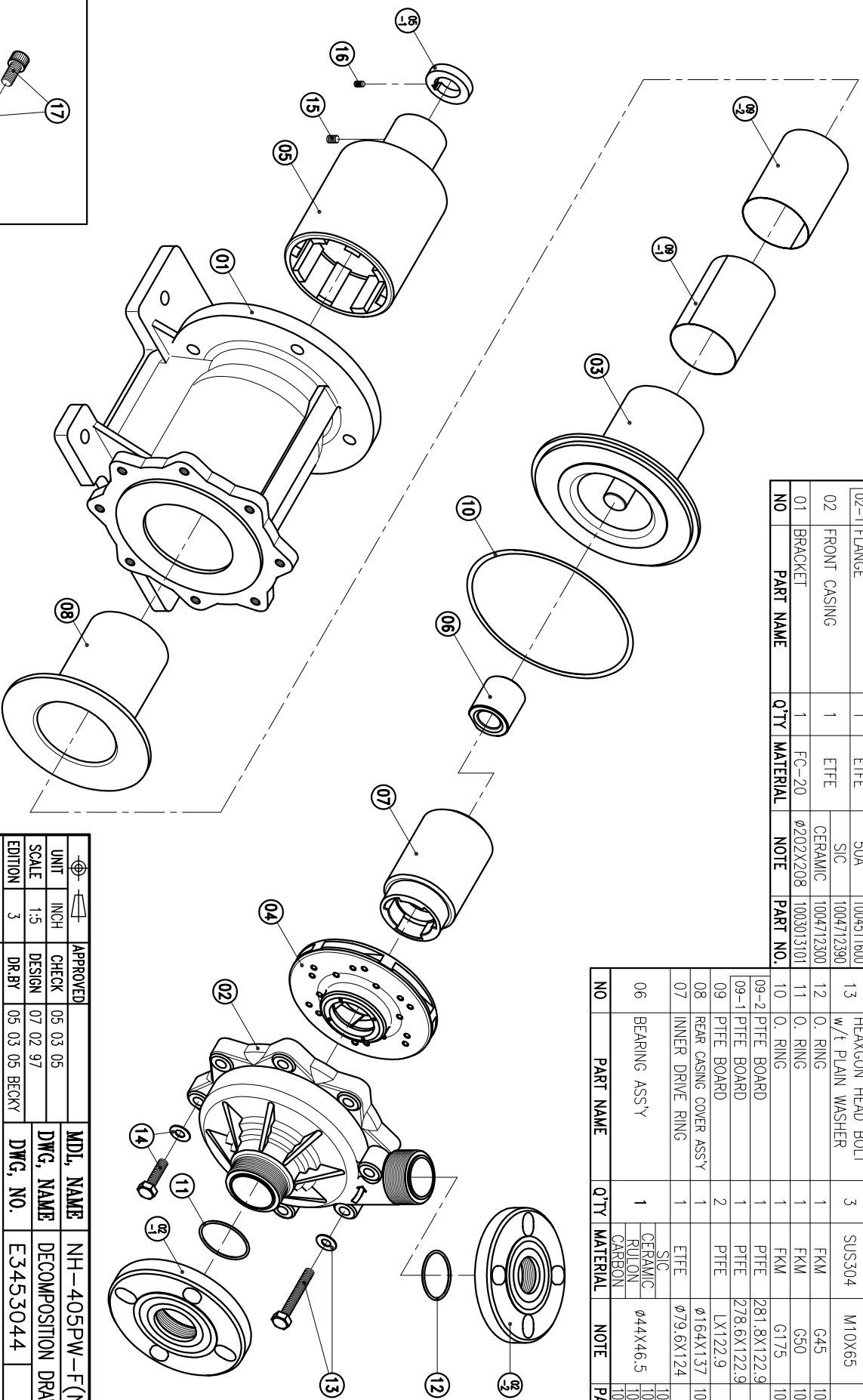


NO	PART NAME	Q'TY	MATERIAL	NOTE	PART NO.
05-1	RING	1	S45C	φ48X9.8	
05	OUTER DRIVE RING	1	FCD-45	φ122X205	1003511800
04	IMPELLER ASS'Y	1	ETFE		1004911314
03	REAR CASING	1	ETFE		1004710201
02-2	FLANGE	1	ETFE	CERAMIC	1004710200
02-1	FLANGE	1	ETFE	40A	1004711900
02	FRONT CASING	1	ETFE	50A	1004511600
01	BRACKET	1	ETFE	1004712390	1004712300
			FC-20	CERAMIC	1004712300
			φ202X208		1003013101

NO	PART NAME	Q'TY	MATERIAL	NOTE	PART NO.
17	HEAXGON SOCKET BOLT	4	SUS304	1/2" - 13X1"	
16	w/t SPRING WASHER	1	S435	M6X10	
15	SET SCREW	2	S435	M8X10	
14	HEAXGON HEAD BOLT	5	SUS304	M10X35	
13	w/t PLAIN WASHER	3	SUS304	M10X65	
12	HEAXGON HEAD BOLT	1	FKM	G45	1004512700
11	O. RING	1	FKM	G50	1004711600
10	O. RING	1	FKM	G175	1004711500
09-2	PTFE BOARD	1	PTFE	281.8X122.9	
09-1	PTFE BOARD	1	PTFE	278.6X122.9	
08	PTFE BOARD	2	PTFE	LX122.9	
07	REAR CASING COVER ASS'Y	1		φ164X137	1004912308
06	INNER DRIVE RING	1	ETFE	φ79.6X124	
			SIC		1004711300
			CERAMIC		1004710803
			ROLON		1004710802
			CARBON		1004711200
06	BEARING ASS'Y	1		φ44X46.5	



APPROVED	CHECK	MDL. NAME	NH-405PW-F(NEMA)
05 03 05	05 03 05	DWG. NAME	DECOMPOSITION DRAWING
07 02 97	07 02 97	DWG. NO.	E3453044
05 03 05 BECKY	05 03 05 BECKY		A3

TPW
HONG YUAN



PAN WORLD CO., LTD.
パンワールド株式会社