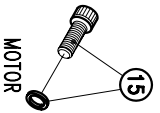
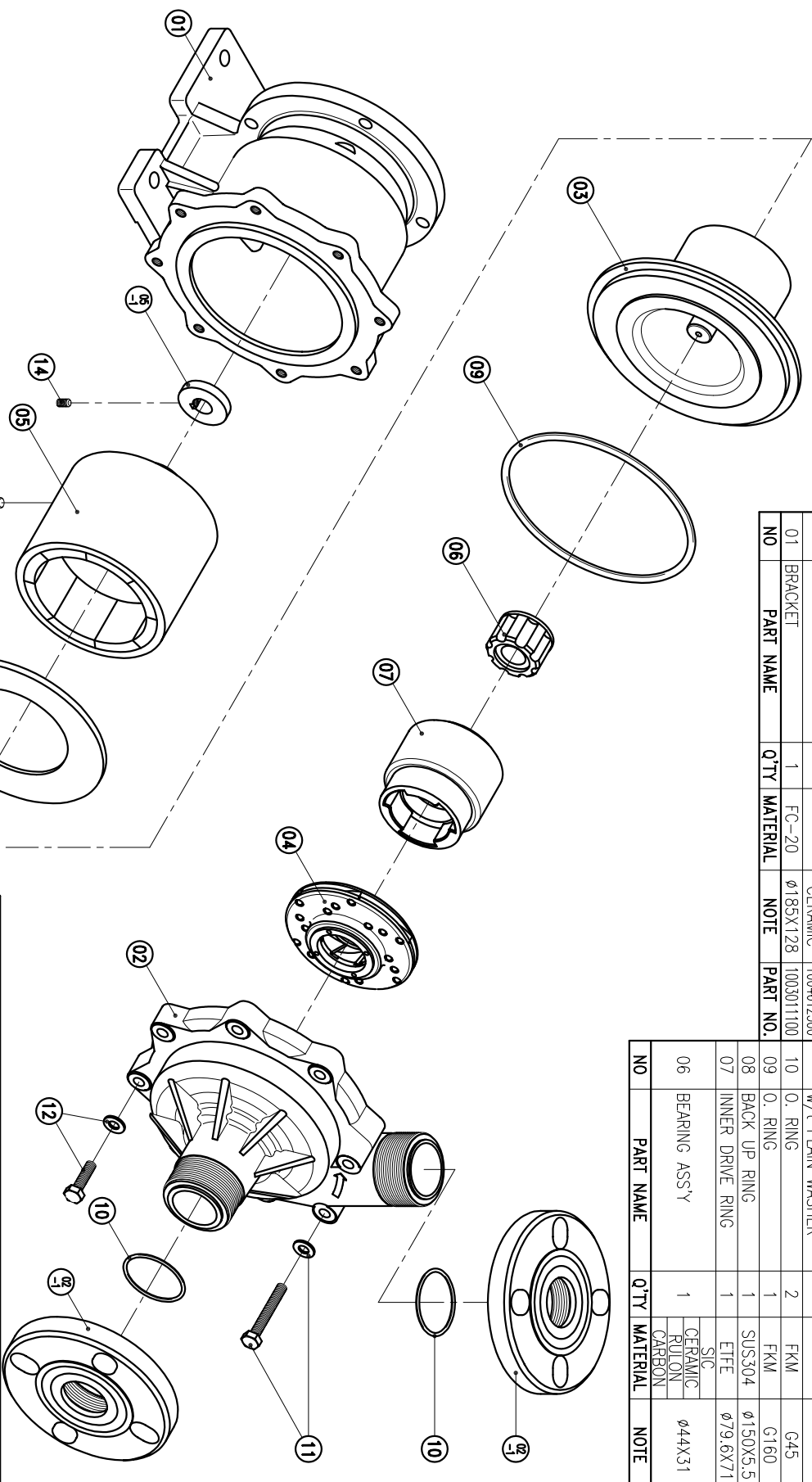


NO	PART NAME	Q'TY	MATERIAL	NOTE	PART NO.
05-1	RING	1	S45C	φ40X7.5	
05	OUTER DRIVE RING	1	FCD-45	φ12.3X127.5	100311800
04	IMPELLER ASS'Y	1	ETFE		100461314
03	REAR CASING	1	ETFE		1004610201
02-1	FLANGE	2	ETFE	40A	1004511160
02	FRONT CASING	1	ETFE		1004612390
01	BRACKET	1	FC-20	φ185X128	1003011100

NO	PART NAME	Q'TY	MATERIAL	NOTE	PART NO.
15	HEAXGON SOCKET BOLT	4	SUS304	3/8" - 16X1"	
14	w/t SPRING WASHER	1	S435	M6X10	
13	SET SCREW	2	S435	M8X10	
12	HEAXGON HEAD BOLT	6	SUS304	M8X30	
11	w/t PLAIN WASHER	2	SUS304	M8X35	
10	HEAXGON HEAD BOLT	2	SUS304	M8X35	
09	0. RING	1	FKM	G45	1004512700
08	BACK UP RING	1	SUS304	φ150X5.5	1004511500
07	INNER DRIVE RING	1	ETFE	φ79.6X71	
06	BEARING ASS'Y	1	CERAMIC RULON CARBON	φ44X31	1004510814 1004510813 1004510812 1004510811



APPROVED	CHECK	DESIGN	DR.BY	MDL. NAME	DWG. NAME	DWG. NO.	EDITION
04.02.05	07.10.97	04.02.05	BECKY	NH-401PW-F(NEMA)	DECOMPOSITION DRAWING	E3413057	3

TPW
 HONG-YUAN

PAN WORLD CO., LTD.
パンワールド株式会社