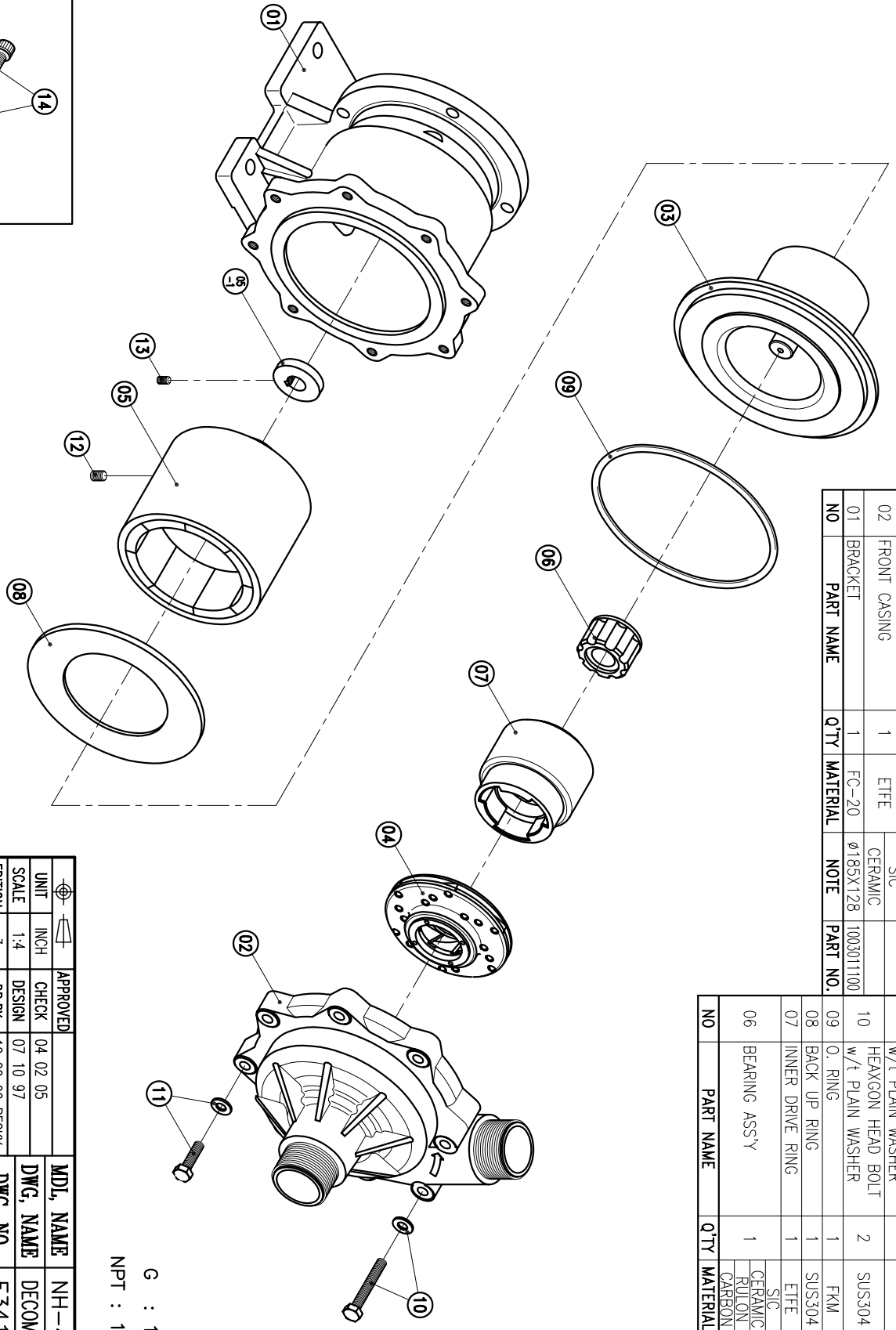


NO	PART NAME	Q'TY	MATERIAL	NOTE	PART NO.
05-1	RING	1	S45C	φ40X7.5	
05	OUTER DRIVE RING	1	FCD-45	φ12.3X127.5	100311800
04	IMPELLER ASS'Y	1	ETFE		100461314
03	REAR CASING	1	ETFE		1004610201
02	FRONT CASING	1	ETFE		1004610200
01	BRACKET	1	FC-20	φ185X128	100301100

NO	PART NAME	Q'TY	MATERIAL	NOTE	PART NO.
14	HEAXGON SOCKET BOLT	4	SUS304	3/8" - 16X1"	
13	w/t SPRING WASHER	1	S435	M6X10	
12	SET SCREW	2	S435	M8X10	
11	HEAXGON HEAD BOLT	6	SUS304	M8X30	
10	w/t PLAIN WASHER	2	SUS304	M8X55	
09	HEAXGON HEAD BOLT	1	FKM	G160	1004511500
08	BACK UP RING	1	SUS304	φ150X5.5	1003011300
07	INNER DRIVE RING	1	ETFE	φ79.6X71	
06	BEARING ASS'Y	1	CERAMIC FLUON CARBON	φ44X31	1004510814 1004510813 1004510812 1004510811



G : 1 1/2" X 1 1/2"
NPT : 1 1/2" X 1 1/2"

APPROVED	CHECK	MDL NAME	NH-401PW-F(NEMA)
04.02.05	07.10.97	DWG. NAME	DECOMPOSITION DRAWING
07.10.97	12.20.02	DWG. NO.	E3413027
07.10.97	12.20.02	DR.BY	BECKY
07.10.97	12.20.02	EDITION	3
07.10.97	12.20.02	SCALE	1-4
07.10.97	12.20.02	UNIT	INCH

TPW
HONG YUAN



PAN WORLD CO., LTD.
パンワールド株式会社