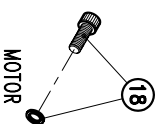
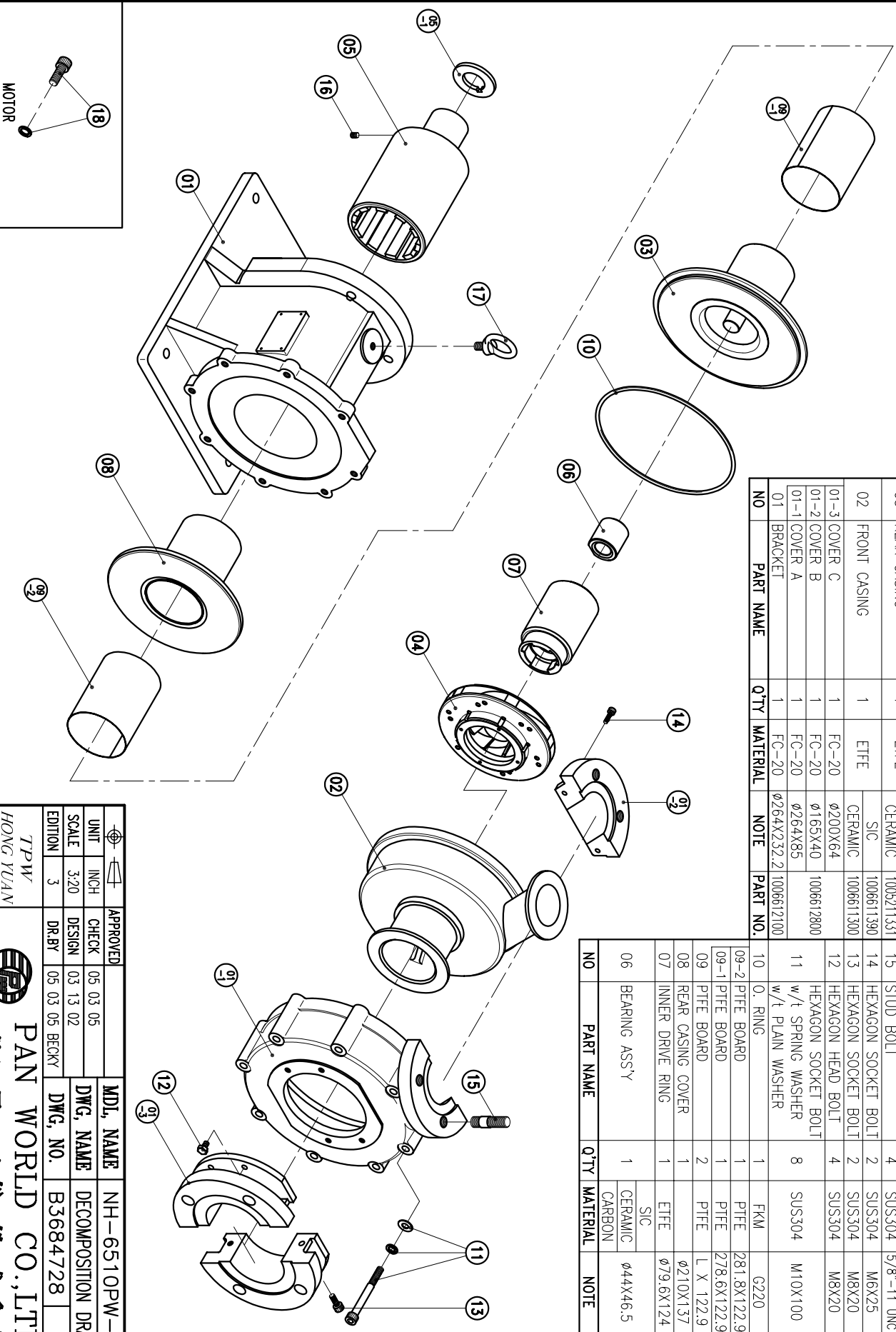


NO	PART NAME	QTY	MATERIAL	NOTE	PART NO.
05-1	RING	1	S45C	φ65X5.7	
05	OUTER DRIVE RING	1	FCD-45	φ122X22.3.5	100671800
04	IMPELLER ASS'Y	1	ETFE		1006617040
03	REAR CASING	1	ETFE		1005218331
02	FRONT CASING	1	ETFE		100521331
01-3	COVER C	1	FC-20	φ200X64	100661390
01-2	COVER B	1	FC-20	φ165X40	100661300
01-1	COVER A	1	FC-20	φ264X85	1006612800
01	BRACKET	1	FC-20	φ264X232.2	1006612100

NO	PART NAME	QTY	MATERIAL	NOTE	PART NO.
18	HEXAGON SOCKET BOLT w/1 SPRING WASHER	4	SUS304	1/2"-13X1 1/4"	
17	EYE BOLT	1	S41C	M12	
16	SET SCREW	2	S435	M8X10	
15	STUD BOLT	4	SUS304	5/8"-11 UNC	
14	HEXAGON SOCKET BOLT	2	SUS304	M6X25	
13	HEXAGON SOCKET BOLT	2	SUS304	M8X20	
12	HEXAGON HEAD BOLT	4	SUS304	M8X20	
11	HEXAGON SOCKET BOLT w/1 SPRING WASHER w/1 PLAIN WASHER	8	SUS304	M10X100	
10	O. RING	1	FKM	G220	1006511500
09-2	PTFE BOARD	1	PTFE	281.8X122.9	
09-1	PTFE BOARD	1	PTFE	278.6X122.9	
09	PTFE BOARD	2	PTFE	L X 122.9	
08	REAR CASING COVER	1	PTFE	φ210X137	1005210331
07	INNER DRIVE RING	1	ETFE	φ79.6X124	
06	BEARING ASS'Y	1	CERAMIC CARBON	φ44X46.5	1004711300 1004710803 1004711200



APPROVED	CHECK	DESIGN	DR.BY	MDL. NAME	DWG. NAME	DWG. NO.
	05 03 05	03 13 02	05 03 05 BECKY	NH-6510PW-C(NEMA)	DECOMPOSITION DRAWING	B3684728

TPW
 HONG YUAN

PAN WORLD CO., LTD.
パンワールド株式会社