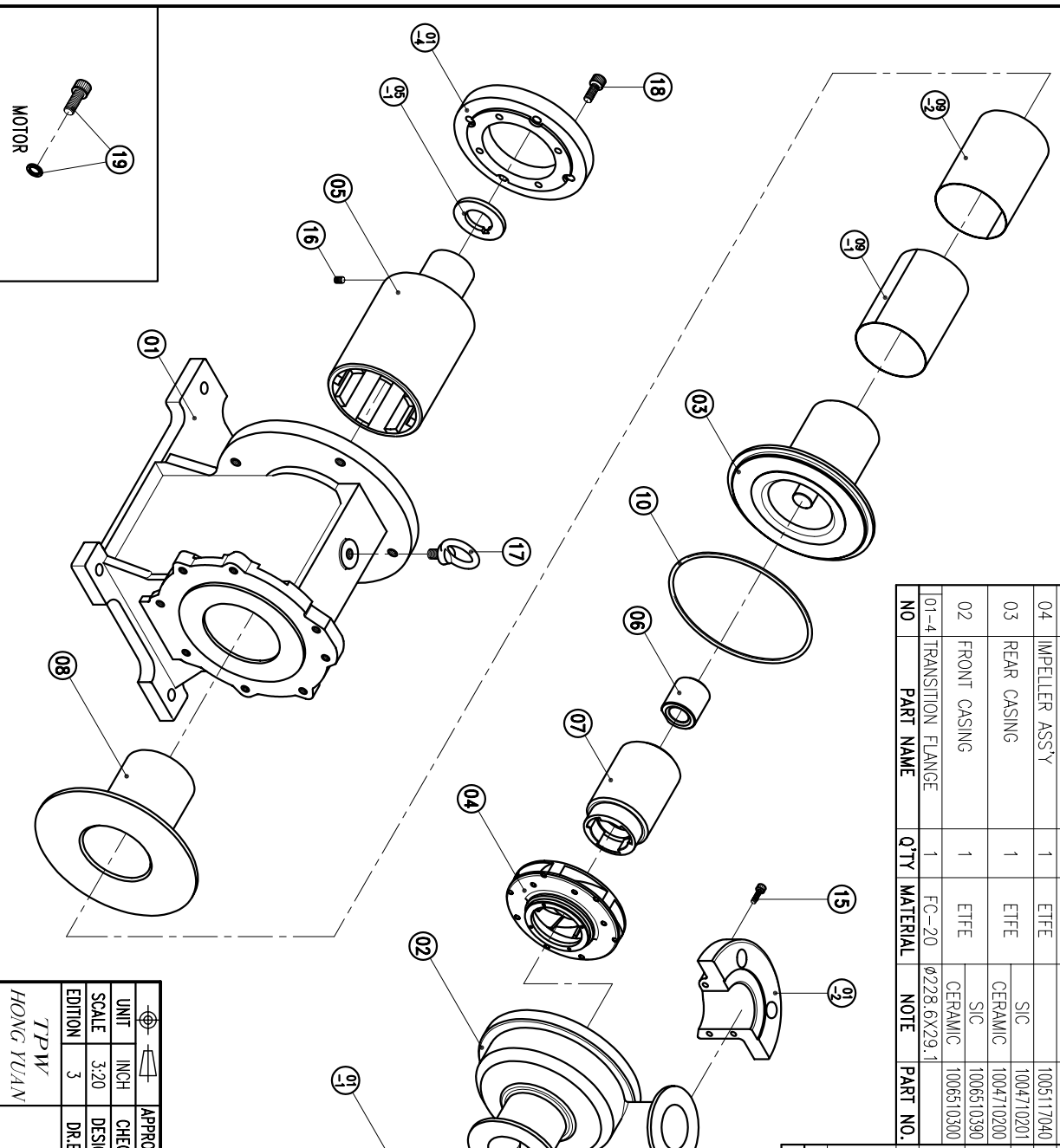


NO	PART NAME	Q'TY	MATERIAL	NOTE	PART NO.
01-3	COVER C	1	FC-20	φ185X66.5	
01-2	COVER B	1	FC-20	φ165X23	100651800
01-1	COVER A	1	FC-20	φ215X73	
01	BRACKET	1	FC-20	φ215X208	1006512100

NO	PART NAME	Q'TY	MATERIAL	NOTE	PART NO.
07	INNER DRIVE RING	1	ETFE	φ79.6X124	
06	BEARING ASS'Y	1	SIC		1004711300
			CERAMIC	φ44X46.5	1004710803
			RULON		1004710802
			CARBON		1004711200
05-1	RING	1	S45C	φ65X5.7	
05	OUTER DRIVE RING	1	FCD-45	φ122X223.5	1003511802
04	IMPELLER ASS'Y	1	ETFE		1005117040
03	REAR CASING	1	ETFE		1004710201
02	FRONT CASING	1	ETFE		1004710200
			SIC		1006510390
01-4	TRANSITION FLANGE	1	FC-20	φ228.6X29.1	

NO	PART NAME	Q'TY	MATERIAL	NOTE	PART NO.
19	HEXAGON SOCKET BOLT	4	SUS304	1/2"-13x1 1/4"	
18	w/t SPRING WASHER	4	SUS304	M10X25	
17	HEXAGON SOCKET BOLT	1	S41C	M12	
16	EYEBOLT	1	S41C	M8X10	
15	SET SCREW	2	S435	M8X10	
14	HEXAGON SOCKET BOLT	3	SUS304	M6X20	
13	HEXAGON SOCKET BOLT	2	SUS304	M6X16	
12	HEXAGON SOCKET BOLT	4	SUS304	M8X20	
11	HEXAGON SOCKET BOLT	7	SUS304	M10X50	
10	w/t SPRING WASHER	1	SUS304	M10X85	
09-2	PTFE BOARD	1	EKM	G175	1004711500
09-1	PTFE BOARD	1	PTFE	281.8X122.9	
08	REAR CASING COVER	2	PTFE	278.6X122.9	
				L X 122.9	
				φ162X137	1004912308



UNIT	INCH	CHECK	05	03	05	MDL NAME	NH-507PW-C (NEMA)
SCALE	3:20	DESIGN	07	05	97	DWG. NAME	DECOMPOSITION DRAWING
EDITION	3	DR.BY	05	03	05	DWG. NO.	B3574737
TPW		APPROVED				A3	
HONG YUAN						PAN WORLD CO.,LTD.	
						パナワールド 株式会社	