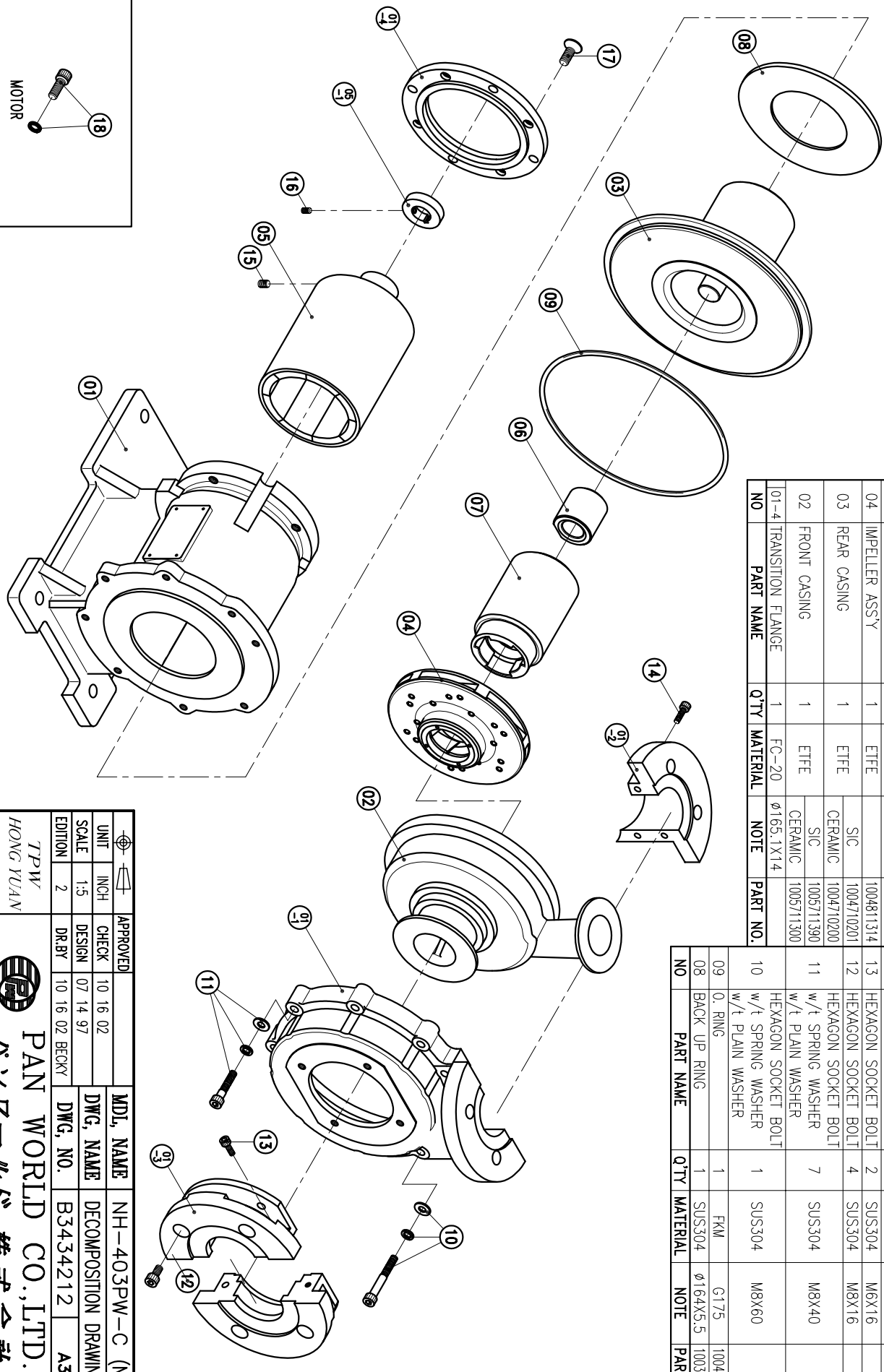


| NO   | PART NAME | Q'TY | MATERIAL | NOTE       | PART NO.   |
|------|-----------|------|----------|------------|------------|
| 01-3 | COVER C   | 1    | FC-20    | φ153X45    |            |
| 01-2 | COVER B   | 1    | FC-20    | φ127X23    | 100571800  |
| 01-1 | COVER A   | 1    | FC-20    | φ210X59.5  |            |
| 01   | BRACKET   | 1    | FC-20    | φ210X186.5 | 1004519102 |

| NO   | PART NAME         | Q'TY | MATERIAL | NOTE       | PART NO.   |
|------|-------------------|------|----------|------------|------------|
| 07   | INNER DRIVE RING  | 1    | ETFE     | φ79.6X124  |            |
| 06   | BEARING ASS'Y     |      | SIC      |            | 1004711300 |
|      |                   |      | CERAMIC  |            | 1004710803 |
|      |                   |      | PULON    | φ44X46.5   | 1004710802 |
| 05-1 | RING              | 1    | S45C     | φ44X10     | 1004711200 |
| 05   | OUTER DRIVE RING  | 1    | FCD-45   | φ118X183.5 | 1003311800 |
| 04   | IMPELLER ASS'Y    | 1    | ETFE     |            | 1004811314 |
| 03   | REAR CASING       | 1    | ETFE     |            | 1004710201 |
| 02   | FRONT CASING      |      | CERAMIC  |            | 1004710200 |
|      |                   |      | SIC      |            | 1005711390 |
| 01-4 | TRANSITION FLANGE | 1    | FC-20    | φ165.1X14  | 1005711300 |

| NO | PART NAME  | Q'TY | MATERIAL | NOTE       | PART NO.   |
|----|--|------|----------|------------|------------|
| 18 | HEXAGON SOCKET BOLT<br>w/t SPRING WASHER                     | 4    | SUS304   | 3/8"-16X1" | 1004711500 |
| 17 | COUNTER SUNK HEAD BOLT                                       | 4    | S435     | M10X20     | 1003013300 |
| 16 | SET SCREW  | 2    | S435     | M6X10      |            |
| 15 | SET SCREW  | 2    | S435     | M8X10      |            |
| 14 | HEXAGON SOCKET BOLT  | 3    | SUS304   | M6X20      |            |
| 13 | HEXAGON SOCKET BOLT  | 2    | SUS304   | M6X16      |            |
| 12 | HEXAGON SOCKET BOLT  | 4    | SUS304   | M8X16      |            |
| 11 | HEXAGON SOCKET BOLT<br>w/t SPRING WASHER<br>w/t PLAIN WASHER | 7    | SUS304   | M8X40      |            |
| 10 | HEXAGON SOCKET BOLT<br>w/t SPRING WASHER                     | 1    | SUS304   | M8X60      |            |
| 09 | O. RING  | 1    | FKM      | G175       | 1004711500 |
| 08 | BACK UP RING   | 1    | SUS304   | φ164X5.5   | 1003013300 |



| UNIT    | INCH | CHECK  | APPROVED       | MDL. NAME | NH-403PW-C (NEMA)     |
|---------|------|--------|----------------|-----------|-----------------------|
| SCALE   | 1:5  | DESIGN | 07 14 97       | DWG. NAME | DECOMPOSITION DRAWING |
| EDITION | 2    | DR.BY  | 10 16 02 BECKY | DWG. NO.  | B3434212              |
|         |      |        |                |           | A3                    |

TPW  
HONG YUAN

PAN WORLD CO., LTD.  
パナワールド 株式会社