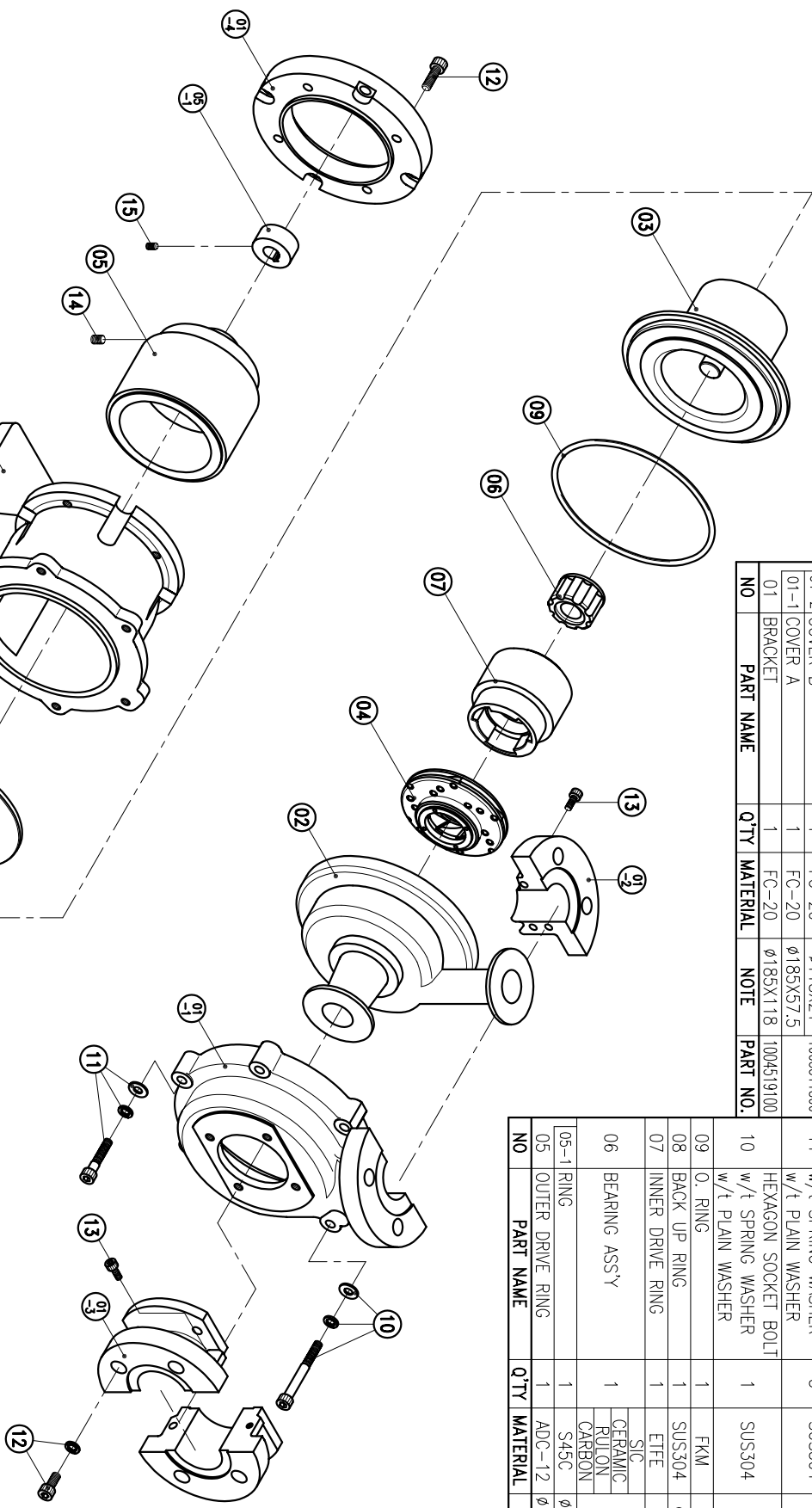


NO	PART NAME	Q'TY	MATERIAL	NOTE	PART NO.
04	IMPELLER ASS'Y	1	ETFE		1004511314
03	REAR CASING	1	ETFE	SIC	1004510201
02	FRONT CASING	1	ETFE	CERAMIC	1004510200
01-4	TRANSITION FLANGE	1	FC-20	SIC	1005511390
01-3	COVER C	1	FC-20		1005511390
01-2	COVER B	1	FC-20		1005511890
01-1	COVER A	1	FC-20		1005511300
01	BRACKET	1	FC-20		1004519100

NO	PART NAME	Q'TY	MATERIAL	NOTE	PART NO.
16	HEXAGON SOCKET BOLT w/t SPRING WASHER	4	SUS304	3/8"-16x1"	
15	SET SCREW	2	S435	M6X10	
14	SET SCREW	2	S435	M8X10	
13	HEXAGON SOCKET BOLT	5	SUS304	M6X16	
12	HEXAGON SOCKET BOLT	8	SUS304	M8X20	
11	HEXAGON SOCKET BOLT w/t SPRING WASHER	5	SUS304	M8X40	
10	HEXAGON SOCKET BOLT w/t SPRING WASHER	1	SUS304	M8X70	
09	O. RING	1	FKM	G150	1004511601
08	BACK UP RING	1	SUS304	φ140X5.5	1003010300
07	INNER DRIVE RING	1	ETFE	φ79.6X71	
06	BEARING ASS'Y	1	CERAMIC RULON CARBON	φ44X31	1004510814 1004510813 1004510812 1004510811
05-1	RING	1	S45C	φ37.5X17.5	
05	OUTER DRIVE RING	1	ADC-12	φ117.5X119	1003011800



UNIT	INCH	CHECK	APPROVED	MDL. NAME	NH-250PW-C (NEMA)
SCALE	1:5	DESIGN	07 14 97	DWG. NAME	DECOMPOSITION DRAWING
EDITION	2	DR.BY	10 16 02 BECKY	DWG. NO.	B3254680
TPW HONG YUAN				PAN WORLD CO.,LTD. パナワールド株式会社	