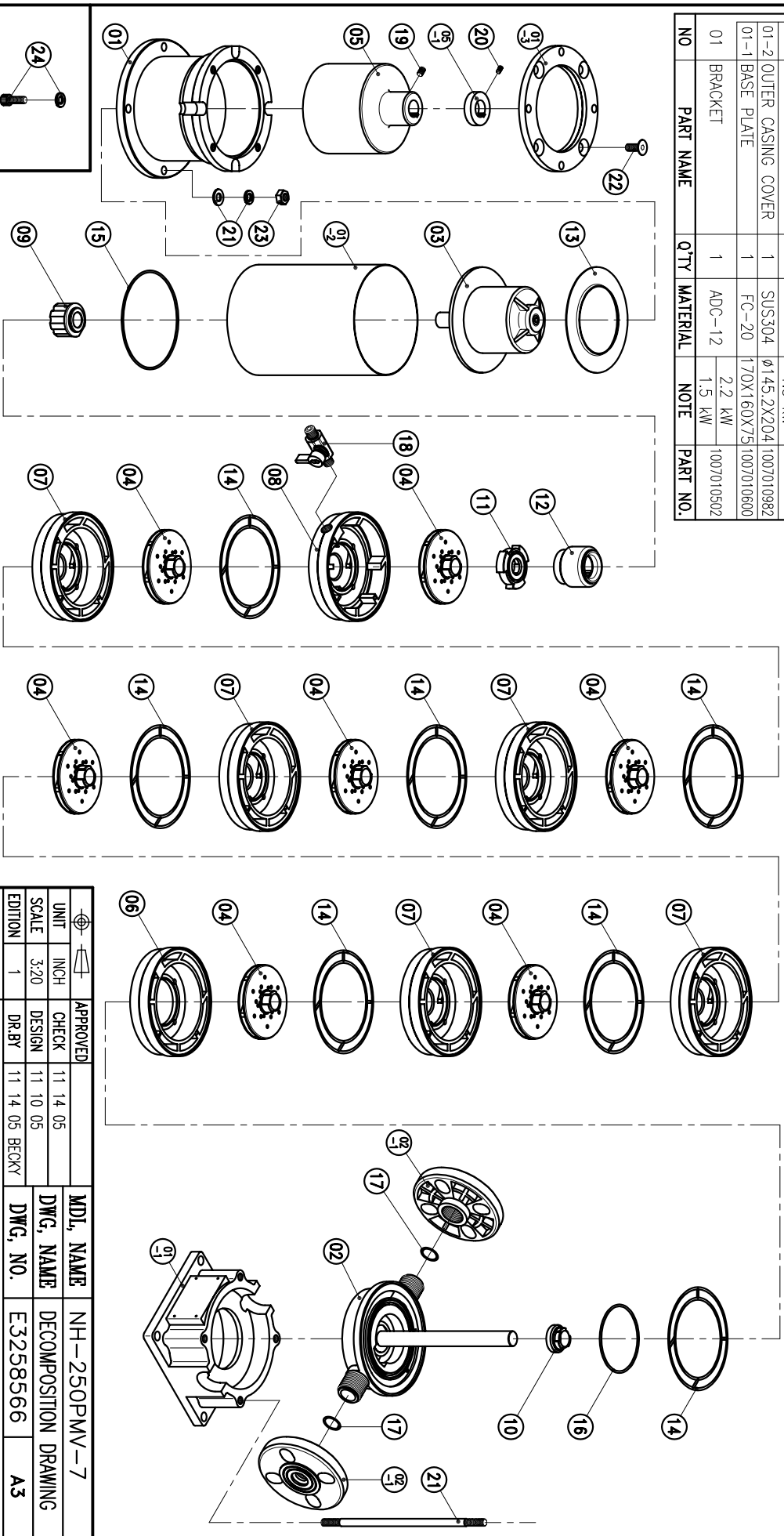


07	MID CASING	5	PPS	φ143X40	1007010420	16	O. RING	1	FKM	G30	1007012701	24	HEXAGON SOCKET BOLT	4	SUS304	3/8" - 16X1"	
06	FRIST CASING	1	PPS	φ143X32.5	1007010421	15	O. RING	1	FKM	G130	1007012700	23	w/ t S.W.(3/8")(MOTOR)	4	SUS304	M10	
05-1	RING	1	S45C	2.2 kW		14	CHAMBER GASKET	7	FKM	φ129.4Xφ3.1	1007010300	22	COUNTER SUNK HEAD BOLT	4	S45C	M8X25	
05	OUTER DRIVE RING	1	FCD-45	2.2 kW	1007010720	13	BACK UP RING	1	SPCC	φ139X4	1007010300	21	STUD BLOT	4	SUS304	M10X260	
04	IMPELLER ASS'Y	7	PPS	1.5 kW	1007010410	12	INNER DRIVE RING	1	Nd-Fe-B	2.2 kW	1007112353	20	SET SCREW	2	S45C	M6X10	
03	REAR CASING ASS'Y	1	PPS	φ139X93.3	1007010202	11	CLUTCH	1	PPS	φ58X12.5	1007010400	19	SET SCREW	2	S45C	M8X10	
02-1	FLANGE	2	PPG	φ122X31	1001007100	10	FRONT THRUST BEARING	1	PPS	φ56X18	1003010811	18	EXHAUST VALVE	2	S45C		
02	FRONT CASING	1	PPS	210X48	1007012302	09	BEARING ASS'Y	1	ETFE	φ44X31	1003010812	17	O. RING	2	FKM	P20	
01-3	TRANSITION FLANGE	1	FC-20	2.2 kW		08	LAST CASING	1	PPS	φ143X40	1007010422	16		2	FKM	1001301300	
01-2	OUTER CASING COVER	1	SUS304	φ145.2X204	1007010982	NO	PART NAME	Q'TY	MATERIAL	NOTE	PART NO.	NO	PART NAME	Q'TY	MATERIAL	NOTE	PART NO.
01-1	BASE PLATE	1	FC-20	170X160X75	1007010600	NO	PART NAME	Q'TY	MATERIAL	NOTE	PART NO.	NO	PART NAME	Q'TY	MATERIAL	NOTE	PART NO.
01	BRACKET	1	ADC-12	2.2 kW	1007010502	NO	PART NAME	Q'TY	MATERIAL	NOTE	PART NO.	NO	PART NAME	Q'TY	MATERIAL	NOTE	PART NO.



APPROVED	11 14 05	MDL NAME	NH-250PMV-7
CHECK	11 10 05	DWG. NAME	DECOMPOSITION DRAWING
DESIGN	11 10 05	DWG. NO.	E3258566
DR.BY	11 14 05 BECKY		A3

TPW
 HONG YUAN

PAN WORLD CO.,LTD.
パンワールド株式会社

MOTOR FLANGE