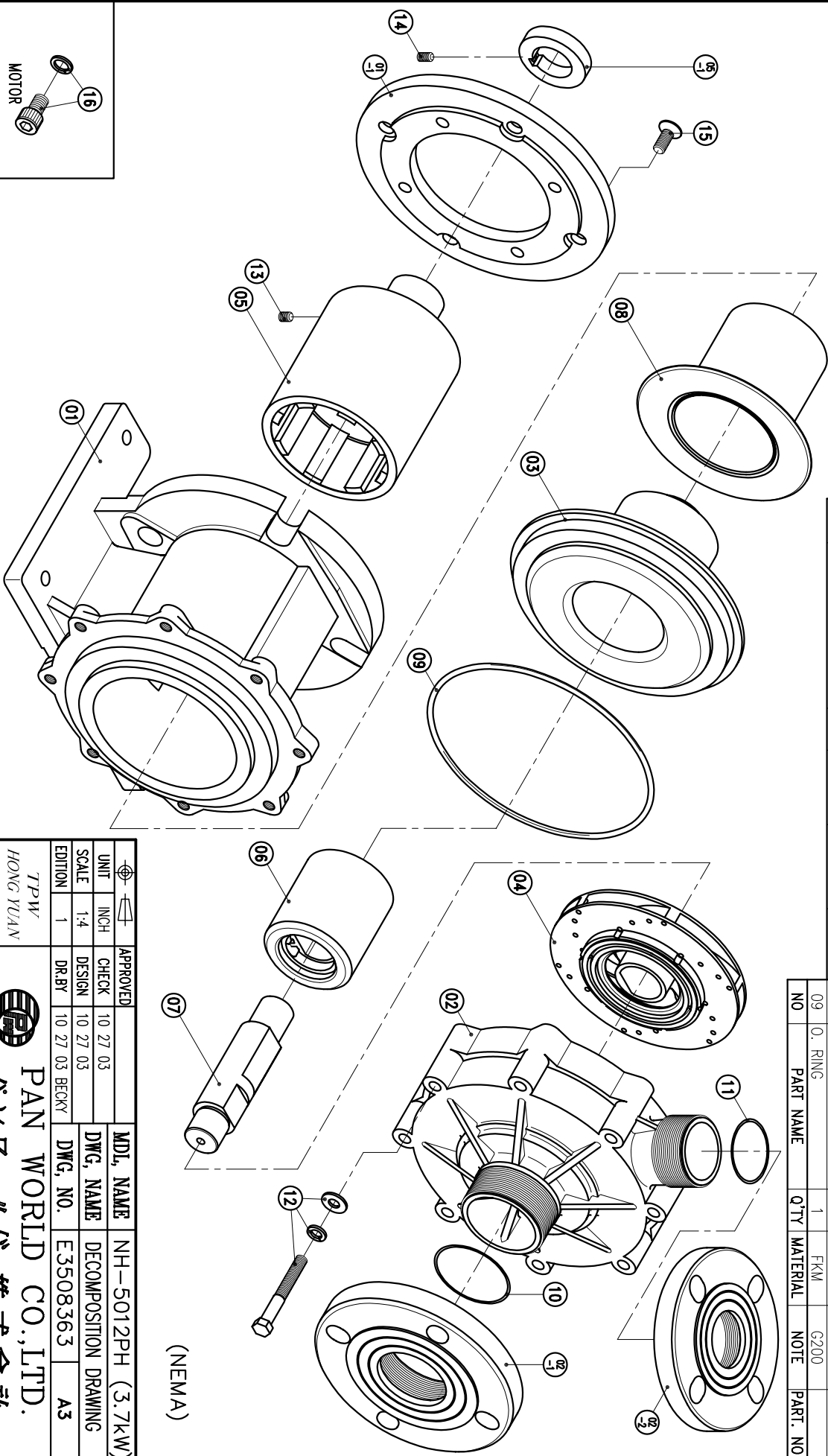


02-2	FLANGE	1	PPG	50A			
02-1	FLANGE	1	PPG	65A			
02	FRONT CASING	1	PPS	BEARING-CARBON THRUST PAD-SIC			
01-1	TRANSITION FLANGE	1	FC-20	φ228.6X18			
01	BRACKET	1	FC-20	φ226.5X183.5			

08	REAR CASING COVER	1	SUS304	φ158X121			
07	SPINDLE	1	CERAMIC	φ38X156			
06	MAGNET CAPSULE	1	PPG	φ79.6X92			
05-1	RING	1	S45C	φ48X9.8			
05	DRIVE MAGNET	1	FCD-45	φ122X179			
04	IMPELLER ASS'Y	1	PPS	5012PH			
03	REAR CASING	1	PPS	CARBON			

16	HEXAGON SOCKET BOLT	4	SUS304	1/2"-13X3/4"			
15	COUNTER SUNK HEAD BOLT	4	S435	M10X25			
14	SET SCREW	1	S435	M6X10			
13	SET SCREW	2	S435	M8X10			
12	HEXAGON HEAD BOLT w/1 SPRING WASHER	8	SUS304	M10X80			
11	O. RING	1	FKM	S50			
10	O. RING	1	FKM	S65			
09	O. RING	1	FKM	G200			



(NEMA)

APPROVED	CHECK	10 27 03	MDL NAME	NH-5012PH (3.7KW)
DESIGN	SCALE	1-4	DWG. NAME	DECOMPOSITION DRAWING
DR.BY	EDITION	1	DWG. NO.	E3508363
				A3

TPW
HONG YUAN



PAN WORLD CO., LTD.
パンワールド株式会社