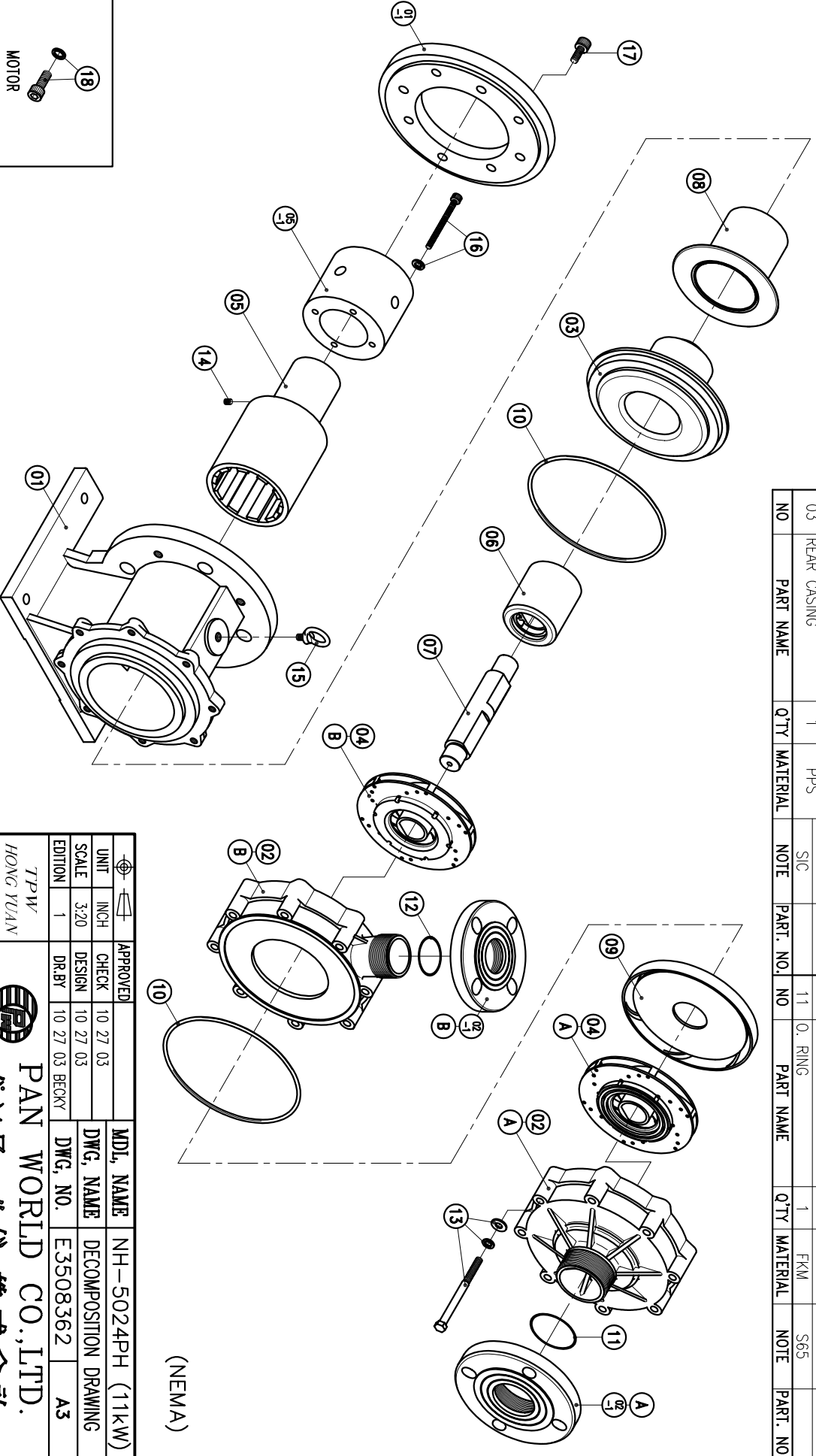


02-1	FLANGE	1	PPG	50A					
02-B	CASING-2ND	1	PPS	φ226.5X59.5					
02-1	FLANGE	1	PPG	65A					
02-A	FRONT CASING-1ST	1	PPS	THRUST PAD-CERAMIC BEARING-CARBON BEARING-SIC					
01-1	TRANSITION FLANGE	1	FC-20	φ254X21.6					
01	BRACKET	1	FC-20	φ226.5X205					

10	O. RING	2	FKM	G200					
09	DEFUSER	1	PPS	φ195X18					
08	REAR CASING COVER	1		φ158X121					
07	SPINDLE	1	CERAMIC	φ38X198					
06	MAGNET CAPSULE	1	PPG	φ79.6X92					
05-1	FLY WHEEL	1	S45C	φ122X97					
05	DRIVE MAGNET	1	FCD-45	φ122X199					
04-B	IMPELLER ASS'Y-2ND	1	PPS	5024PH					
04-A	IMPELLER ASS'Y-1ST	1	PPS	5024PH					
03	REAR CASING	1	PPS	CARBON					

18	HEXAGON SOCKET BOLT	4	SUS304	1/2"-13x1 1/4"					
17	HEXAGON SOCKET WASHER	4	SUS304	M12X25					
16	HEXAGON SOCKET BOLT	4	SUS304	M8X90					
15	EYE BOLT	1	S41C	M12X20					
14	SET SCREW	2	S435	M8X10					
13	HEXAGON HEAD BOLT	8	SUS304	M10X120					
12	O. RING	1	FKM	S50					
11	w/1 SPRING WASHER	1	FKM	S65					



(NEMA)

APPROVED	10 27 03	MDL NAME	NH-5024PH (11kW)
CHECK	10 27 03	DWG. NAME	DECOMPOSITION DRAWING
DESIGN	10 27 03	DWG. NO.	E3508362
DR.BY	10 27 03 BECKY		A3

TPW
HONG YUAN



PAN WORLD CO., LTD.
パンワールド株式会社