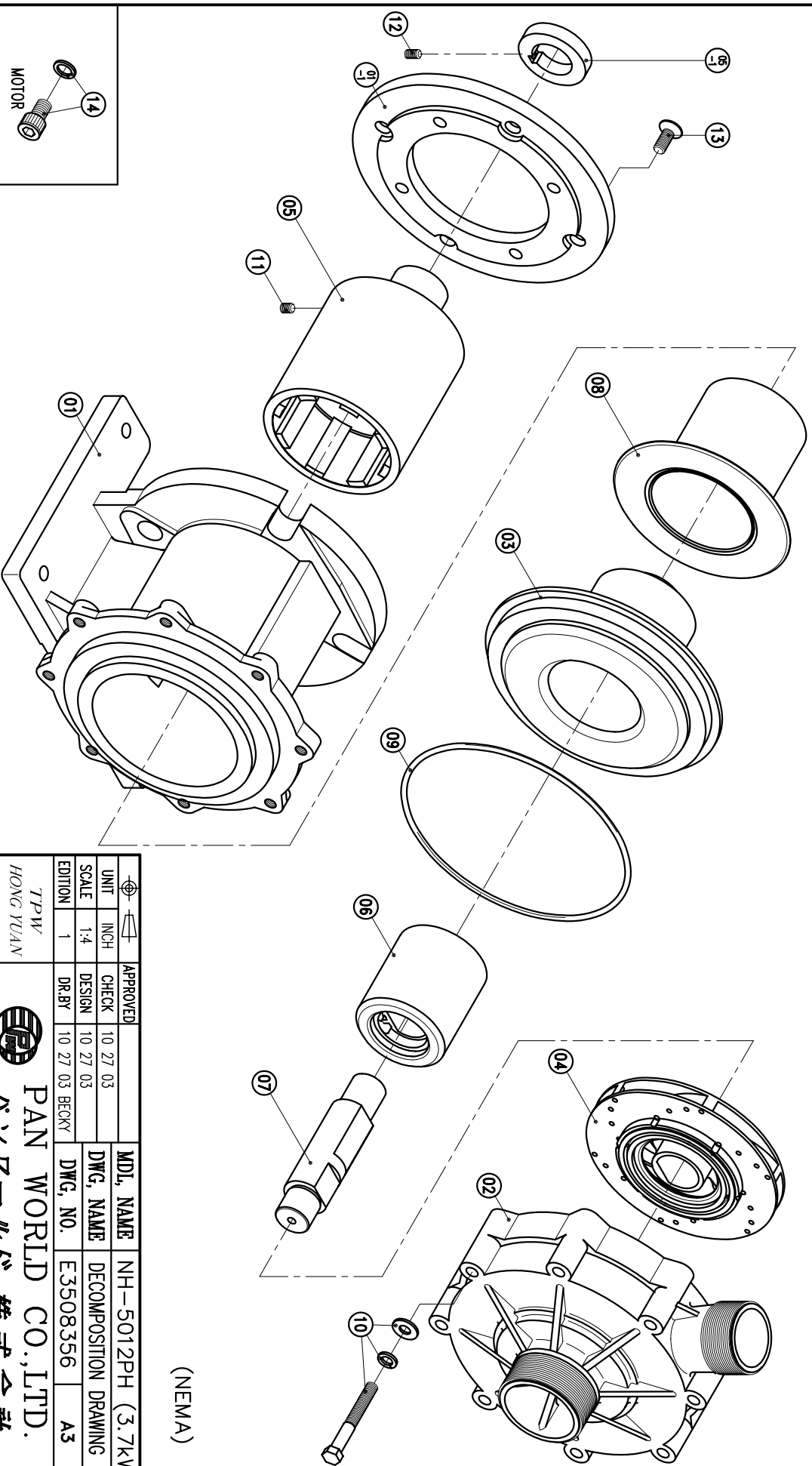


NO	PART NAME	Q'TY	MATERIAL	NOTE	PART. NO.
02	FRONT CASING	1	PPS	THRUST PAD: CERAMIC BEARING: CARBON THRUST PAD: SIC	
01-1	TRANSITION FLANGE	1	FC-20	φ228.6X18	
01	BRACKET	1	FC-20	φ226.5X183.5	

NO	PART NAME	Q'TY	MATERIAL	NOTE	PART. NO.
07	SPINDLE	1	CERAMIC	φ38X156	
06	MAGNET CAPSULE	1	PPG	φ79.6X92	
05-1	RING	1	S45C	φ48X9.8	
05	DRIVE MAGNET	1	FCD-45	φ122X179	
04	IMPELLER ASS'Y	1	PPS	5012PH	
03	REAR CASING	1	PPS	CARBON SIC	

NO	PART NAME	Q'TY	MATERIAL	NOTE	PART. NO.
14	HEXAGON SOCKET BOLT w/1 SPRING WASHER	4	SUS304	1/2"-13X3/4"	
13	COUNTER SUNK HEAD BOLT	4	S435	M10X25	
12	SET SCREW	1	S435	M6X10	
11	SET SCREW	2	S435	M8X10	
10	HEXAGON HEAD BOLT w/1 SPRING WASHER w/1 PLAIN WASHER	8	SUS304	M10X80	
09	O. RING	1	FKM	G200	
08	REAR CASING COVER	1	SUS304	φ158X121	



(NEMA)

APPROVED	CHECK	DESIGN	DR. BY	MDL. NAME	DWG. NAME	DECOMPOSITION DRAWING	DWG. NO.	E3508356	A3
10 27 03	10 27 03	10 27 03	10 27 03 BECKY	NH-5012PH (3.7KW)					

TPW
HONG YUAN



PAN WORLD CO., LTD.
パンワールド株式会社