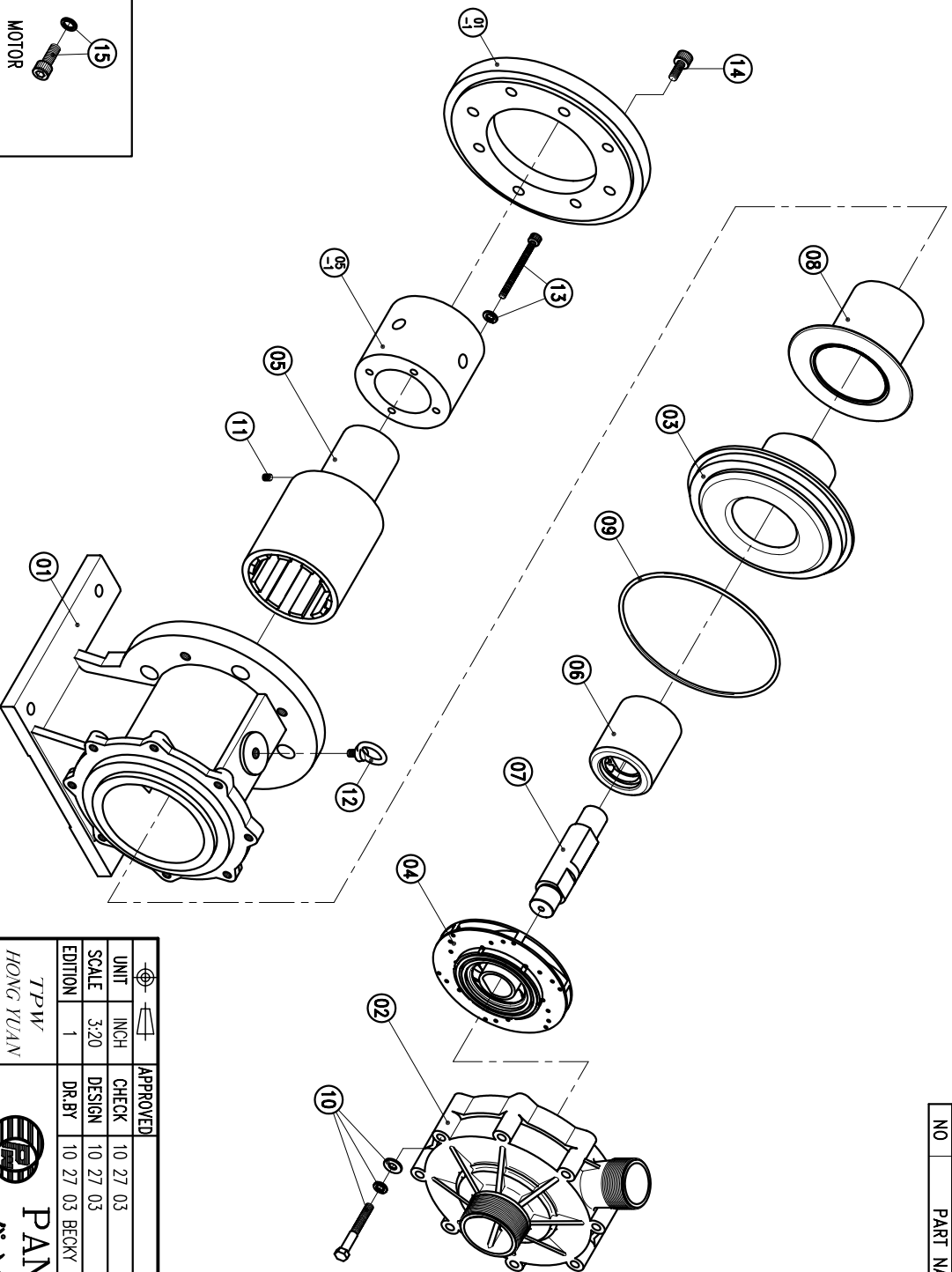


NO	PART NAME	Q'TY	MATERIAL	NOTE	PART. NO.
01	FRONT CASING-1ST	1	PPS		
01-1	TRANSITION FLANGE	1	FC-20	φ25.4X21.6	
01	BRACKET	1	FC-20	φ226.5X205	
02	THRUST PAD: CERAMIC				
02	THRUST PAD: SIC				
03	BEARING: CARBON				
03	BEARING: SIC				
04	BEARING: SIC				
05	BEARING: SIC				
06	BEARING: SIC				
07	BEARING: SIC				
08	REAR CASING COVER	1	CERAMIC	φ158X121	
08	SPINDLE	1	SIC	φ38X156	
09	MAGNET CAPSULE	1	PPG	φ79.6X92	
10	FLY WHEEL	1	S45C	φ122X97	
11	DRIVE MAGNET	1	FCD-45	φ122X199	
12	IMPELLER ASS'Y	1	PPS	5013PH	
13	REAR CASING	1	PPS	CARBON	
14	HEXAGON SOCKET BOLT	4	SUS304	1/2"-13X1 1/4"	
15	w/1 SPRING WASHER	4	SUS304	M12X25	
16	HEXAGON SOCKET BOLT	4	SUS304	M8X90	
17	w/1 SPRING WASHER	4	SUS304	M8X90	
18	EYE BOLT	1	S41C	M12X20	
19	SET SCREW	2	S435	M8X10	
20	HEXAGON HEAD BOLT	8	SUS304	M10X80	
21	w/1 SPRING WASHER	8	SUS304	M10X80	
22	w/1 PLAIN WASHER	8	SUS304	M10X80	
23	O. RING	1	FKM	G200	



(NEMA)

APPROVED	CHECK	DATE	MDL. NAME	NH-5013PH (11kW)
TPW		10 27 03	DWG. NAME	DECOMPOSITION DRAWING
HONG YUAN		10 27 03	DWG. NO.	E3508344
			DR. BY	10 27 03 BECKY
				A3



PAN WORLD CO., LTD.  
パンワールド株式会社