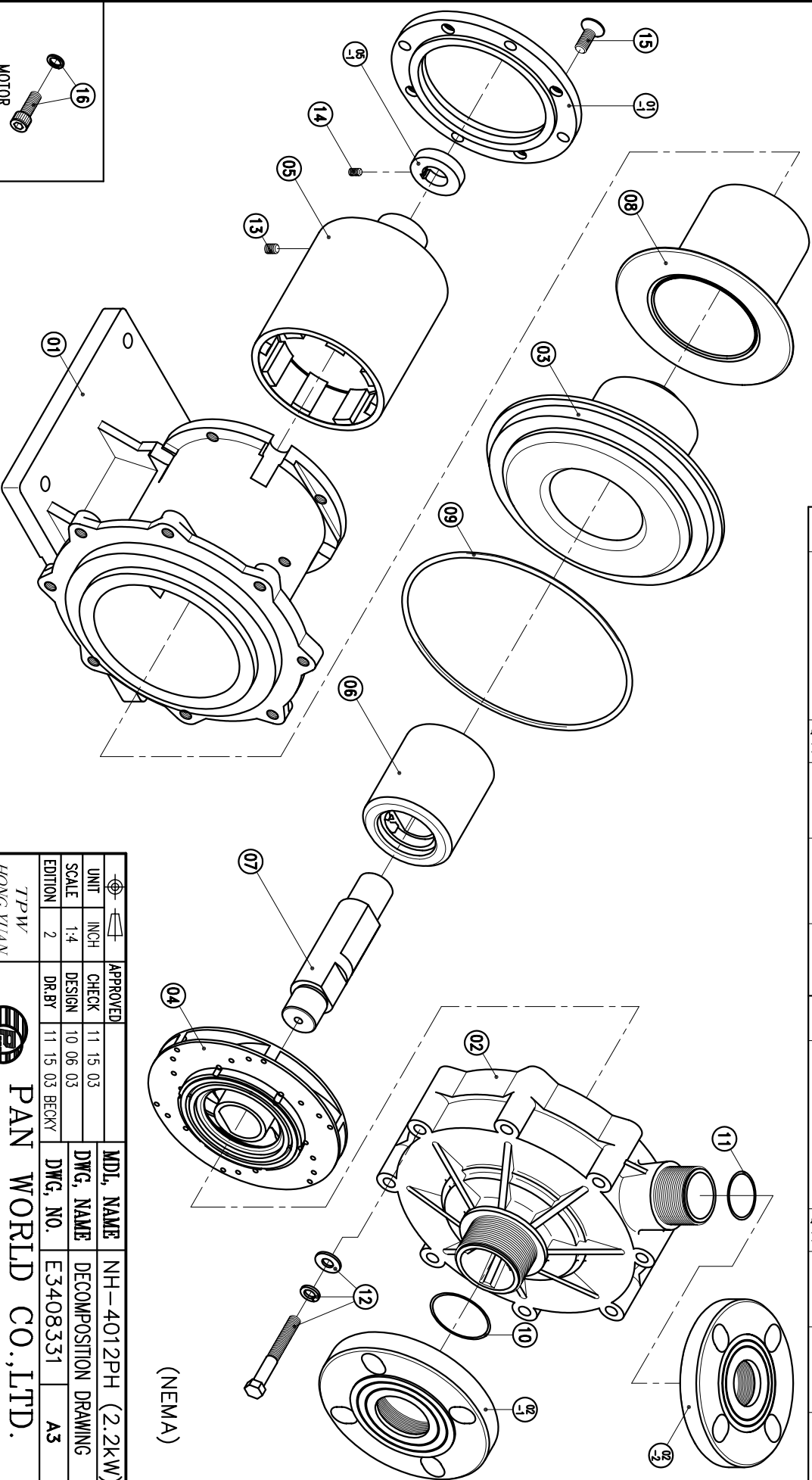


02-2	FLANGE	1	PPG	40A		09	O. RING	1	FKM	G200		16	HEXAGON SOCKET BOLT	4	SUS304	3/8"-16X1"
02-1	FLANGE	1	PPG	50A		08	REAR CASING COVER	1	SUS304	Ø158X121		15	COUNTER SUNK HEAD BOLT	4	S435	M10X20
02	FRONT CASING	1	PPS	THRUST PAD-CERAMIC BEARING-CARBON BEARING-SIC		07	SPINDLE	1	CERAMIC SIC	Ø38X156		14	SET SCREW	2	S435	M6X10
01-1	TRANSITION FLANGE	1	FC-20	Ø165.1X14		06	MAGNET CAPSULE	1	PPG	Ø79.6X92		13	SET SCREW	2	S435	M8X10
01	BRACKET	1	FC-20	Ø226.5X173.5		05-1	RING	1	S45C	Ø44X10		12	HEXAGON HEAD BOLT	8	SUS304	M10X80
						05	DRIVE MAGNET	1	FCD-45	Ø118X169			w/1 SPRING WASHER			
						04	IMPELLER ASS'Y	1	PPS	4012PH			w/1 PLAIN WASHER			
						03	REAR CASING	1	PPS	CARBON SIC		11	O. RING	1	FKM	S40
												10	O. RING	1	FKM	S50



(NEMA)

APPROVED		CHECK		DESIGN		DR.BY		DWG. NO.	
UNIT	INCH	11	15	03	10	06	03	E3408331	A3
SCALE	1-4								
EDITION	2								

TPW  
HONGYUAN



PAN WORLD CO.,LTD.  
パンワールド株式会社