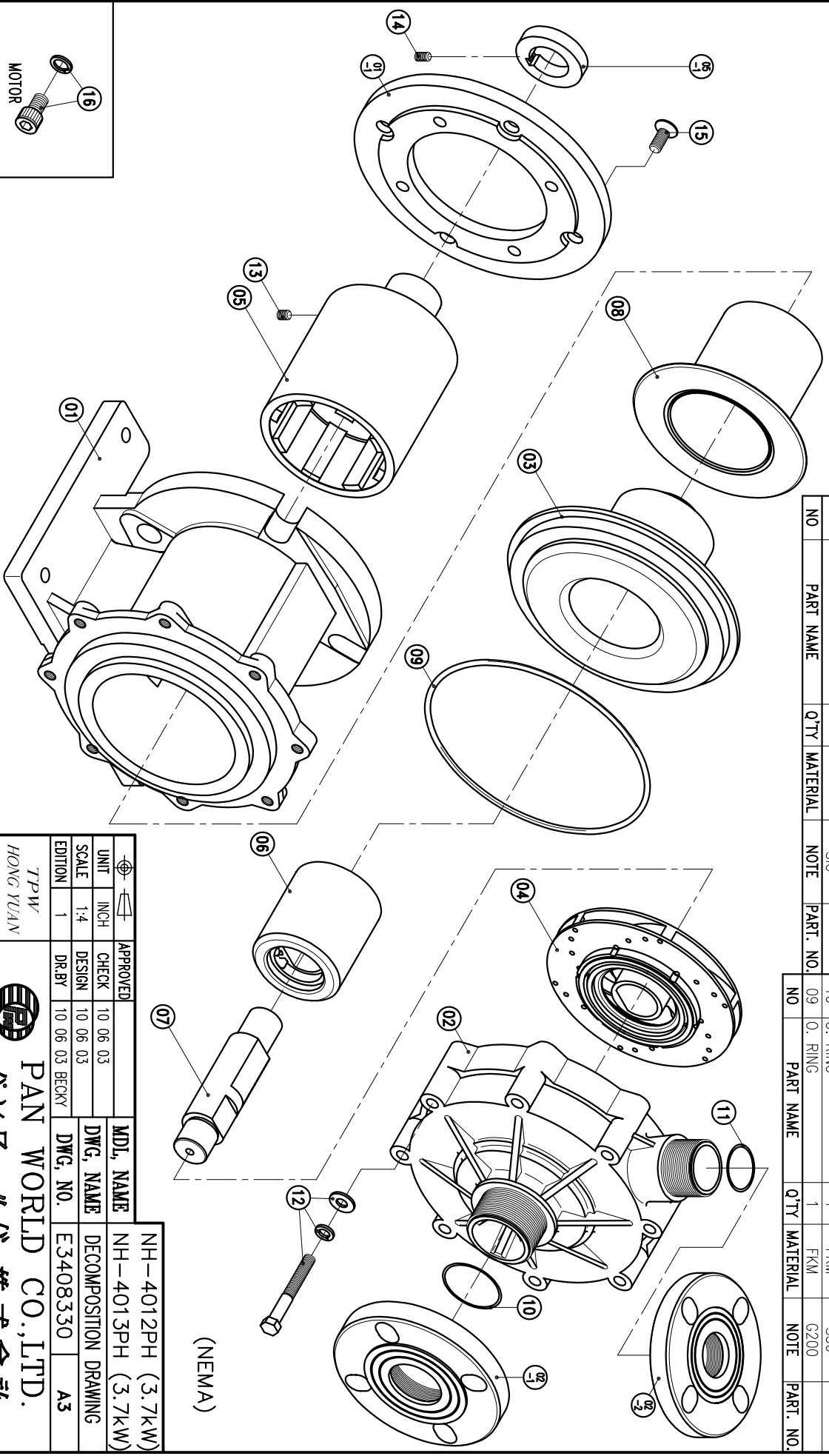


02-2	FLANGE	1	PPG	40A	
02-1	FLANGE	1	PPG	50A	
02	FRONT CASING	1	PPS	BEARING-CARBON THRUST PAD-SIC	
01-1	TRANSITION FLANGE	1	FC-20	φ228.6X18	
01	BRACKET	1	FC-20	φ226.5X183.5	

08	REAR CASING COVER	1	SUS304	φ158X121	
07	SPINDLE	1	CERAMIC	φ38X156	
06	MAGNET CAPSULE	1	PPG	φ79.6X92	
05-1	RING	1	S45C	φ48X9.8	
05	DRIVE MAGNET	1	FCD-45	φ122X179	
04	IMPELLER ASS'Y	1	PPS	4012PH	
03	REAR CASING	1	PPS	4013PH	

16	HEXAGON SOCKET BOLT	4	SUS304	1/2"-13X3/4"	
15	COUNTER SUNK HEAD BOLT	4	S435	M10X25	
14	SET SCREW	1	S435	M6X10	
13	SET SCREW	2	S435	M8X10	
12	HEXAGON HEAD BOLT w/1 SPRING WASHER w/1 PLAIN WASHER	8	SUS304	M10X80	
11	O. RING	1	FKM	S40	
10	O. RING	1	FKM	S50	
09	O. RING	1	FKM	G200	



APPROVED	10.06.03	MDL NAME	NH-4012PH (3.7kW)
CHECK	10.06.03	DWG. NAME	NH-4013PH (3.7kW)
DESIGN	10.06.03	DECOMPOSITION DRAWING	
DR.BY	10.06.03 BECKY	DWG. NO.	E3408330
EDITION	1		A3

TPW
HONG YUAN

PAN WORLD CO., LTD.
パンワールド株式会社

