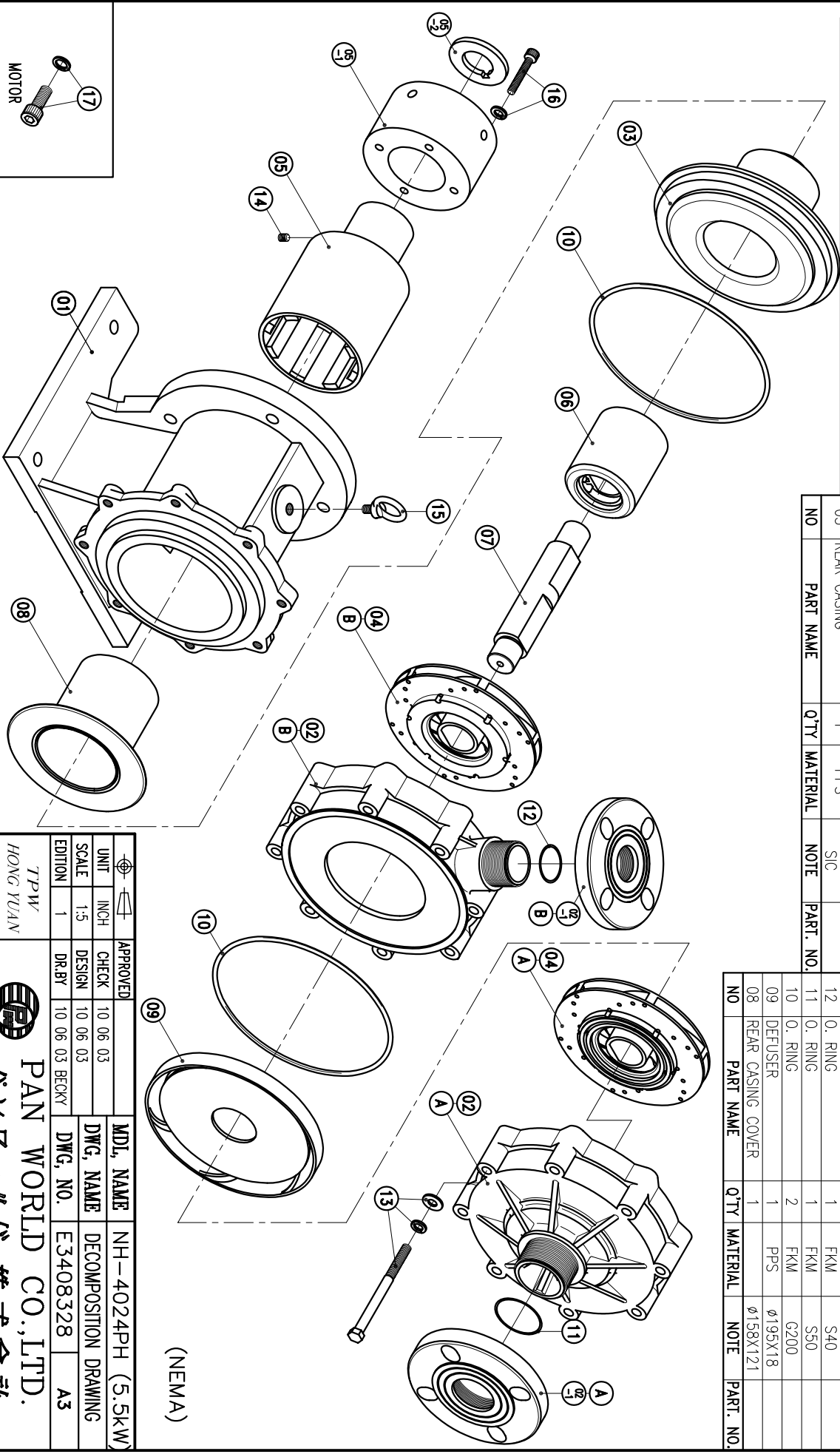


| | | | | | |
|------|------------------|---|-------|---|--|
| 02-1 | FLANGE | 1 | PPG | 40A | |
| 02-B | CASING-2ND | 1 | PPS | φ226.5X59.5 | |
| 02-1 | FLANGE | 1 | PPG | 50A | |
| 02-A | FRONT CASING-1ST | 1 | PPS | THRUST PAD: CERAMIC BEARING: CARBON THRUST PAD: SIC | |
| 01 | BRACKET | 1 | FC-20 | φ226.5X205 | |

| | | | | | |
|------|--------------------|---|---------|-------------------------|--|
| 07 | SPINDLE | 1 | CERAMIC | φ38X198 | |
| 06 | MAGNET CAPSULE | 1 | SIC | | |
| 05-2 | RING | 1 | PPG | φ79.6X92 | |
| 05-1 | FLY WHEEL | 1 | S45C | φ65X5.7 | |
| 05 | DRIVE MAGNET | 1 | S45C | φ122X68 | |
| 04-B | IMPELLER ASS'Y-2ND | 1 | FCD-45 | φ122X199 | |
| 04-A | IMPELLER ASS'Y-1ST | 1 | PPS | 4024PH | |
| 03 | REAR CASING | 1 | PPS | 4024PH CARBON SIC | |

| | | | | | |
|----|---|---|--------|----------------|--|
| 17 | HEXAGON SOCKET BOLT w/1 SPRING WASHER | 4 | SUS304 | 1/2"-13x1 1/4" | |
| 16 | HEXAGON SOCKET BOLT w/1 SPRING WASHER | 4 | SUS304 | M8X60 | |
| 15 | EYE BOLT | 1 | S41C | M12X20 | |
| 14 | SET SCREW | 2 | S435 | M8X10 | |
| 13 | HEXAGON HEAD BOLT w/1 SPRING WASHER w/1 PLAN WASHER | 8 | SUS304 | M10X120 | |
| 12 | O. RING | 1 | FKM | S40 | |
| 11 | O. RING | 1 | FKM | S50 | |
| 10 | O. RING | 2 | FKM | G200 | |
| 09 | DEFUSER | 1 | PPS | φ195X18 | |
| 08 | REAR CASING COVER | 1 | PPS | φ158X121 | |



(NEMA)

| | | | |
|----------|----------------|-----------|-----------------------|
| APPROVED | 10.06.03 | MDL NAME | NH-4024PH (5.5KW) |
| CHECK | 10.06.03 | DWG. NAME | DECOMPOSITION DRAWING |
| DESIGN | 10.06.03 | DWG. NO. | E3408328 |
| DR.BY | 10.06.03 BECKY | | A3 |

TPW
HONG YUAN

PAN WORLD CO., LTD.
パンワールド株式会社