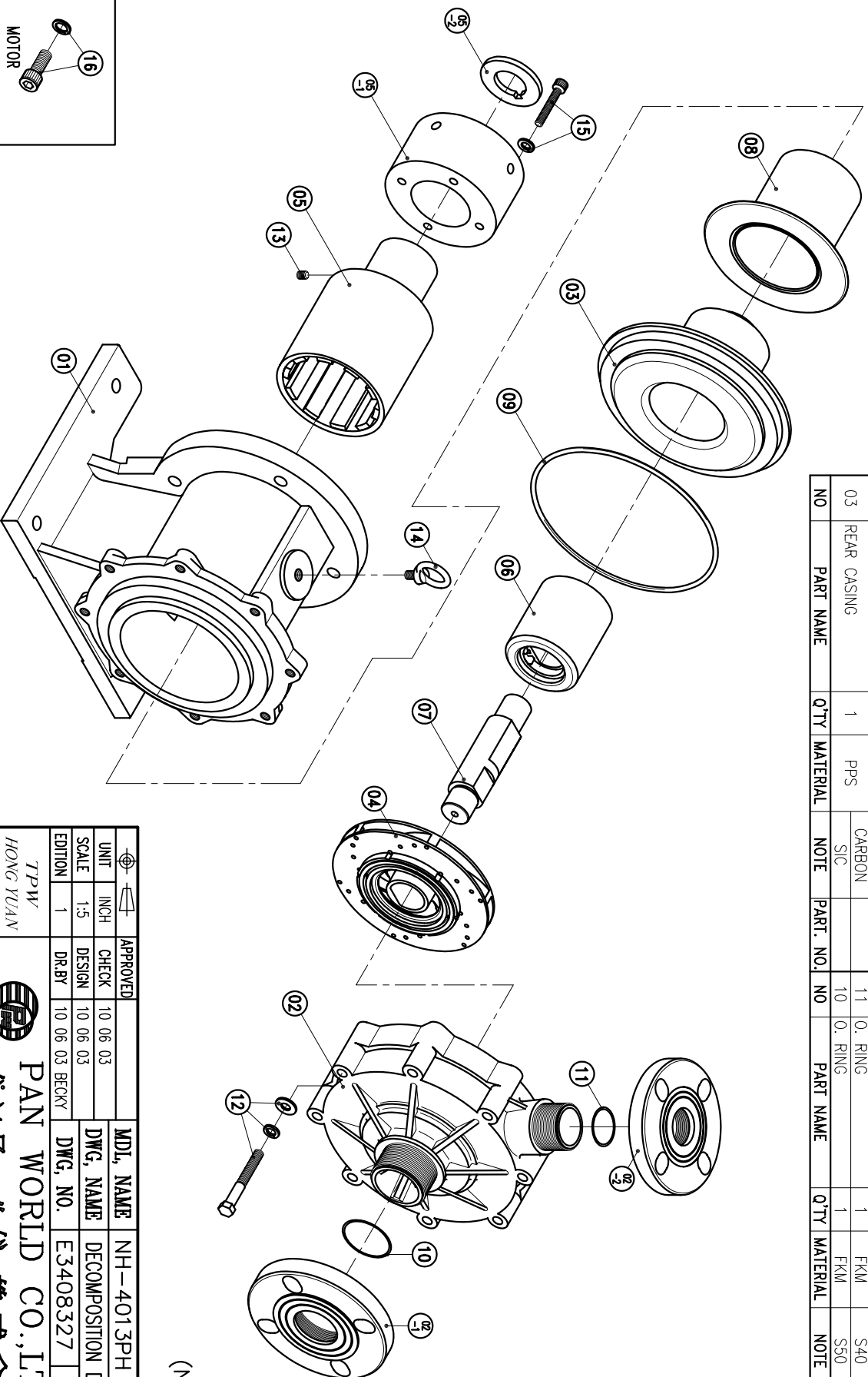


02-2	FLANGE	1	PPG	40A			
02-1	FLANGE	1	PPG	50A			
02	FRONT CASING	1	PPS	THRUST PAD-CERAMIC BEARING-CARBON BEARING-SiC			
01	BRACKET	1	FC-20	φ226.5X205			

09	O. RING	1	FKM	G200							
08	REAR CASING COVER	1		φ158X121							
07	SPINDLE	1	CERAMIC SiC	φ38X156							
06	MAGNET CAPSULE	1	PPG	φ79.6X92							
05-2	RING	1	S45C	φ65X5.7							
05-1	FLY WHEEL	1	S45C	φ122X68							
04	DRIVE MAGNET	1	FCD-45	φ122X199							
04	IMPELLER ASS'Y	1	PPS	401.3PH CARBON							
03	REAR CASING	1	PPS								
NO	PART NAME	Q'TY	MATERIAL	NOTE	PART. NO.	NO	PART NAME	Q'TY	MATERIAL	NOTE	PART. NO.
16	HEXAGON SOCKET BOLT	4	SUS304	1/2"-13X1 1/4"							
15	HEXAGON SOCKET BOLT w/1 SPRING WASHER	4	SUS304	M8X60							
14	EYE BOLT	1	S41C	M12X20							
13	SET SCREW	2	S435	M8X10							
12	HEXAGON HEAD BOLT w/1 SPRING WASHER w/1 PLAN WASHER	8	SUS304	M10X80							
11	O. RING	1	FKM	S40							
10	O. RING	1	FKM	S50							



(NEMA)

APPROVED	CHECK	10.06.03	MDL NAME	NH-4013PH (7.5kW)
DESIGN	SCALE	1-5	DWG. NAME	DECOMPOSITION DRAWING
DR.BY	EDITION	1	DWG. NO.	E3408327
10.06.03				A3

TPW
HONG YUAN



PAN WORLD CO., LTD.
パンワールド株式会社