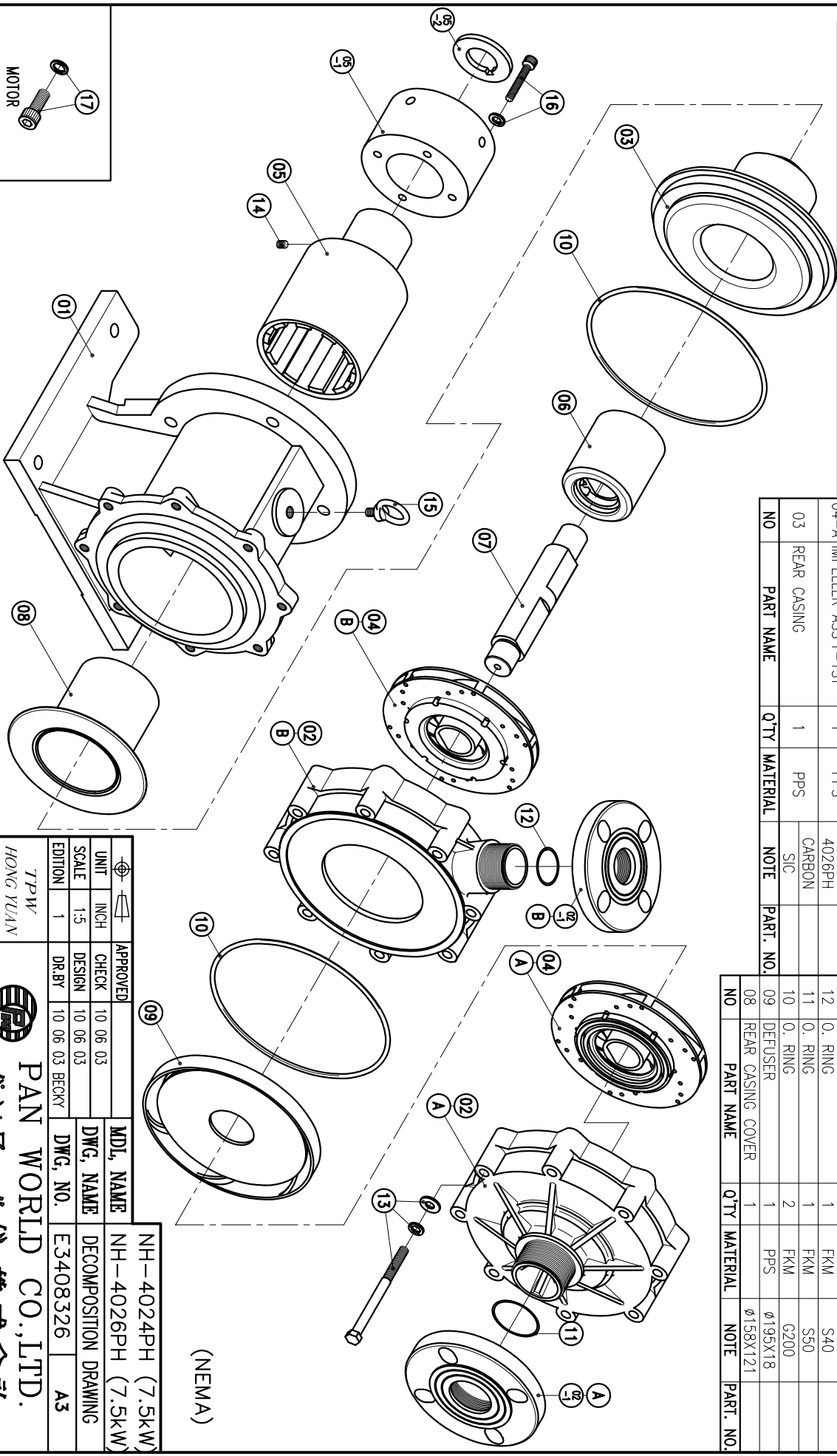


02-1	FLANGE	1	PPG	40A	
02-B	CASING-2ND	1	PPS	φ226.5X59.5	
02-1	FLANGE	1	PPG	50A	
02-A	FRONT CASING-1ST	1	PPS	THRUST PAD: CERAMIC BEARING: CARBON	
01	BRACKET	1	FC-20	φ226.5X205	

07	SPINDLE	1	CERAMIC	φ38X198	
06	MAGNET CAPSULE	1	SIC		
05-2	RING	1	PPG	φ79.6X92	
05-1	FLY WHEEL	1	S45C	φ65X5.7	
05	DRIVE MAGNET	1	S45C	φ122X68	
04-B	IMPELLER ASS'Y-2ND	1	FCD-45	φ122X199	
04-A	IMPELLER ASS'Y-1ST	1	PPS	4024PH 4026PH	
03	REAR CASING	1	PPS	4026PH CARBON	

17	HEXAGON SOCKET BOLT w/1 SPRING WASHER	4	SUS304	1/2"-13x1 1/4"	
16	HEXAGON SOCKET BOLT w/1 SPRING WASHER	4	SUS304	M8X60	
15	EYE BOLT	1	S41C	M12X20	
14	SET SCREW	2	S435	M8X10	
13	HEXAGON HEAD BOLT w/1 SPRING WASHER w/1 PLAIN WASHER	8	SUS304	M10X120	
12	O. RING	1	FKM	S40	
11	O. RING	1	FKM	S50	
10	O. RING	2	FKM	G200	
09	DEFUSER	1	PPS	φ195X18	
08	REAR CASING COVER	1	PPS	φ158X121	



(NEMA)

APPROVED	10.06.03	MDL NAME	NH-4024PH (7.5KW)
CHECK	10.06.03	DWG. NAME	NH-4026PH (7.5KW)
DESIGN	10.06.03	DECOMPOSITION DRAWING	
DR.BY	10.06.03 BECKY	DWG. NO.	E3408326
EDITION	1		A3

TPW  
HONG YUAN



PAN WORLD CO., LTD.  
パンワールド株式会社