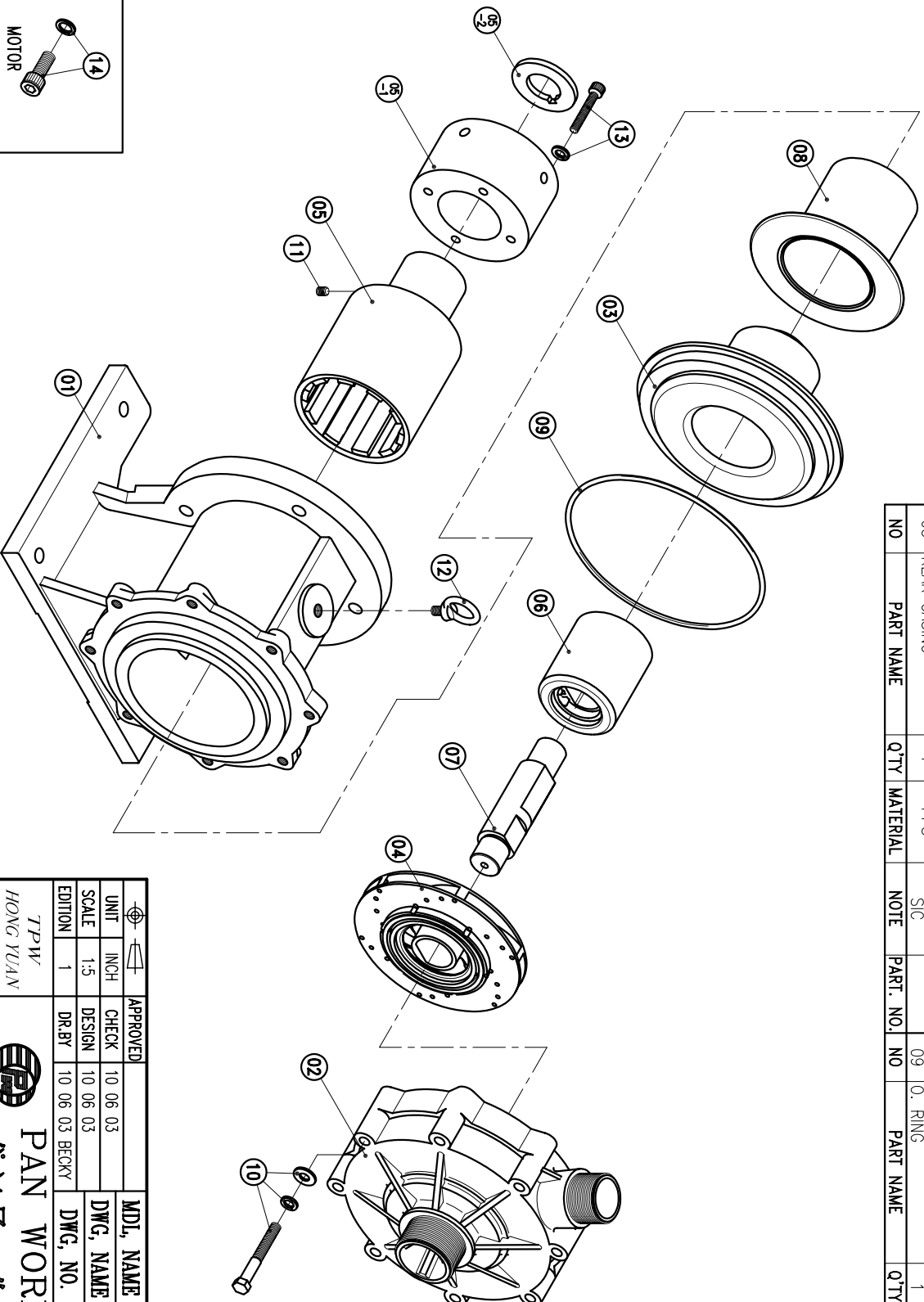


02	FRONT CASING	1	PPS	THRUST PAD: CERAMIC THRUST PAD: SIC															
01	BRACKET	1	FC-20	BEARING: SIC	FC-20	φ226.5X205													

08	REAR CASING COVER	1				φ158X121													
07	SPINDLE	1		CERAMIC		φ38X156													
06	MAGNET CAPSULE	1		SIC		φ79.6X92													
05-2	RING	1		PPG		φ65X5.7													
05-1	FLY WHEEL	1		S45C		φ122X68													
05	DRIVE MAGNET	1		FCD-45		φ122X199													
04	IMPELLER ASS'Y	1		PPS		4013PH													
03	REAR CASING	1		PPS		CARBON													
						SIC													
NO	PART NAME	Q'TY	MATERIAL	NOTE	PART. NO.	NO	PART NAME	Q'TY	MATERIAL	NOTE	PART. NO.								
14	HEXAGON SOCKET BOLT	4					HEXAGON SOCKET BOLT	4	SUS304	1/2"-13X1 1/4"									
13	HEXAGON SOCKET BOLT	4					HEXAGON SOCKET BOLT	4	SUS304	M8X60									
12	EYE BOLT	1					EYE BOLT	1	S41C	M12X20									
11	SET SCREW	2					SET SCREW	2	S435	M8X10									
10	HEXAGON HEAD BOLT	8					HEXAGON HEAD BOLT	8	SUS304	M10X80									
09	w/1 SPRING WASHER	8					w/1 SPRING WASHER	8	SUS304	M10X80									
09	w/1 PLAN WASHER	1					w/1 PLAN WASHER	1	FKM	G200									
09	O. RING	1					O. RING	1	FKM	G200									



(NEMA)

APPROVED	CHECK	10.06.03	MDL NAME	NH-4013PH (7.5kW)
CHECK	DESIGN	10.06.03	DWG. NAME	DECOMPOSITION DRAWING
SCALE	1-5		DWG. NO.	E3408323
EDITION	1		DR.BY	10.06.03 BECKY
				A3

TPW
HONG YUAN



PAN WORLD CO., LTD.
パンワールド株式会社