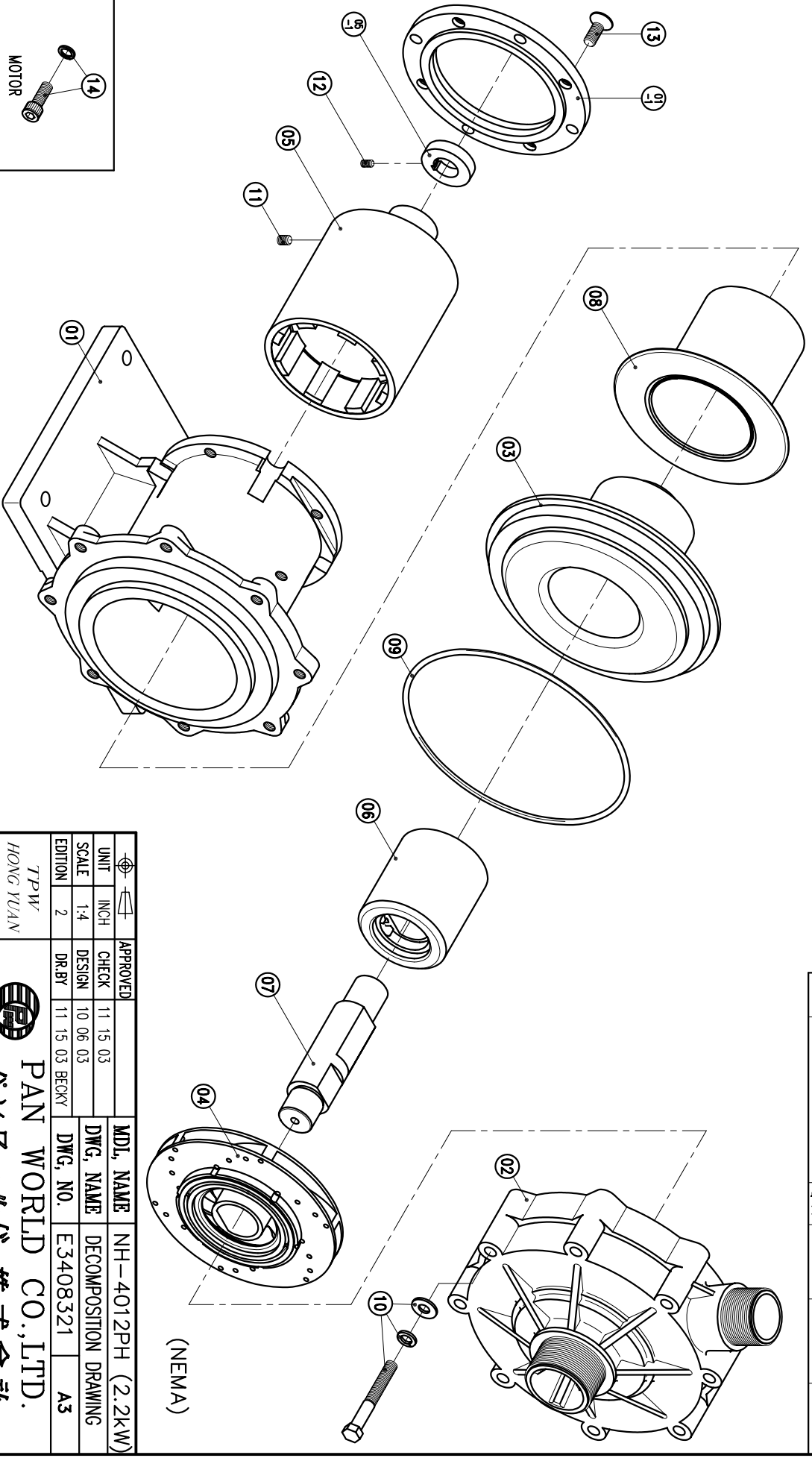


02	FRONT CASING	1	PPS	THRUST PAD: CERAMIC BEARING: CARBON THRUST PAD: SIC		
01-1	TRANSITION FLANGE	1	FC-20	BEARING: SIC	Ø165.1X14	
01	BRACKET	1	FC-20		Ø226.5X173.5	

07	SPINDLE	1	CERAMIC		Ø38X156	
06	MAGNET CAPSULE	1	SIC			
05-1	RING	1	PEG		Ø79.6X92	
05	DRIVE MAGNET	1	S45C		Ø44X10	
04	IMPELLER ASS'Y	1	FCD-45		Ø118X169	
03	REAR CASING	1	PPS		4012PH CARBON	

14	HEXAGON SOCKET BOLT	4	SUS304		3/8"-16X1"	
13	w/1 SPRING WASHER	4	S435		M10X20	
12	COUNTER SUNK HEAD BOLT	2	S435		M6X10	
11	SET SCREW	2	S435		M8X10	
10	HEXAGON HEAD BOLT	8	SUS304		M10X80	
09	w/1 SPRING WASHER	8	SUS304		M10X80	
08	w/1 PLAIN WASHER	1	FKM		G200	
08	REAR CASING COVER	1	SUS304		Ø158X121	



APPROVED	11 15 03	CHECK	11 15 03	UNIT	INCH
DESIGN	10 06 03	SCALE	1-4	EDITION	2
DR.BY	11 15 03	DR.BY	11 15 03	BECKY	

MDL NAME	NH-4012PH (2.2kW)
DWG. NAME	DECOMPOSITION DRAWING
DWG. NO.	E3408321
	A3

TPW  
HONG YUAN



PAN WORLD CO., LTD.  
パンワールド株式会社