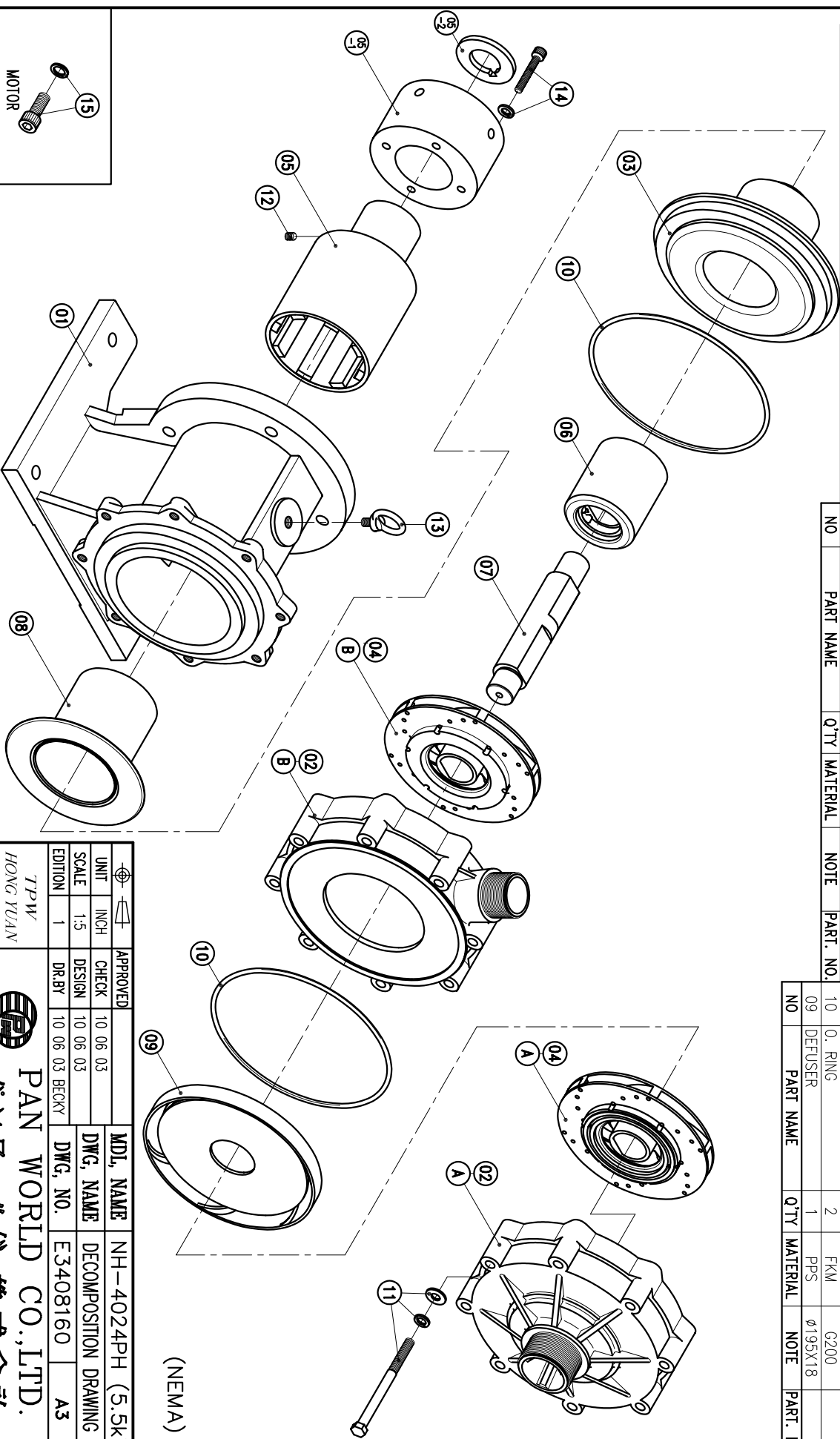


03	REAR CASING	1	PPS	CARBON		08	REAR CASING COVER	1		0158X121		15	HEXAGON SOCKET BOLT	4	SUS304	1/2"-13X1 1/4"
02-B	CASING-2ND	1	PPS	0226.5X59.5	SIC	07	SPINDLE	1	CERAMIC	038X198		14	HEXAGON SOCKET BOLT	4	SUS304	M8X60
02-A	FRONT CASING-1ST	1	PPS	THRUST PAD: CERAMIC BEARING: CARBON		06	MAGNET CAPSULE	1	PPG	079.6X92		13	EYE BOLT	1	S41C	M12X20
01	BRACKET	1	FC-20	0226.5X205		05-1	FLY WHEEL	1	S45C	0122X68		12	SET SCREW	2	S435	M8X10
						05	DRIVE MAGNET	1	FCD-45	0122X199		11	HEXAGON HEAD BOLT	8	SUS304	M10X120
						04-B	IMPELLER ASS'Y-2ND	1	PPS	4024PH		10	w/1 SPRING WASHER	2	FKM	G200
						04-A	IMPELLER ASS'Y-1ST	1	PPS	4024PH		09	w/1 PLAN WASHER	1	PPS	0195X18

NO	PART NAME	QTY	MATERIAL	NOTE	PART. NO.
09	DEFUSER	1	PPS	0195X18	



(NEMA)

APPROVED	10.06.03	CHECK	10.06.03
DESIGN	10.06.03	SCALE	1-5
DR.BY	10.06.03	EDITION	1
MDL. NAME	NH-4024PH (5.5KW)		
DWG. NAME	DECOMPOSITION DRAWING		
DWG. NO.	E3408160		A3

TPW
HONG YUAN



PAN WORLD CO., LTD.
パンワールド株式会社