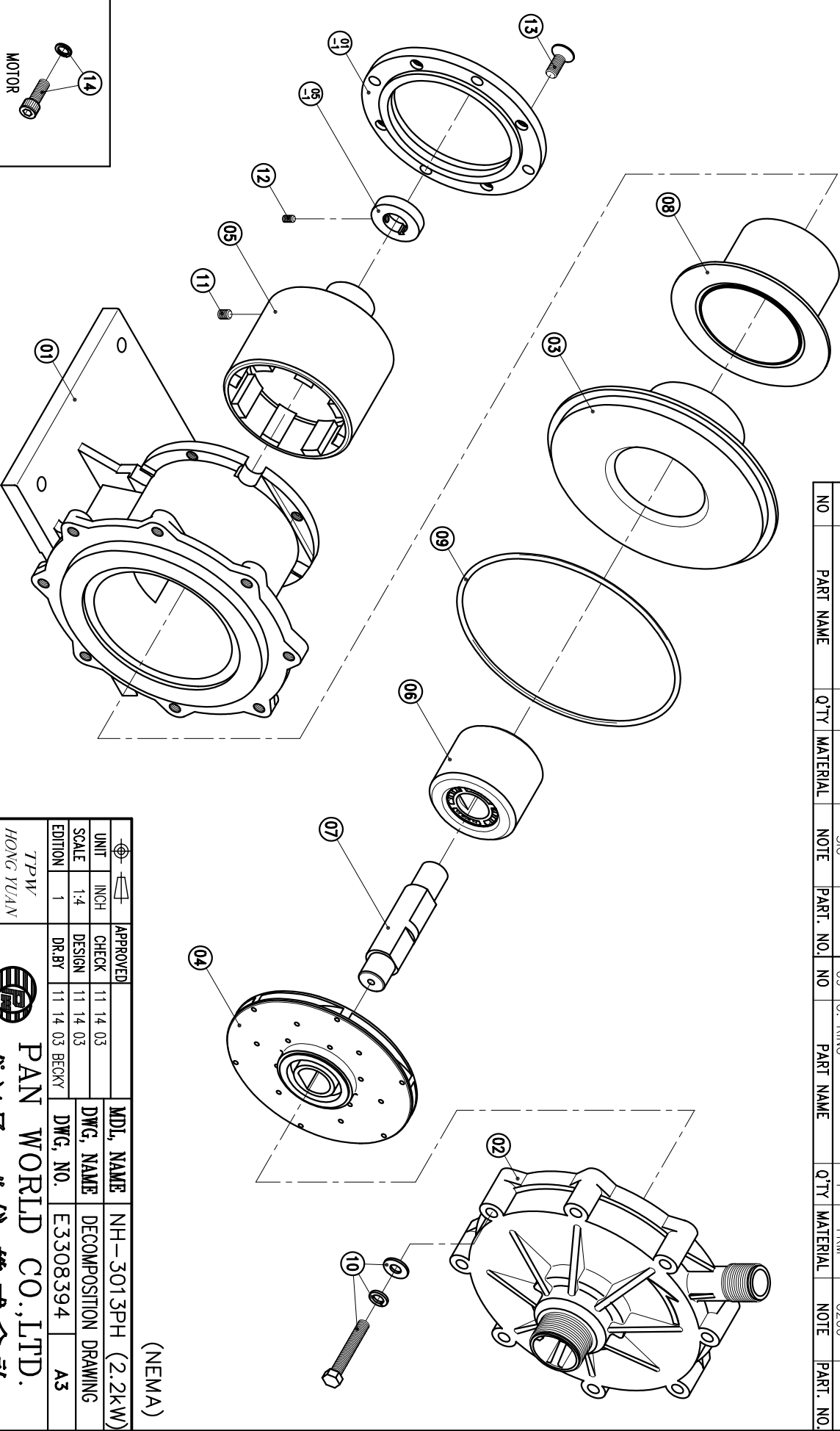


02	FRONT CASING	1	PPS	THRUST PAD: CERAMIC BEARING: CARBON THRUST PAD: SIC														
01-1	TRANSITION FLANGE	1	FC-20	FC-20	φ165.1X14													
01	BRACKET	1	FC-20	φ226.5X140														
NO	PART NAME	Q'TY	MATERIAL	NOTE	PART. NO.													
08	REAR CASING	1	SUS304	φ145X88														
07	SPINDLE	1	CERAMIC SIC	φ30X131														
06	MAGNET CAPSULE	1	PPG	φ79.6X63.5														
05-1	RING	1	S45C	φ44X10														
05	DRIVE MAGNET	1	FCD-45	φ118X133														
04	IMPELLER ASS'Y	1	PPS	φ3013PH CARBON														
03	REAR CASING	1	PPS	SIC														
NO	PART NAME	Q'TY	MATERIAL	NOTE	PART. NO.	NO	PART NAME	Q'TY	MATERIAL	NOTE	PART. NO.							
14	HEXAGON SOCKET BOLT	4	SUS304	3/8"-16X1"														
13	COUNTER SUNK HEAD BOLT	4	S435	M10X20														
12	SET SCREW	2	S435	M6X10														
11	SET SCREW	2	S435	M8X10														
10	HEXAGON HEAD BOLT w/1 SPRING WASHER w/1 PLAN WASHER	8	SUS304	M10X60														
09	O. RING	1	FKM	G200														



(NEMA)

APPROVED		CHECK		DESIGN		DRAWING	
11	14	03	11	14	03	11	14
DR.BY		11		14		03	
BECKY		11		14		03	
1		1		1		1	
1		1		1		1	

TPW
HONG YUAN



PAN WORLD CO., LTD.
パンワールド株式会社

MDL NAME	NH-3013PH (2.2kW)
DWG. NAME	DECOMPOSITION DRAWING
DWG. NO.	E3308394
	A3