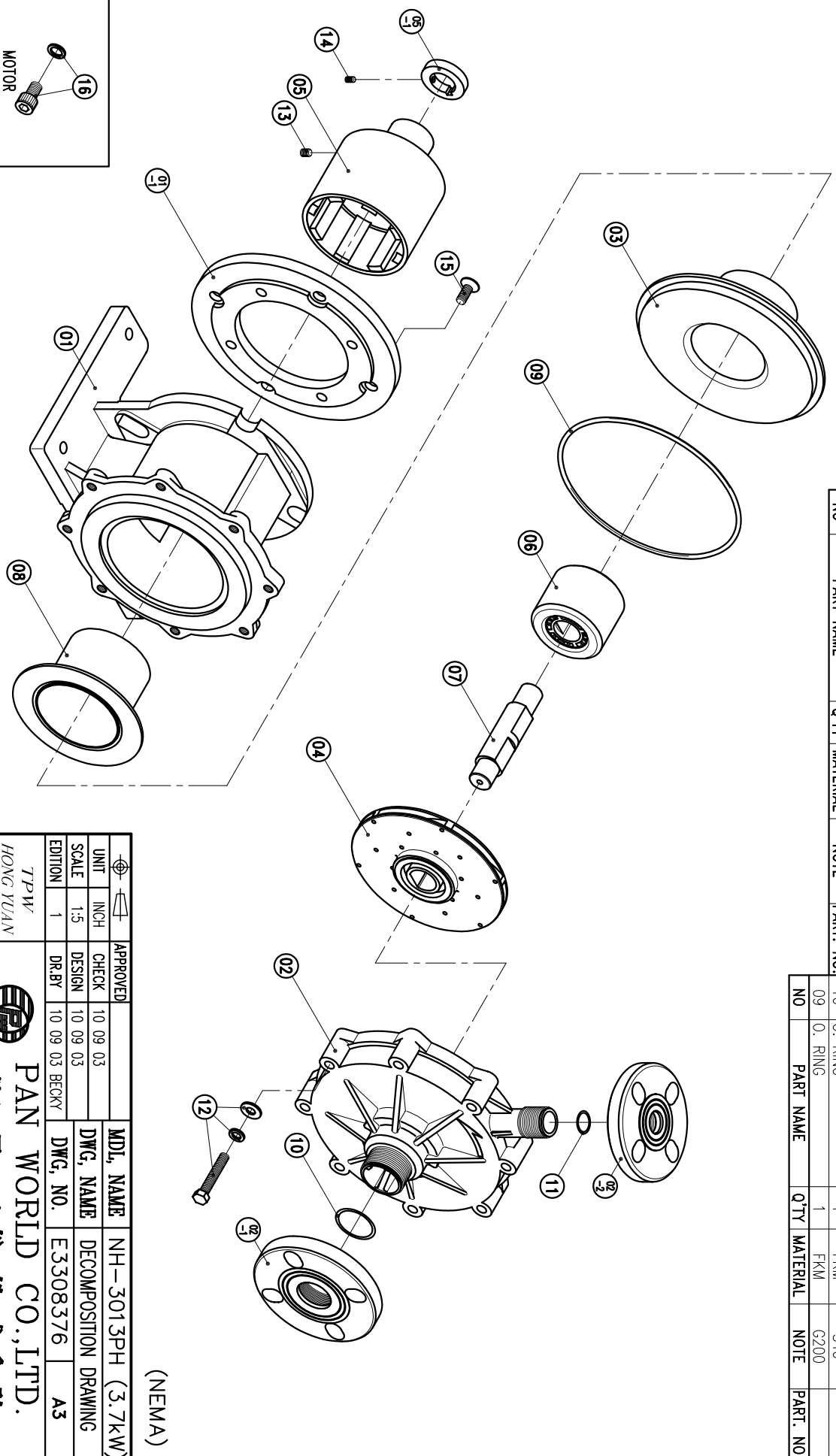


02-2	FLANGE	1	PPG	25A	1001007100	08	REAR CASING COVER	1		φ145X88	16	HEXAGON SOCKET BOLT	4	SUS304	1/2"-13X3/4"
02-1	FLANGE	1	PPG	40A		07	SPINDLE	1	CERAMIC	φ30X131	15	COUNTER SUNK HEAD BOLT	4	S435	M10X25
02	FRONT CASING	1	PPS	THRUST PAD-CERAMIC BEARING-CARBON THRUST PAD-SIC		06	MAGNET CAPSULE	1	PPG	φ79.6X63.5	14	SET SCREW	2	S435	M6X10
01-1	TRANSITION FLANGE	1	FC-20	φ228.6X18		05-1	RING	1	S45C	φ48X9.8	13	SET SCREW	2	S435	M8X10
01	BRACKET	1	FC-20	φ226.5X151		05	DRIVE MAGNET	1	FCD-45	φ118X144	12	HEXAGON HEAD BOLT	8	SUS304	M10X60
						04	IMPELLER ASS'Y	1	PPS	3013PH		w/1 SPRING WASHER			
						03	REAR CASING	1	PPS	CARBON SIC	11	O. RING	1	FKM	S24
											10	O. RING	1	FKM	S40
											09	O. RING	1	FKM	G200

NO	PART NAME	QTY	MATERIAL	NOTE	PART. NO.
11	O. RING	1	FKM	S24	
10	O. RING	1	FKM	S40	
09	O. RING	1	FKM	G200	



(NEMA)

APPROVED	CHECK	10.09.03	MDL. NAME	NH-3013PH (3.7kW)
CHECK	DESIGN	10.09.03	DWG. NAME	DECOMPOSITION DRAWING
SCALE	1-5		DWG. NO.	E3308376
EDITION	1		DR. BY	10.09.03 BECKY
				A3

TPW
HONG YUAN



PAN WORLD CO., LTD.
パンワールド株式会社