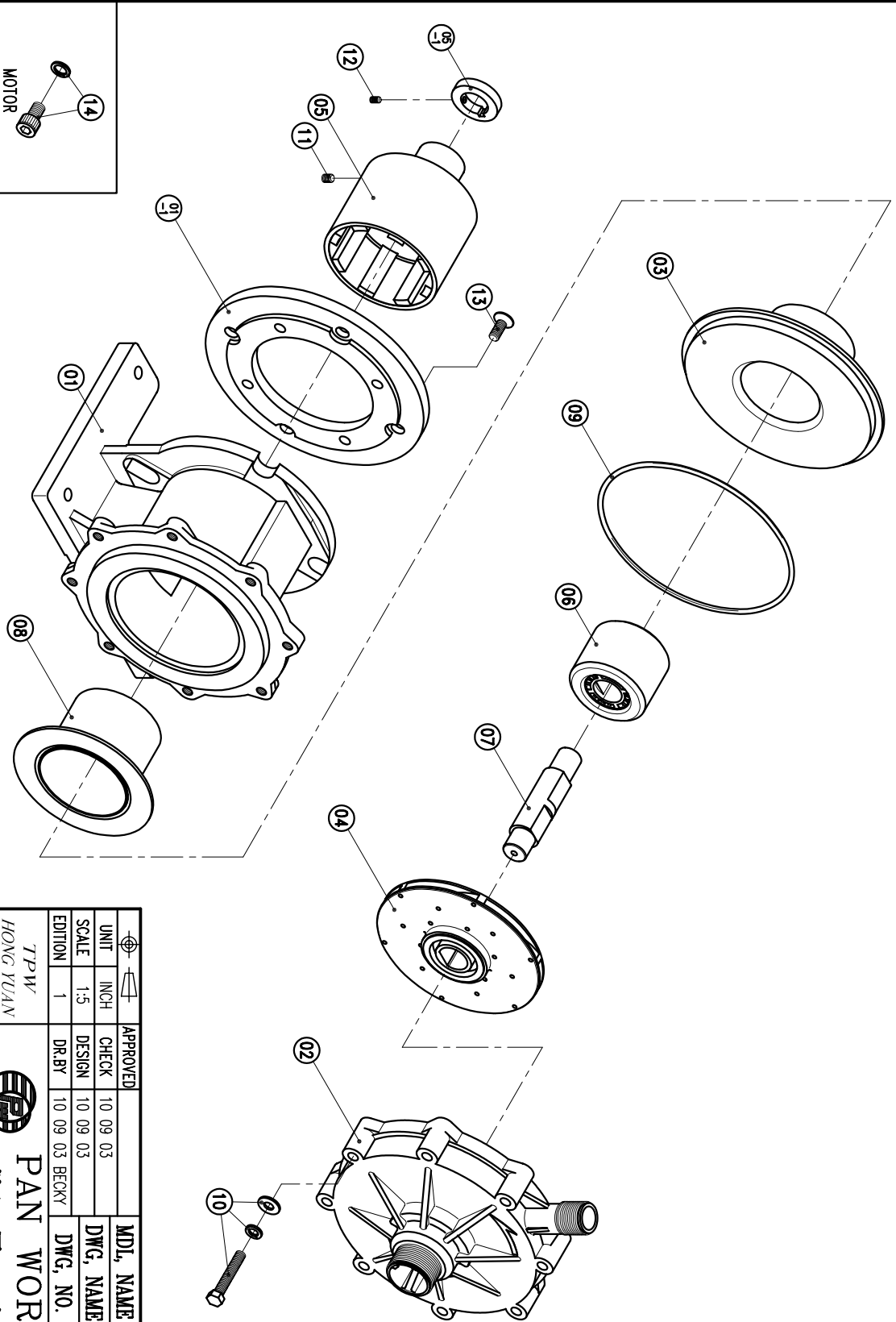


NO	PART NAME	QTY	MATERIAL	NOTE	PART. NO.	NO	PART NAME	QTY	MATERIAL	NOTE	PART. NO.
03	REAR CASING	1	PPS	CARBON SIC		09	O. RING	1	FKM	G200	
						08	REAR CASING COVER	1		φ145X88	
02	FRONT CASING	1	PPS	THRUST PAD-CERAMIC BEARING-CARBON THRUST PAD-SIC		07	SPINDLE	1	CERAMIC SIC	φ30X131	
						06	MAGNET CAPSULE	1	PPG	φ79.6X63.5	
01-1	TRANSITION FLANGE	1	FC-20	φ228.6X18		05-1	RING	1	S45C	φ48X9.8	
01	BRACKET	1	FC-20	φ226.5X151		05	DRIVE MAGNET IMPELLER ASS'Y	1	FCD-45 PPS	φ118X144 3013PH	
						04		1	PPS		
						14	HEXAGON SOCKET BOLT w/1 SPRING WASHER	4	SUS304	1/2"-13X3/4"	
						13	COUNTER SUNK HEAD BOLT	4	S435	M10X25	
						12	SET SCREW	2	S435	M6X10	
						11	SET SCREW	2	S435	M8X10	
						10	HEXAGON HEAD BOLT w/1 SPRING WASHER w/1 PLAIN WASHER	8	SUS304	M10X60	



(NEMA)

APPROVED	CHECK	10.09.03	MDL. NAME	NH-3013PH (3.7kW)
SCALE	DESIGN	10.09.03	DWG. NAME	DECOMPOSITION DRAWING
EDITION	DR. BY	10.09.03 BECKY	DWG. NO.	E3308375
				A3

TPW  
HONG YUAN



PAN WORLD CO., LTD.  
パンワールド株式会社