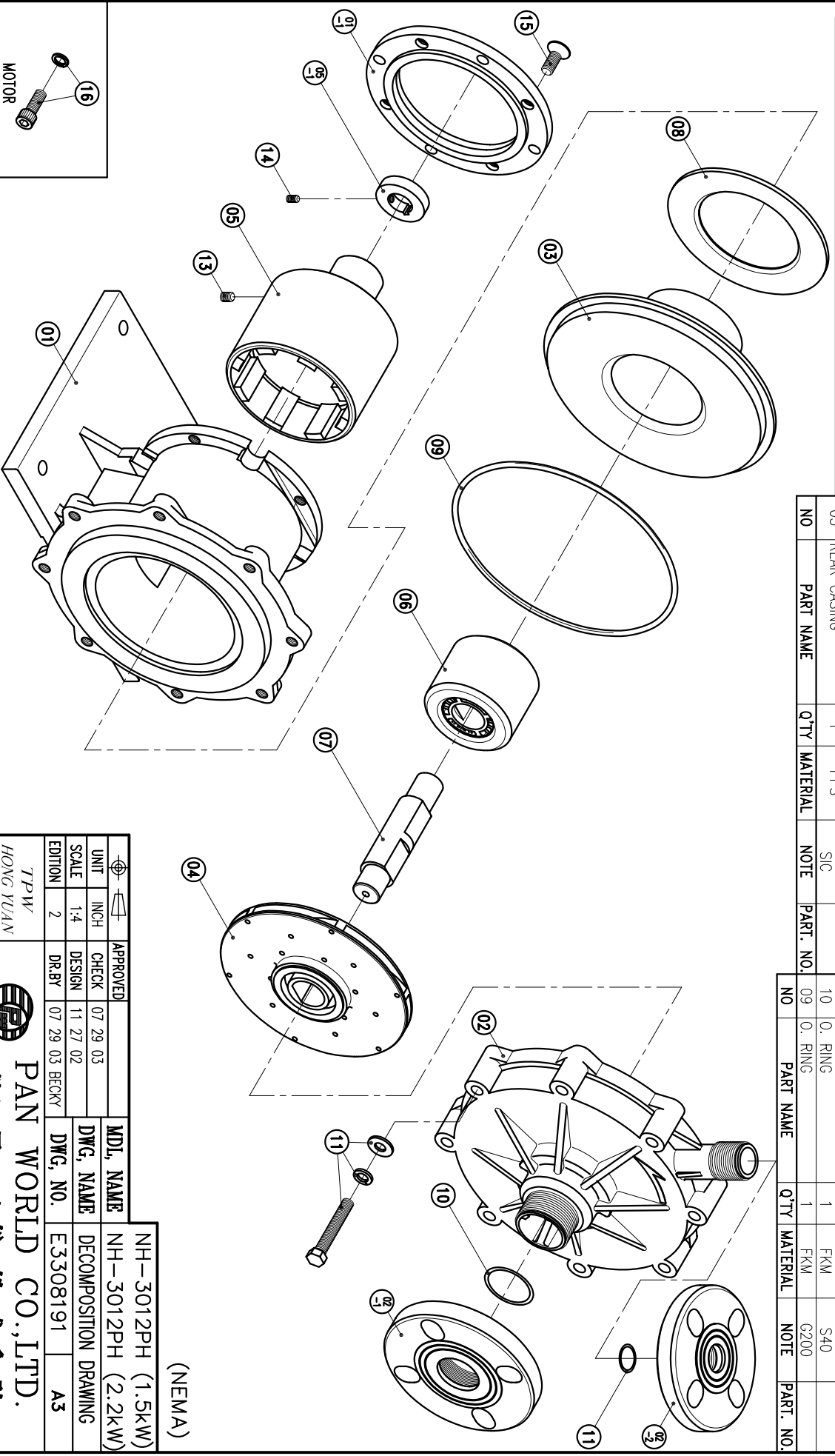


02-2	FLANGE	1	PPG	25A	1001007100
02-1	FLANGE	1	PPG	40A	
02	FRONT CASING	1	PPS	BEARING-CARBON THRUST PAD-SiC	
01-1	TRANSITION FLANGE	1	FC-20	φ165.1X14	
01	BRACKET	1	FC-20	φ226.5X140	

08	BACK UP RING	1	SUS304	φ145X4	
07	SPINDLE	1	CERAMIC	φ30X131	
06	MAGNET CAPSULE	1	PPG	φ79.6X63.5	
05-1	RING	1	S45C	φ44X10	
05	DRIVE MAGNET	1	FCD-45	φ118X133	
04	IMPELLER ASS'Y	1	PPS	3012PH	
03	REAR CASING	1	PPS	3013PH	
				CARBON	
				SiC	

16	HEXAGON SOCKET BOLT w/1 SPRING WASHER	4	SUS304	3/8"-16X1"	
15	COUNTER SUNK HEAD BOLT	4	S435	M10X20	
14	SET SCREW	2	S435	M6X10	
13	SET SCREW	2	S435	M8X10	
12	HEXAGON HEAD BOLT w/1 SPRING WASHER w/1 PLAIN WASHER	8	SUS304	M10X60	
11	O. RING	1	FKM	S24	
10	O. RING	1	FKM	S40	
09	O. RING	1	FKM	G200	



(NEMA)

UNIT	INCH	CHECK	07 29 03	MDL NAME	NH-3012PH (1.5kW)
SCALE	1-4	DESIGN	11 27 02	DWG. NAME	NH-3012PH (2.2kW)
EDITION	2	DR.BY	07 29 03 BECKY	DWG. NO.	E3308191
					A3

TPW
HONG YUAN



PAN WORLD CO., LTD.
パンワールド株式会社