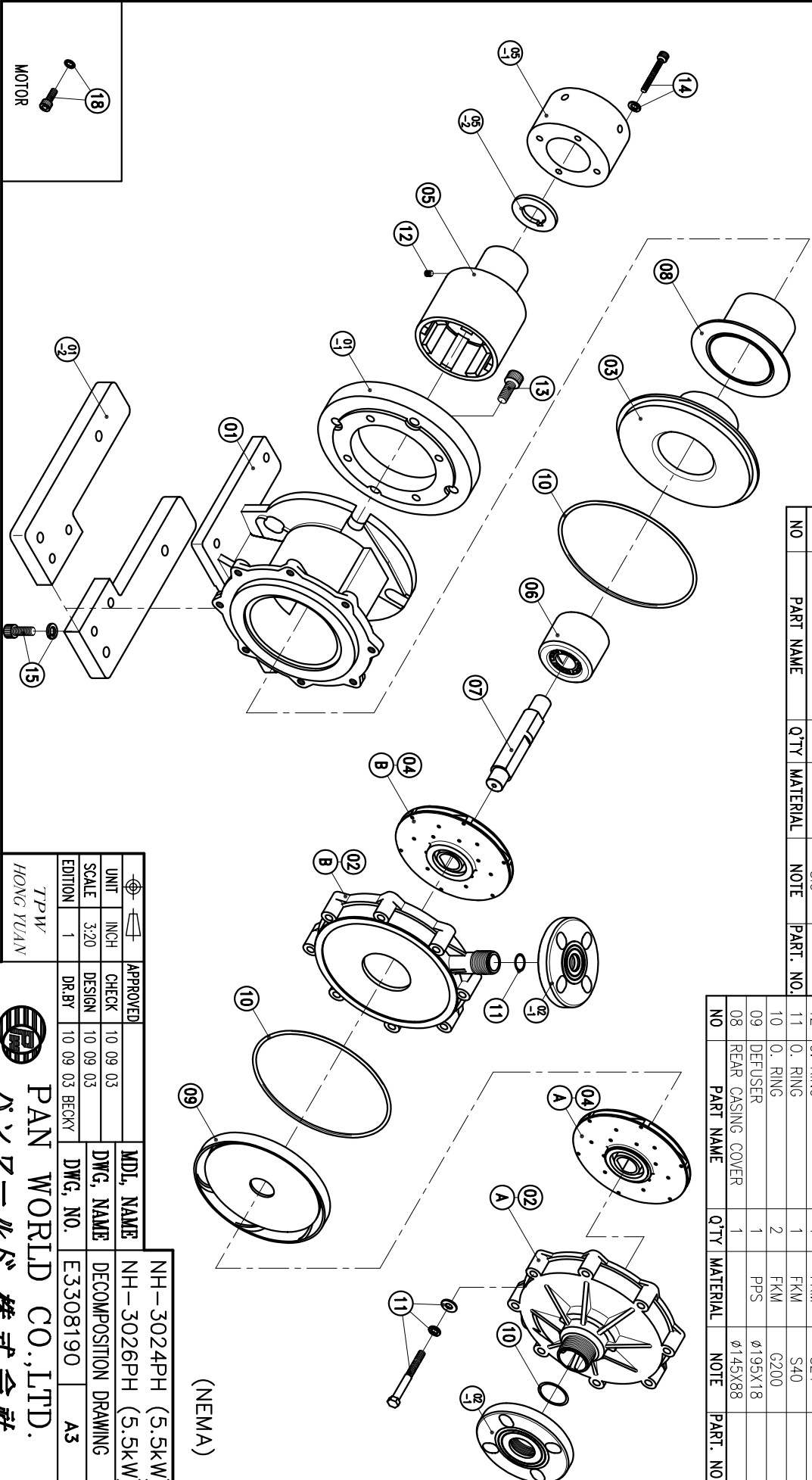


02-1	FLANGE	1	PPG	25A	1001007100	07	SPINDLE	1	CERAMIC	Ø30X164	18	HEXAGON SOCKET BOLT	4	SUS304	1/2"-13X1 1/4"		
02-B	CASING-2ND	1	PPS	Ø226.5X41		06	MAGNET CAPSULE	1	PPG	Ø79.6X63.5	17	HEXAGON SOCKET BOLT	4	SUS304	M12X30		
02-1	FLANGE	1	PPG	40A		05-2	RING	1	S45C	Ø65X5.7		w/1 SPRING WASHER					
02-A	FRONT CASING-1ST	1	PPS	THRUST PAD: CERAMIC BEARING: CARBON		05-1	FLY WHEEL	1	S45C	Ø122X68	16	HEXAGON SOCKET BOLT	4	SUS304	M8X60		
				THRUST PAD: SIC BEARING: SIC		05	DRIVE MAGNET	1	FCD-45	Ø122X165		w/1 SPRING WASHER					
01-2	FOOT	1+1	S45C	300X95		04-B	IMPELLER ASS'Y-2ND	1	PPS	3024PH 3026PH	15	HEXAGON SOCKET BOLT	4	SUS304	M10X25		
01-1	TRANSITION FLANGE	1	FC-20	Ø228.6X29.1		04-A	IMPELLER ASS'Y-1ST	1	PPS	3024PH 3026PH	14	SET SCREW	2	S435	M8X10		
01	BRACKET	1	FC-20	Ø226.5X151		03	REAR CASING	1	PPS	CARBON SIC	13	HEXAGON HEAD BOLT	8	SUS304	M10X95		
NO	PART NAME	Q'TY	MATERIAL	NOTE	PART. NO.	NO	PART NAME	Q'TY	MATERIAL	NOTE	PART. NO.	NO	PART NAME	Q'TY	MATERIAL	NOTE	PART. NO.

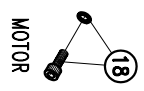
12	O. RING	1	FKM	S24		12	O. RING	1	FKM	S24	
11	O. RING	1	FKM	S40		10	O. RING	1	FKM	G200	
10	O. RING	2	FKM	G200		09	DEFUSER	1	PPS	Ø195X18	
08	REAR CASING COVER	1	PPS	Ø145X88		NO	PART NAME	Q'TY	MATERIAL	NOTE	PART. NO.



APPROVED	CHECK	10 09 03	MDL NAME	NH-3024PH (5.5KW)
DESIGN	SCALE	3:20	DWG. NAME	NH-3026PH (5.5KW)
DR.BY	EDITION	1	DWG. NO.	E3308190
10 09 03 BECKY				A3

TPW
HONG YUAN

PAN WORLD CO., LTD.
パンワールド株式会社



MOTOR