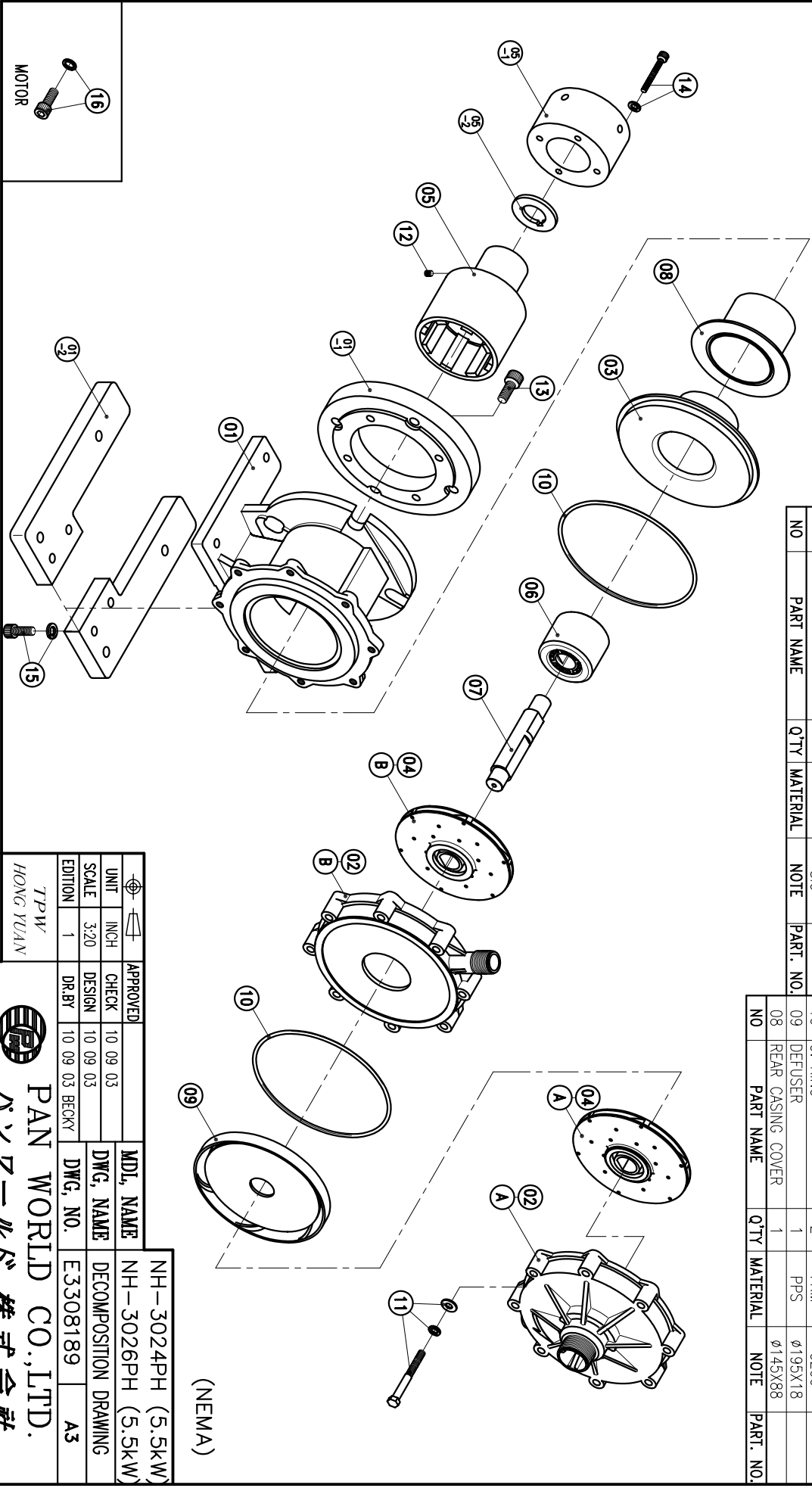


02-B	CASING-2ND	1	PPS	φ226.5X41		
			THRUST PAD: CERAMIC			
02-A	FRONT CASING-1ST	1	PPS	BEARING: CARBON		
			THRUST PAD: SIC			
01-2	FOOT	1+1	S45C	300X95		
01-1	TRANSITION FLANGE	1	FC-20	φ228.6X29.1		
01	BRACKET	1	FC-20	φ226.5X151		

07	SPINDLE	1	CERAMIC	φ30X164		
			SIC			
06	MAGNET CAPSULE	1	PPG	φ79.6X63.5		
05-2	RING	1	S45C	φ65X5.7		
05-1	FLY WHEEL	1	S45C	φ122X68		
05	DRIVE MAGNET	1	FCD-45	φ122X165		
04-B	IMPELLER ASS'Y-2ND	1	PPS	3024PH		
04-A	IMPELLER ASS'Y-1ST	1	PPS	3024PH		
			3026PH			
03	REAR CASING	1	PPS	3026PH		
			CARBON			
			SIC			

16	HEXAGON SOCKET BOLT	4	SUS304	1/2"-13X1 1/4"		
15	HEXAGON SOCKET BOLT	4	SUS304	M12X30		
14	HEXAGON SOCKET BOLT	4	SUS304	M8X60		
13	HEXAGON SOCKET BOLT	4	SUS304	M10X25		
12	SET SCREW	2	S435	M8X10		
11	HEXAGON HEAD BOLT	8	SUS304	M10X95		
10	w/1 SPRING WASHER					
09	w/1 PLAIN WASHER					
08	REAR CASING COVER	1	FKM	G200		
			PPS	φ195X18		
				φ145X88		



(NEMA)

APPROVED	10.09.03	MDL NAME	NH-3024PH (5.5KW)
CHECK	10.09.03	DWG. NAME	NH-3026PH (5.5KW)
DESIGN	10.09.03	DECOMPOSITION DRAWING	
DR.BY	10.09.03 BECKY	DWG. NO.	E3308189
EDITION	1		A3

TPW
HONG YUAN

PAN WORLD CO., LTD.
パンワールド株式会社