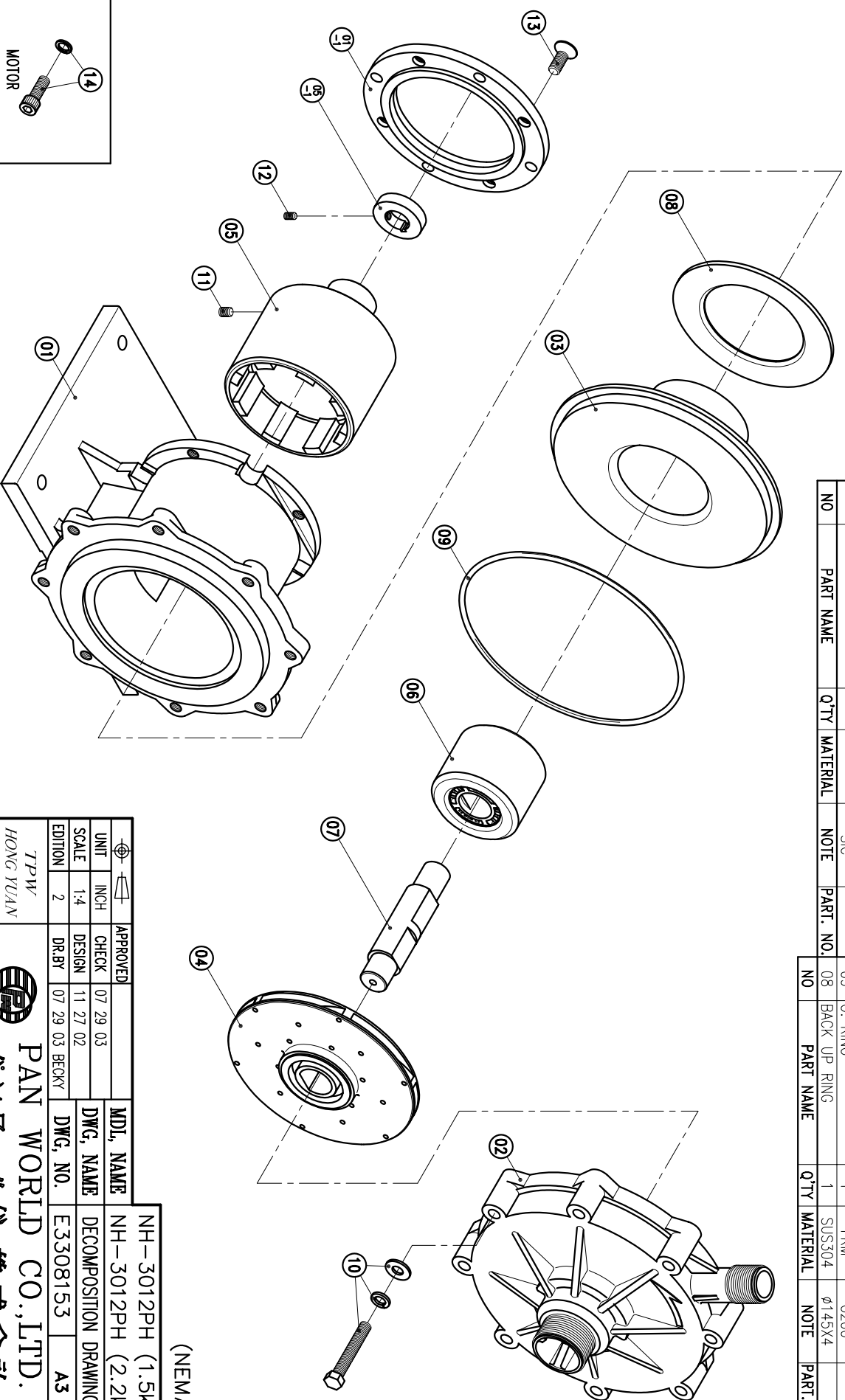


02	FRONT CASING	1	PPS	THRUST PAD: CERAMIC BEARING: CARBON THRUST PAD: SIC			
01-1	TRANSITION FLANGE	1	FC-20	BEARING: SIC	FC-20	φ165.1X14	
01	BRACKET	1	FC-20		φ226.5X140		

07	SPINDLE	1	CERAMIC		φ30X131		
06	MAGNET CAPSULE	1	PPG		φ79.6X63.5		
05-1	RING	1	S45C		φ44X10		
05	DRIVE MAGNET	1	FCD-45		φ118X133		
04	IMPELLER ASS'Y	1	PPS		3012PH 3013PH		
03	REAR CASING	1	PPS		3013PH CARBON SIC		

14	HEXAGON SOCKET BOLT w/1 SPRING WASHER	4	SUS304		3/8"-16X1"		
13	COUNTER SUNK HEAD BOLT	4	S435		M10X20		
12	SET SCREW	2	S435		M6X10		
11	SET SCREW	2	S435		M8X10		
10	HEXAGON HEAD BOLT w/1 SPRING WASHER	8	SUS304		M10X60		
09	O. RING	1	FKM		G200		
08	BACK UP RING	1	SUS304		φ145X4		



APPROVED	07 29 03	MDL NAME	NH-3012PH (1.5kW)
CHECK	11 27 02	DWG. NAME	NH-3012PH (2.2kW)
DESIGN	07 29 03	DECOMPOSITION DRAWING	
DR.BY	07 29 03	DWG. NO.	E3308153
EDITION	2		A3

TPW  
HONG YUAN



PAN WORLD CO., LTD.  
パンワールド株式会社

(NEMA)