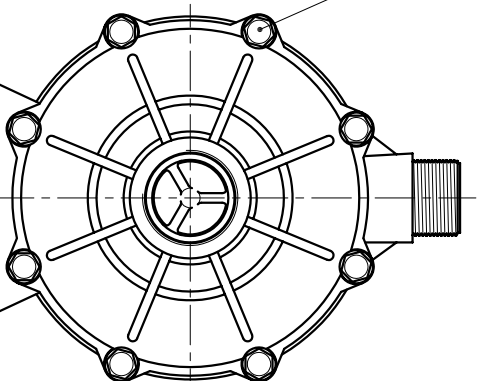
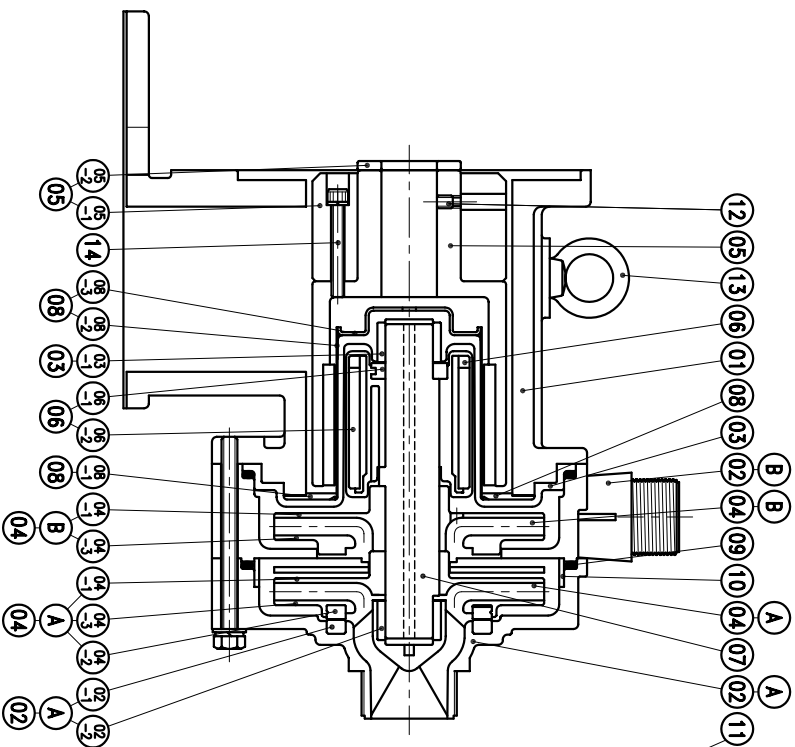


04-2	MOUTH RING	1	RULON	φ104X9	A2428549	07	SPINDLE	1	CERAMIC	φ38X198	A2338480	15	HEXAGON SOCKET BOLT	4	SUS304	1/2"-13X1 1/4"	
04-1	IMPELLER-1ST	1	PPS	φ170X41	A2418462	06-2	DRIVEN MAGNET	1	SIC	φ76X86	A2448506	14	HEXAGON SOCKET BOLT	4	SUS304	M8X60	
04-A	IMPELLER ASS'Y-1ST	1	PPS	4024PH 4026PH	A2408491	06-1	REAR THRUST PAD	1	Nd-Fe-B CERAMIC	φ48X10	A2328512	13	EBEBOLT	1	S41C	M12X20	
03-1	BEARING	1	CARBON	φ40X25	A2228423	06	MAGNET CAPSULE	1	PGC	φ79.6X92	A2438472	12	SET SCREW	2	S435	M8X10	
03	REAR CASING	1	PPS	φ210X123.5	A2308476	05-2	RING	1	S45C	φ65X5.7	P2574346	11	HEXAGON HEAD BOLT	8	SUS304	M10X120	
02-B	CASING-2ND	1	PPS	φ226.5X59.5	A2208490	05-1	FLY WHEEL	1	S45C	φ122X68	A2538511	10	O. RING	2	FKM	φ199.3Xφ5.7	
02-2	BEARING	1	CARBON	φ40X25	A2228423	05	DRIVE MAGNET	1	FCD-45	φ122X199	A2508564	09	DEFUSER	1	PPS	φ195X18	
02-1	FRONT THRUST PAD	1	CERAMIC	φ104X9	P2224475	04-3	SHLOUD-2ND	1	PPS	φ170X12	A2458492	08-3	COVER	1	SUS304	φ90.2X17.5	
02-A	FRONT CASING-1ST	1	PPS	φ226.5X101	A2208489	04-1	IMPELLER-2ND	1	PPS	φ170X41	A2418462	08-2	PIPE	1	HASTELLOY C	φ91.4X112	
01	BRACKET	1	FC-20	φ226.5X205	A2128563	04-3	SHLOUD-1ST	1	PPS	φ170X12	A2458481	08-1	BACK UP RING	1	SUS304	φ158X4	
NO	PART NAME	Q'TY	MATERIAL	NOTE	DWG. NO.	NO	PART NAME	Q'TY	MATERIAL	NOTE	DWG. NO.	NO	PART NAME	Q'TY	MATERIAL	NOTE	DWG. NO.
08	REAR CASING COVER	1	08-1,-2,-3	φ158X121	A2118477	08	REAR CASING COVER	1	08-1,-2,-3	φ158X121	A2118477	08	REAR CASING COVER	1	08-1,-2,-3	φ158X121	A2118477



(NEMA)

UNIT	INCH	CHECK	09 27 03	MDL NAME	NH-4024PH (7.5KW)
SCALE	3:10	DESIGN	11 27 02	DWG. NAME	NH-4026PH (7.5KW)
EDITION	1	DR.BY	09 27 03 BECKY	DWG. NO.	E2408161
					A3

TPW
HONG YUAN



PAN WORLD CO., LTD.
パンワールド株式会社