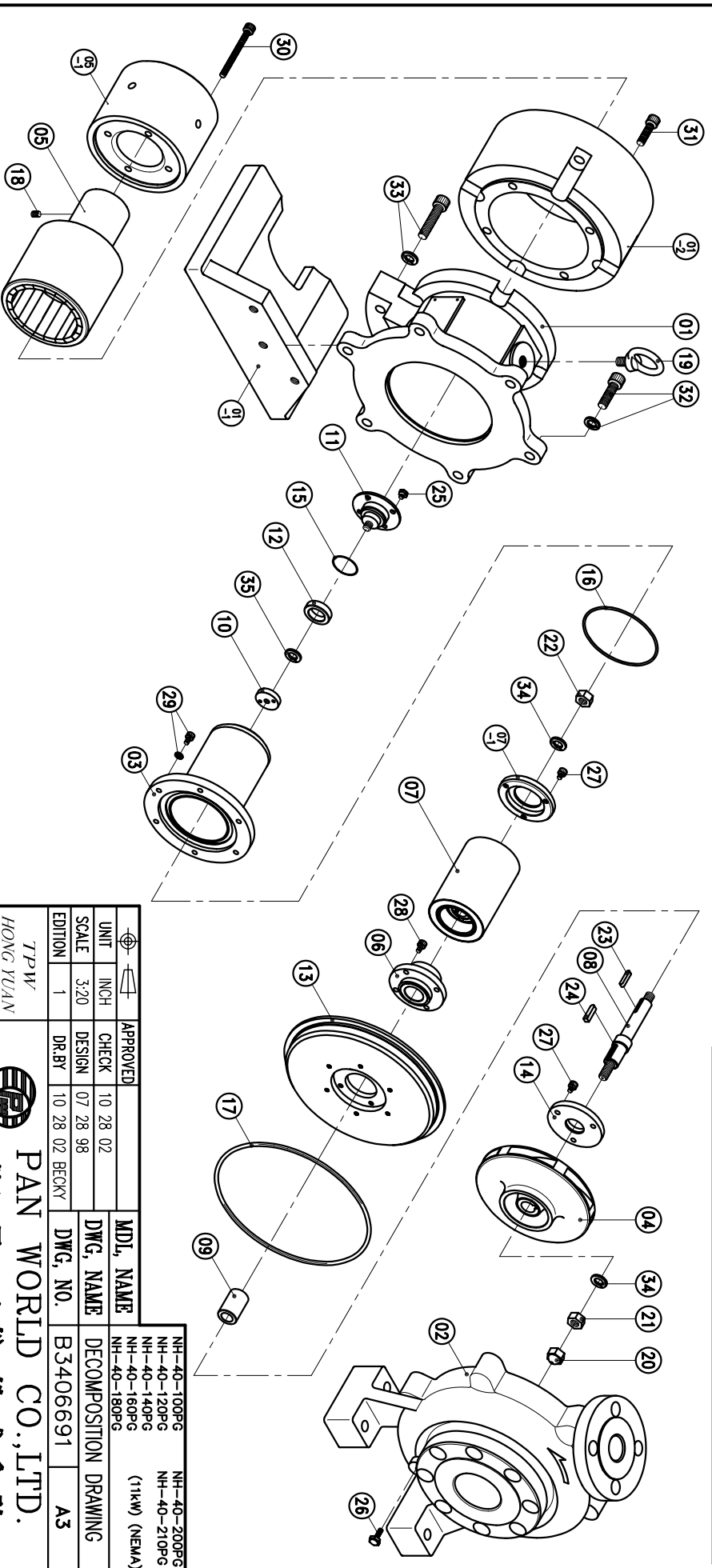


NO	PART NAME	Q'TY	MATERIAL	NOTE	PART NO.	NO	PART NAME	Q'TY	MATERIAL	NOTE	PART NO.	
07	INNER DRIVE RING	1		φ77.2X11.3	6573510123	22	IMPELLER NUT	1	SUS316	M12(L)	6573510158	
06	BEARING ASS'Y	1	SIC	φ76X42	6573510117	21	IMPELLER NUT	1	SUS316	M12(R)	6573510157	
05-1	FLY WHEEL	1	S45C	φ139X96.6	6573510136	20	IMPELLER NUT	1	SUS316	M12		
05	OUTER DRIVE RING	1	FCD-45	φ122X232.6	6573510132	19	EYE BOLT	1	S41C	M12X20		
04	IMPELLER	1	SUS316	100PG:φ100	6574510106	18	SET SCREW	2	S435	M8X10		
				120PG:φ120	6574510107	17	O. RING	1	FKM	G210	6573510102	
				140PG:φ140	6574510108	16	O. RING	1	FKM	G100	6573510138	
				160PG:φ160	6574510109	15	O. RING	1	FKM	G35	6573510142	
				180PG:φ180	6574510110	14	THRUST PAD ASS'Y	1	SIC	φ76X9	6573510113	
				200PG:φ200	6574510111	13	CENTER PLATE	1	SUS316	φ225X22	6573510160	
03	REAR CASING	1		φ150X140	6573510105	11	REAR SLEEVE HOLDER	1	SUS316	φ66X34.5		
02	FRONT CASING	1	SUS316	ANSI 300lbs	6574510100	10	FIXING PLATE	1	SUS316	φ32X8	6573510159	
01-2	TRANSITION FLANGE	1	S45C	φ228.6X105.6		09	SLEEVE	1	SIC	φ6X40	6573510125	
01-1	FOOT	1	FCD-45	280X195	6573510156	08	SPINDLE	1	SUS316	φ22X152	6573510127	
01	BRACKET	1	FC-20	φ270X144	6573510154	07-1	REAR BEARING COVER	1	SUS316	φ77X10.5		
35	SPRING WASHER	1	SUS316			27	HEXAGON SOCKET BOLT	4	SUS316	M6X10		
34	SPRING WASHER	2	SUS316			28	HEXAGON SOCKET BOLT	6	SUS316	M6X8		
33	HEXAGON SOCKET BOLT	3	SUS304	M12X45		26	HEXAGON HEAD BOLT	1	SUS316	1/4"-20X3/4"		
	w/t SPRING WASHER					25	HEXAGON HEAD BOLT	4	SUS304	M6X6		
32	HEXAGON SOCKET BOLT	6	SUS304	M12X40		24	KEY	1	SUS316	6X6X25		
	w/t SPRING WASHER					23	KEY	1	SUS316	5X5X20		
31	HEXAGON SOCKET BOLT	4	SUS304	M10X35		22	HEXAGON SOCKET BOLT	6	SUS316	M6X12		
30	HEXAGON SOCKET BOLT	3	SUS304	M8X70		21	HEXAGON SOCKET BOLT	4	SUS316	M6X10		
	w/t SPRING WASHER					20	HEXAGON SOCKET BOLT	6	SUS316	M6X8		
29	HEXAGON SOCKET BOLT	6	SUS304	M6X12		19	HEXAGON SOCKET BOLT	4	SUS316	M6X10		
	w/t SPRING WASHER					18	HEXAGON SOCKET BOLT	6	SUS316	M6X8		
28	HEXAGON SOCKET BOLT	4	SUS316	M6X10		17	HEXAGON SOCKET BOLT	6	SUS316	M6X12		
27	HEXAGON SOCKET BOLT	6	SUS316	M6X8		16	HEXAGON SOCKET BOLT	4	SUS316	M6X10		
26	HEXAGON HEAD BOLT	1	SUS316	1/4"-20X3/4"		15	HEXAGON SOCKET BOLT	6	SUS316	M6X12		
25	HEXAGON HEAD BOLT	4	SUS304	M6X6		14	HEXAGON SOCKET BOLT	4	SUS316	M6X10		
24	KEY	1	SUS316	6X6X25		13	HEXAGON SOCKET BOLT	6	SUS316	M6X12		
23	KEY	1	SUS316	5X5X20		12	HEXAGON SOCKET BOLT	4	SUS316	M6X10		



UNIT	INCH	CHECK	10 28 02	MDL NAME	NH-40-100PG	NH-40-200PG
SCALE	3:20	DESIGN	07 28 98	DWG. NAME	NH-40-120PG	NH-40-210PG
EDITION	1	DR.BY	10 28 02 BECKY	DWG. NO.	NH-40-140PG	NH-40-180PG
					NH-40-160PG	(11kw) (NEMA)
					NH-40-180PG	
					B3406691	A3

TPW
HONG YUAN

PAN WORLD CO.,LTD.
パンワールド株式会社