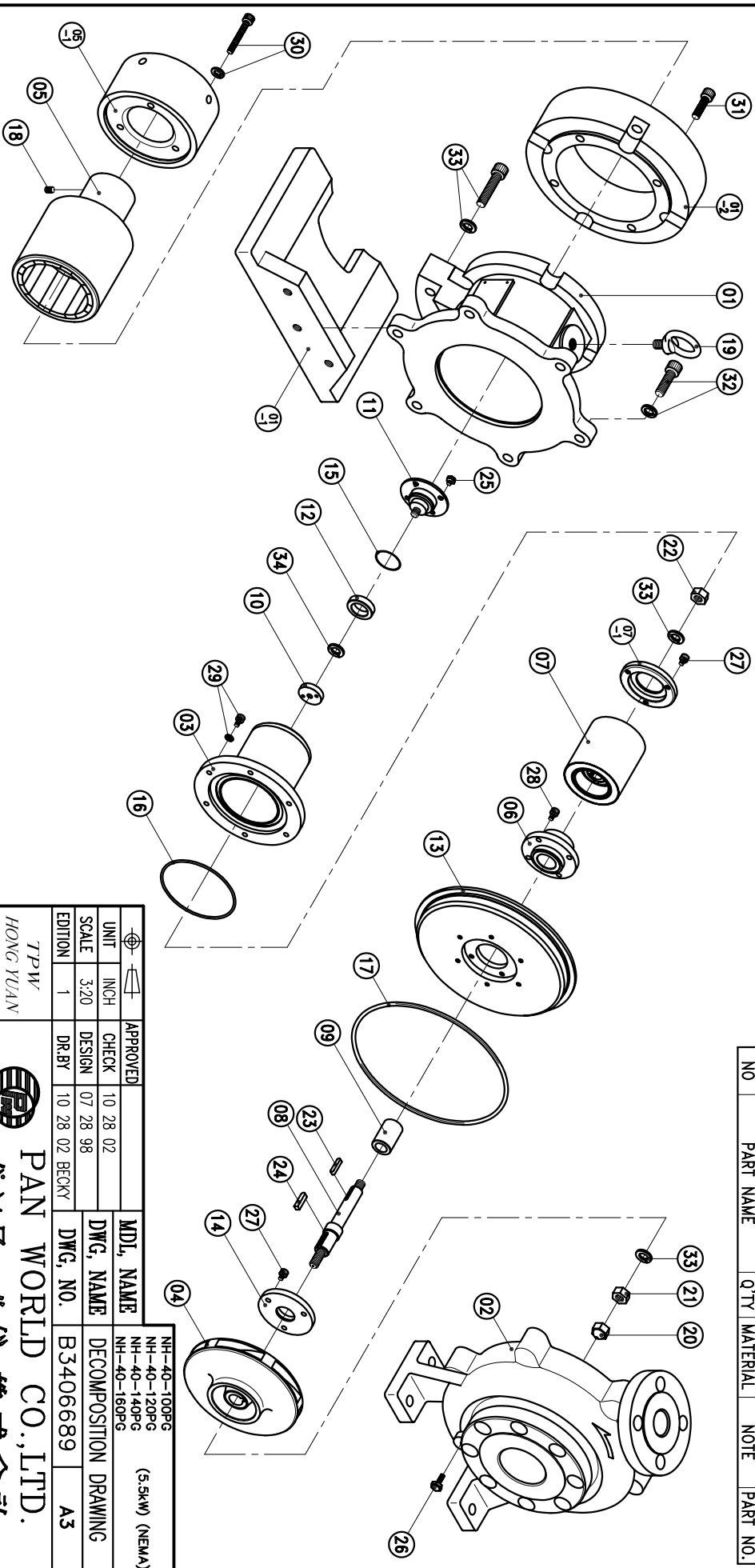


08	SPINDLE	1	SUS316	φ22X152	6573510127	23	KEY	1	SUS316	5X5X20	35	SPRING WASHER	1	SUS316	M10		
07-1	REAR BEARING COVER	1	SUS316	φ77X10.5		22	IMPELLER NUT	1	SUS316	M12(L)	34	SPRING WASHER	2	SUS316	M12		
07	INNER DRIVE RING	1		φ77.2X82.5	6573510121	21	IMPELLER NUT	1	SUS316	M12(R)	33	HEXAGON SOCKET BOLT	3	SUS304	M12X45		
06	BEARING ASS'Y	1	SIC	φ76X42	6573510117	20	IMPELLER NUT	1	SUS316	M12		w/1 SPRING WASHER					
05-1	FLY WHEEL	1	S45C	φ139X75	6573510135	19	EYE BOLT	1	S41C	M12X20	32	HEXAGON SOCKET BOLT	6	SUS304	M12X40		
05	OUTER DRIVE RING	1	FCD-45	φ122X187	6573510130	18	SET SCREW	2	S435	M8X10		w/1 SPRING WASHER					
04	IMPELLER	1	SUS316			17	O. RING	1	FKM	G210	31	HEXAGON SOCKET BOLT	4	SUS316	M10X35		
						16	O. RING	1	FKM	G100	30	HEXAGON SOCKET BOLT	3	SUS304	M8X60		
						15	O. RING	1	FKM	G35	29	w/1 SPRING WASHER					
						14	THRUST PAD ASS'Y	1	SIC	φ76X9	28	HEXAGON SOCKET BOLT	6	SUS316	M6X10		
03	REAR CASING	1	SUS316	ANSI 3001b6	6574510109	13	CENTER PLATE	1	SUS316	φ225X22	27	HEXAGON SOCKET BOLT	6	SUS316	M6X8		
02	FRONT CASING	1	SUS316	φ150X110	6573510105	12	REAR SLEEVE	1	SIC	φ35X10	26	HEXAGON HEAD BOLT	1	SUS316	1/4"-20X3/4"		
01-1	FOOT	1	FCD-45	280X195	6573510156	11	REAR SLEEVE HOLDER	1	SUS316	φ66X34.5	25	HEXAGON HEAD BOLT	4	SUS304	M6X6		
01	BRACKET	1	FC-20	φ270X144	6573510151	10	FIXING PLATE	1	SUS316	φ76X40	24	HEXAGON HEAD BOLT	1	SUS316	6X6X25		
NO	PART NAME	Q'TY	MATERIAL	NOTE	PART NO.	NO	PART NAME	Q'TY	MATERIAL	NOTE	PART NO.	NO	PART NAME	Q'TY	MATERIAL	NOTE	PART NO.



APPROVED	CHECK	10 28 02	MDL NAME	NH-40-120PG (S.SkW) (NEMA)
DESIGN	07 28 98		DWG. NAME	NH-40-140PG
DR.BY	10 28 02 BECKY		DWG. NO.	B3406689
EDITION	1		DECOMPOSITION DRAWING	A3

TPW
HONG YUAN



PAN WORLD CO., LTD.
パンワールド株式会社