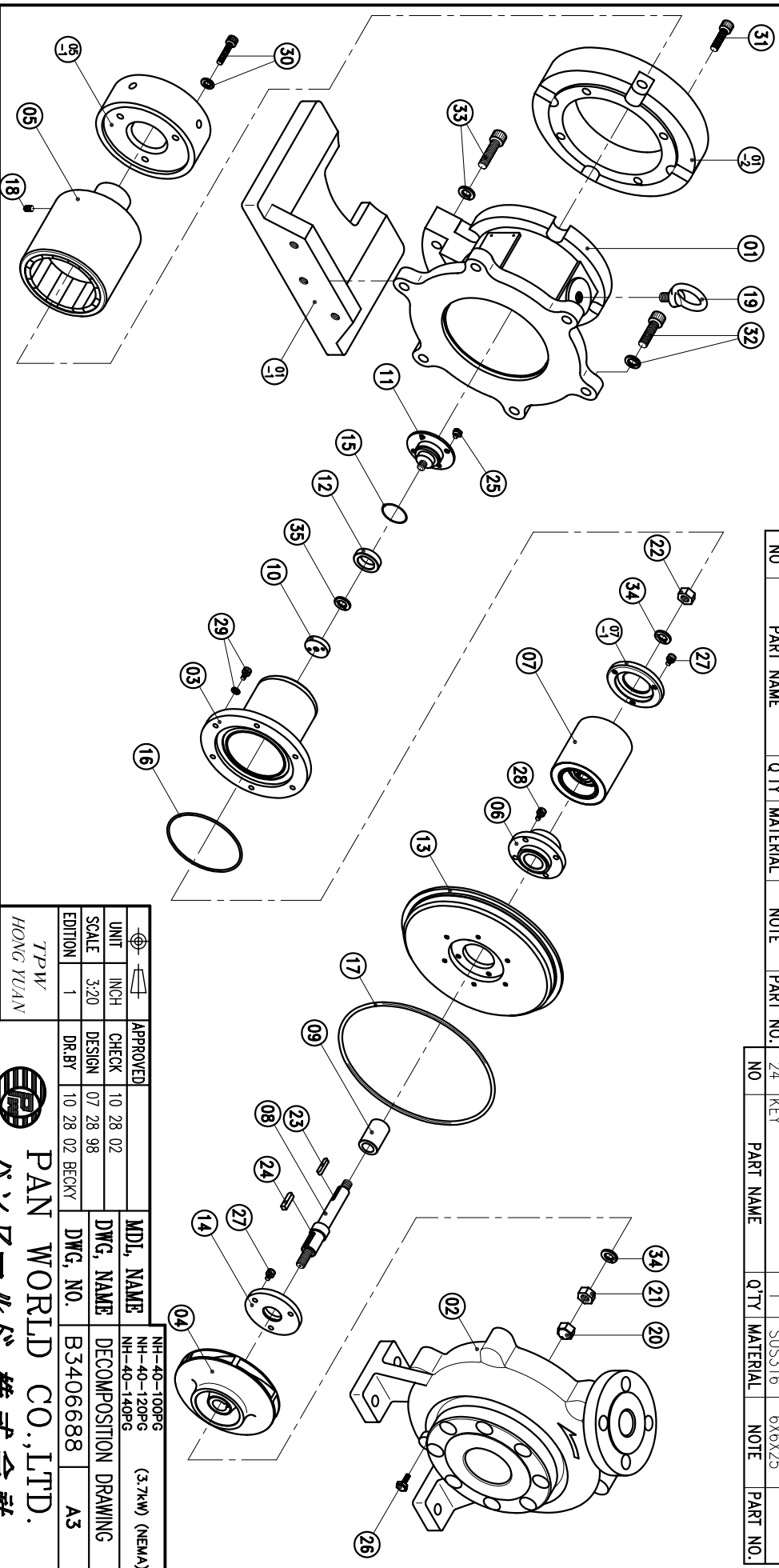


08	SPINDLE	1	SUS316	φ22X152	6573510127	23	KEY	1	SUS316	5X5X20	35	SPRING WASHER	1	SUS316	M10		
07-1	REAR BEARING COVER	1	SUS316	φ77X10.5		22	IMPELLER NUT	1	SUS316	M12(L)	34	SPRING WASHER	2	SUS316	M12		
07	INNER DRIVE RING	1	SUS316	φ77.2X82.5	6573510120	21	IMPELLER NUT	1	SUS316	M12(R)	33	HEXAGON SOCKET BOLT	3	SUS304	M12X45		
06	BEARING ASS'Y	1	SIC	φ76X42	6573510117	20	IMPELLER NUT	1	SUS316	M12		w/t SPRING WASHER					
05-1	FLY WHEEL	1	S45C	φ139X55	6573510134	19	EYE BOLT	1	S41C	M12X20	32	HEXAGON SOCKET BOLT	6	SUS304	M12X40		
05	OUTER DRIVE RING	1	FCD-45	φ122X172	6573510129	18	SET SCREW	2	S435	M8X10		w/t SPRING WASHER					
04	IMPELLER	1	SUS316	100PG:φ100 120PG:φ120 140PG:φ140	6574510107 6574510106 6574510108	17	O. RING	1	FKM	G210	31	HEXAGON SOCKET BOLT	4	SUS304	M10X35		
03	REAR CASING	1		φ150X110	6573510105	16	O. RING	1	FKM	G100	30	HEXAGON SOCKET BOLT	3	SUS304	M8X40		
02	FRONT CASING	1	SUS316	ANSI 300lb#	6574510100	15	O. RING	1	FKM	G35	29	HEXAGON SOCKET BOLT	6	SUS304	M6X12		
01-2	TRANSITION FLANGE	1	S45C	φ228.6X47		14	THRUST PAD ASS'Y	1	SIC	φ76X9	28	HEXAGON SOCKET BOLT	4	SUS316	M6X10		
01-1	FOOT	1	FCD-45	280X195	6573510156	13	CENTER PLATE	1	SUS316	φ225X22	27	HEXAGON SOCKET BOLT	6	SUS316	M6X8		
01	BRACKET	1	FC-20	φ270X144	6573510150	12	REAR SLEEVE	1	SIC	φ35X10	26	HEXAGON HEAD BOLT	1	SUS316	1/4"-20X3/4"		
NO	PART NAME	Q'TY	MATERIAL	NOTE	PART NO.	NO	PART NAME	Q'TY	MATERIAL	NOTE	PART NO.	NO	PART NAME	Q'TY	MATERIAL	NOTE	PART NO.
						09	SLEEVE	1	SIC	φ26X40	25	HEXAGON HEAD BOLT	4	SUS304	M6X6		
											24	KEY	1	SUS316	6X6X25		



⌀	≡	APPROVED	MDL. NAME	NH-40-100PG (3.7kW) (NEMA)
UNIT	INCH	CHECK	10 28 02	NH-40-120PG
SCALE	3:20	DESIGN	07 28 98	NH-40-140PG
EDITION	1	DR.BY	10 28 02 BECKY	
		DWG. NO.	B3406688	
				DECOMPOSITION DRAWING
				A3

TPW
HONG YUAN



PAN WORLD CO., LTD.
パンワールド株式会社